


# Wilgex<sup>®</sup>

Professional LED Light Manufacturer  
Since 2008

 [www.wilgex-led.com](http://www.wilgex-led.com)

 (86) 769-28820681

 [info@wilgex-led.com](mailto:info@wilgex-led.com)

**LIGHT LED STRIP**

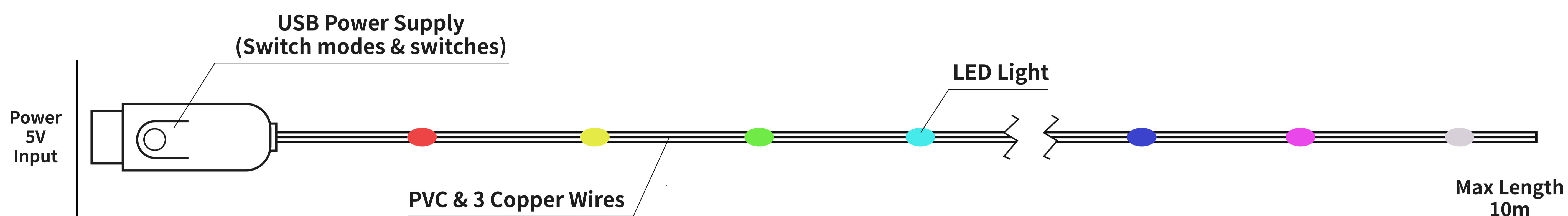
**DYNAMIC PIXEL  
RGB COLOR  
5V**

## LED FLEX RIBBON LIGHT

SKU:WJ-PSL-10M-RGB-D-5V



### Structural Drawing

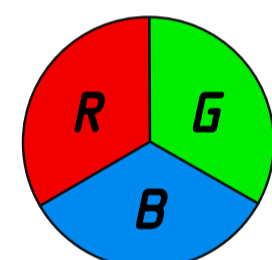


### Certifications



### Technical Data

SPI-RGB



<b>Lighting Color</b>	Dream Chasing Color	<b>Voltage</b>	5V DC
<b>Pitch Between Each Led</b>	10CM (2cm 15cm 100cm options)	<b>Max Loading</b>	10m
<b>LED Quantity(m)</b>	10 leds/Meter	<b>Controller</b>	Mini Blue Tooth Controller With USB Port + Remote

### Optical Parameter Chart for Integrating Sphere Testing

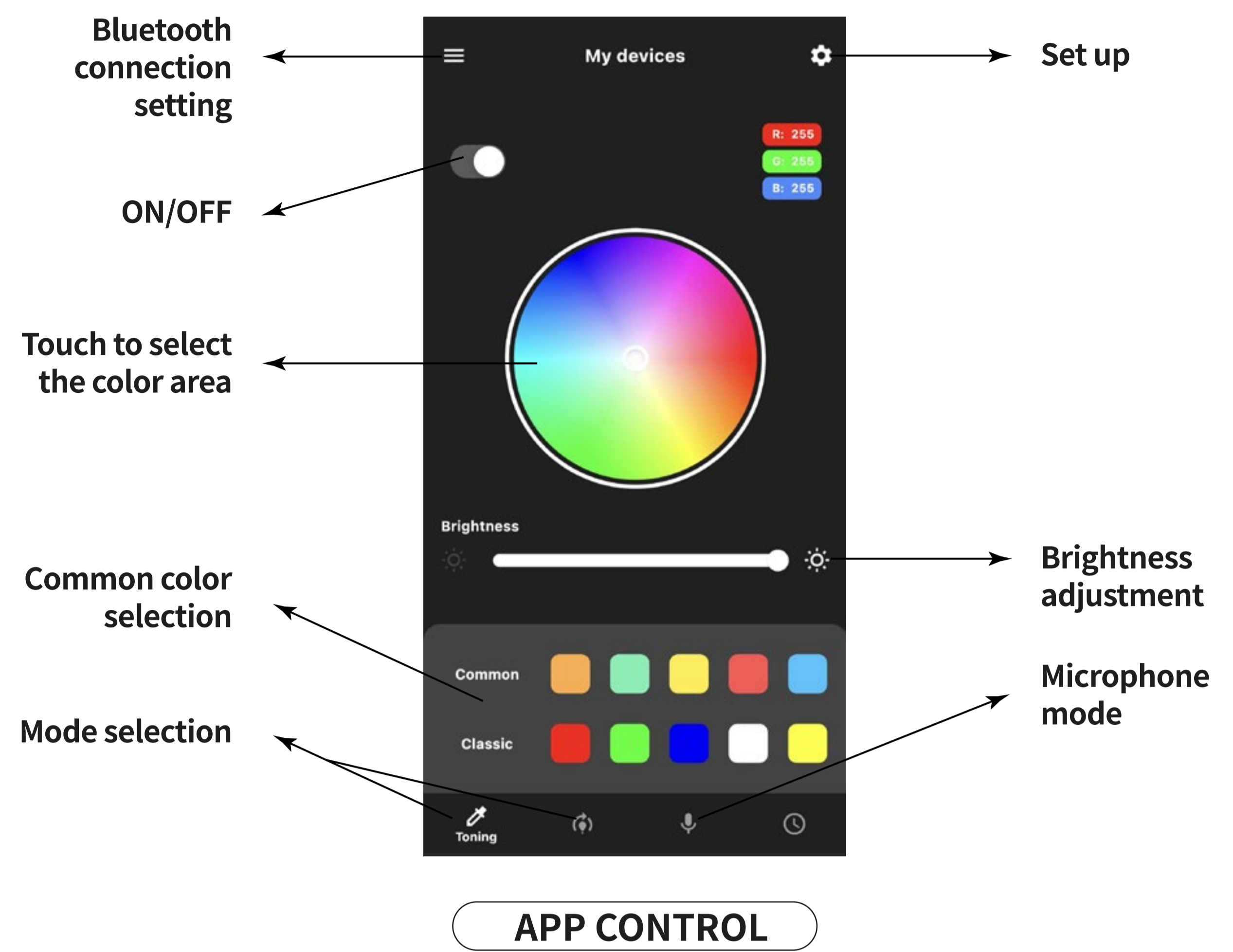
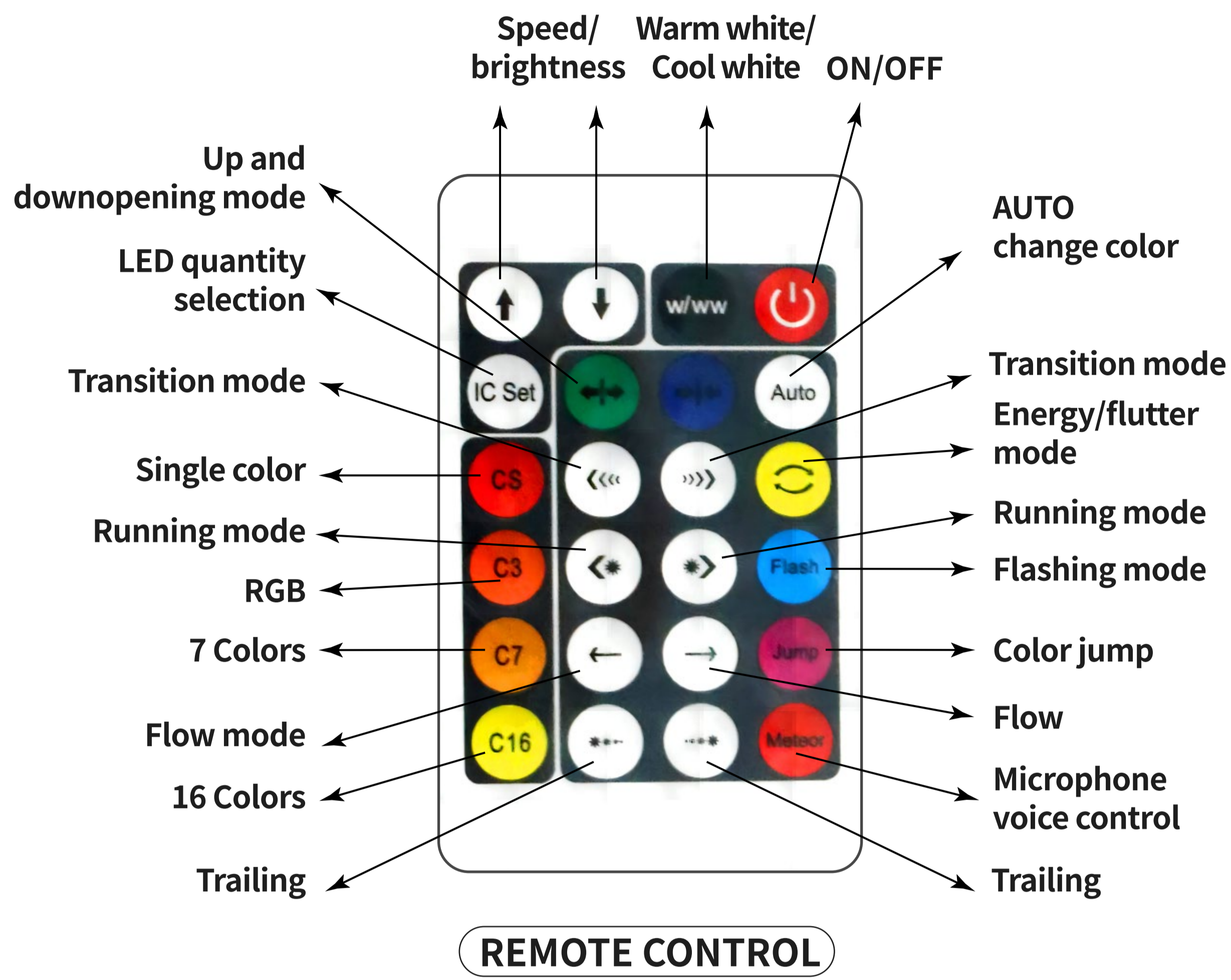
### Reliability test

TEST CATEGORY	TEST ITEMS	STANDARD/VALUE
Optical Test	Spectrum Analysis	IES LM 79(CCT, lumen, CRI, SDCM, XY, wavelength)
	Photometric Distribution	IES LM 79(lumen intensity distribution & Lux diagram)
Temperature Test	Lumen Maintenance & Lifetime	IES LM84 & IES TM 28
	Nomal Temperature Test -25°C	UL 1598 & UL2388 & IEC60598-1 & IEC60598-2-21
Physics Test	Abnormal Operation Test -70°C	UL 1598 & UL2388 & IEC60598-1 & IEC60598-2-21
	Bending Test	Manufacturer-defined, 1000 cycles
	Swing Test	UL2388, >750 cycles
	Tensile Test	Manufacturer-defined, >the weight of light in max. running length by double ends feed
	Twist Test	Manufacturer-defined, 200 cycles
	IK08	IEC62262
Weathering Test	Ball Impact	UL 1598 & UL2388 & IEC60598-1 & IEC60598-2-21
	Swimming Pool Water Immersion Test	GB9667, PH6.8-7.6, free chlorine 0.3-0.6mg/L
	Sea Water Immersion Test	IEC 60598-1, Salinity 4%
	Salt Spray Test	IEC68-2-11
Environment Test	Outdoor Exposure	Manufacturer-defined
	Flame Resistant Test	UL94
	UV Exposure Test	ASTMG154, UVA@340nm
	IPX5 IPX6 IPX7 IPX8	IEC60529
	Temperature Shock Test	Manufacturer-defined, -40°C-60°C(typical temperature range)
Constant Temperature Test	Manufacturer-defined, 70°C(typical temperature range)	

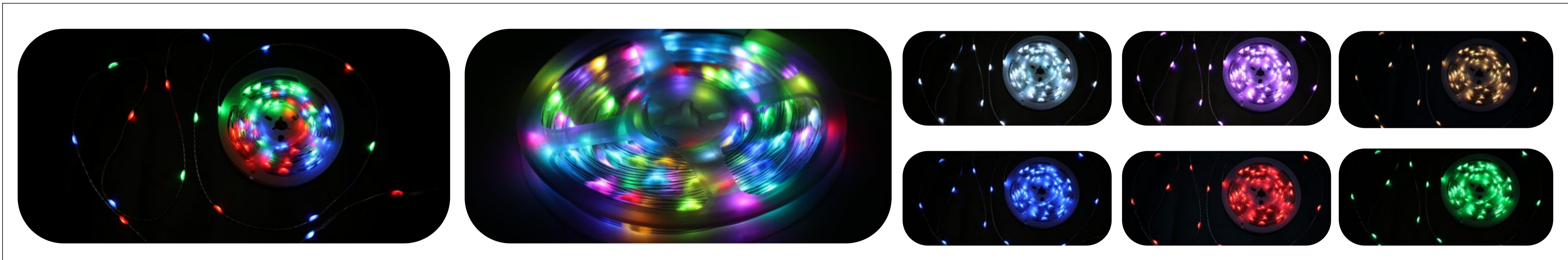
Wilgex specializes in engineering LED flexible neon lights and offers both standard and customized services. If you have specific requirements, please contact our sales department.

**Three Control Mode:**

1. Button on the LED Strip: press once to switch a luminous mode, and press for 3 seconds to turn it on or off.
  2. Remote control: use the infrared remote control to press the required function key to control the LED Strip.
  3. App control: after downloading the App from the mobile phone, turn on the Bluetooth function of the mobile phone and turn on miracles star .0/ 1 in the upper left corner is the Bluetooth connection, 0 is not connected and can be connected manually. 1 is already connected. The hexagonal symbol in the upper right corner is the debugging color sequence, usually RGB.
- If the color controlled is different from the actual, you can change other sequences. In the mode interface: there are dozens of luminous colors and dynamics for you to choose from, and the speed and brightness can also be adjusted. In microphone mode: you can change color according to the rhythm of ambient sound, and also select different modes and sensitivity.



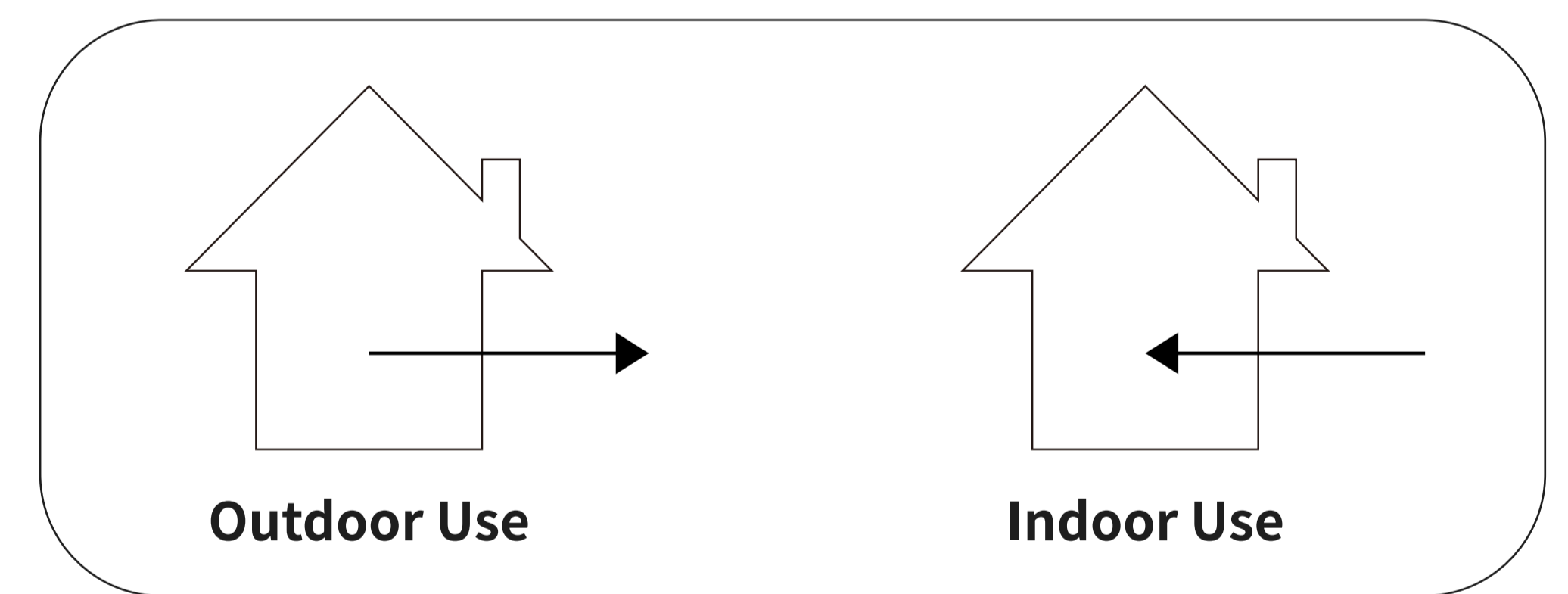
**Wide Color Options**



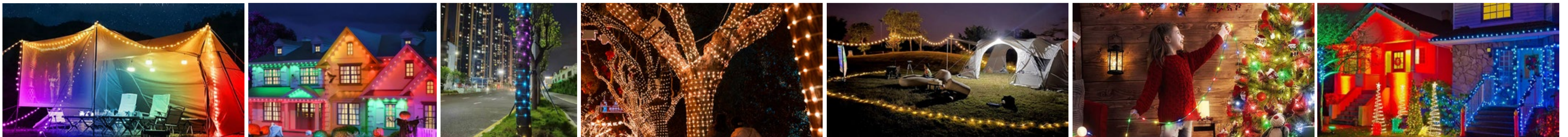
Dynamic Pixel RGB

**Recommended Usage Scenarios :**

1. Indoor and outdoor architectural lighting decoration
2. Landscape lighting
3. Advertising signage lighting
4. Stage and theater lighting
5. Car and motorcycle lighting
6. Holiday and event lighting decoration
7. Cove lighting
8. Edge-lit lighting
9. Retail and display lighting
10. Restaurant and bar lighting



Please note that these are only recommended usage scenarios and it is important to consult the product specifications and guidelines before using flexible light LED strips in any application.



**Package**



Packing Method : Blister + cardboard  
Quantity / Box : 10m/ reel