

Wilgex[®]

Professional LED Light Manufacturer
Since 2008

www.wilgex-led.com

(86) 769-28820681

info@wilgex-led.com

LED NEON FLEX

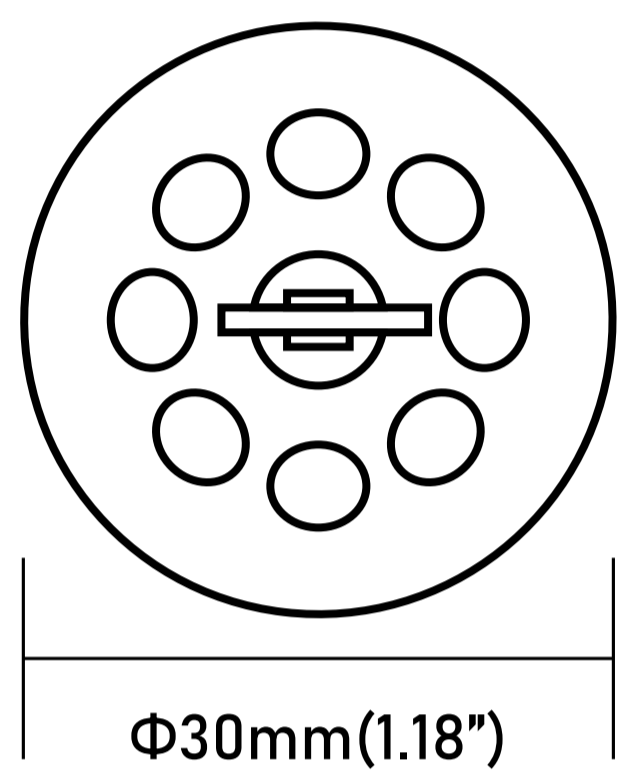
Dia 30mm ROUND

MONO COLOR 12/24V

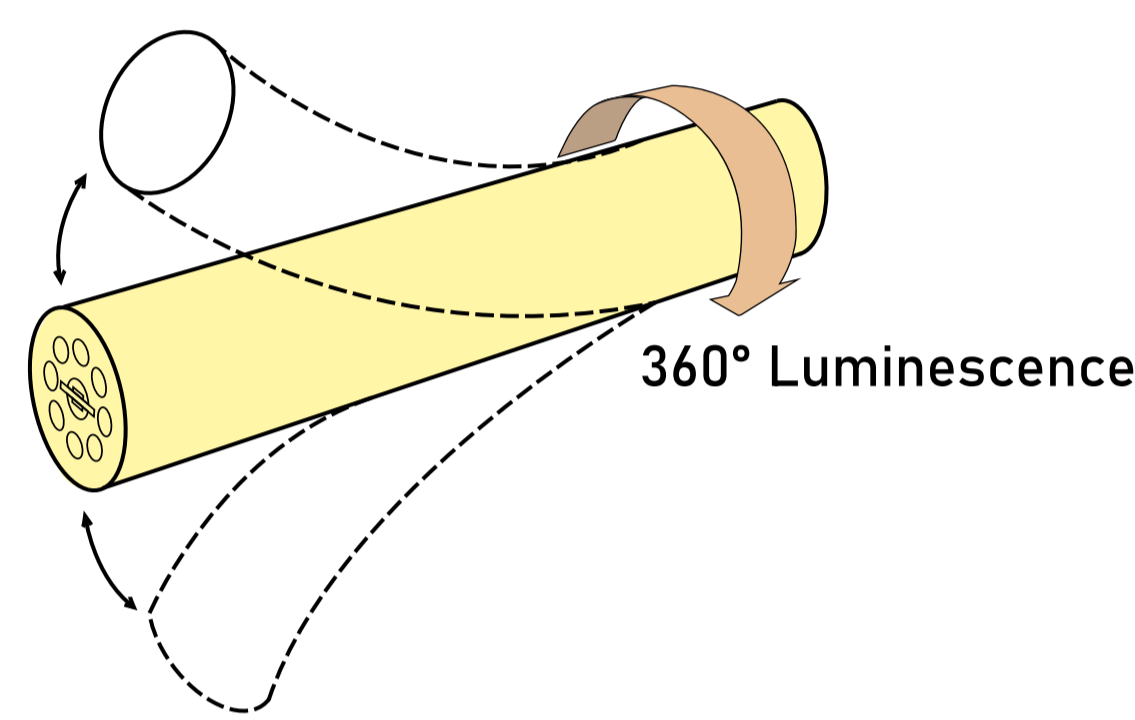
SKU:WJ-SNF-D30-MONO-12/24V



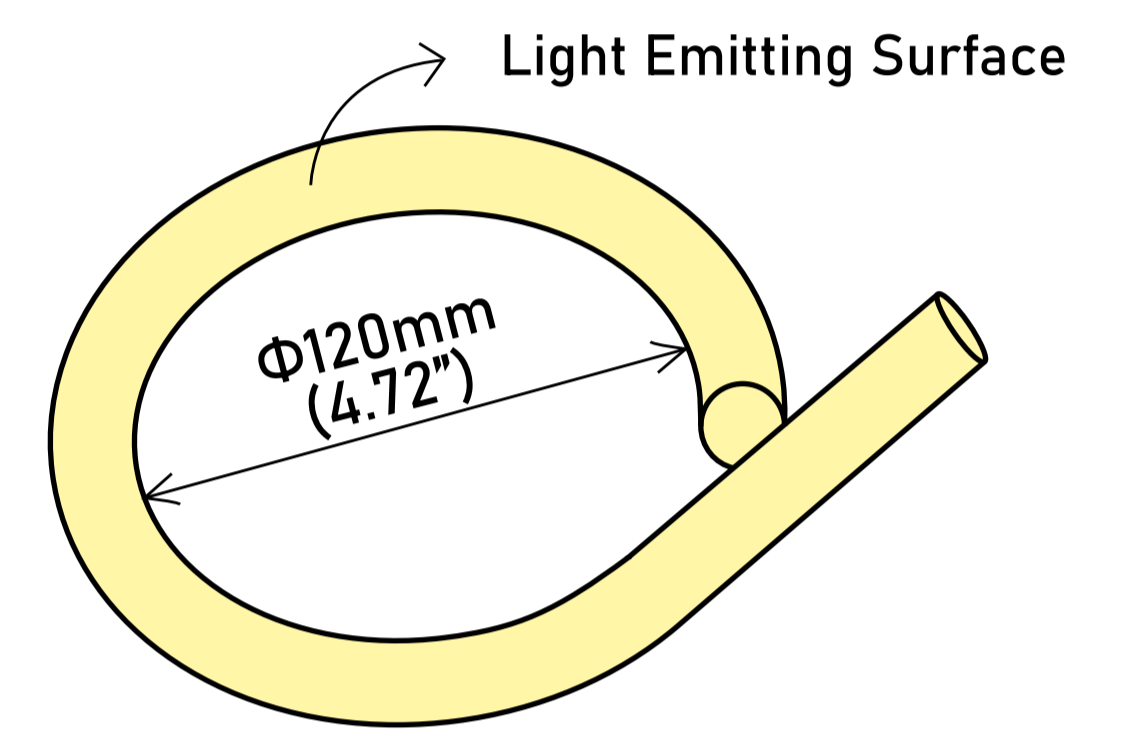
Structural Drawing & Bending Direction



CIRCLE / LIGHT BEAM ANGLE:360°



BENDING DIRECTION:
VERTICAL



MINIMUM BENDING DIAMETER

Certifications



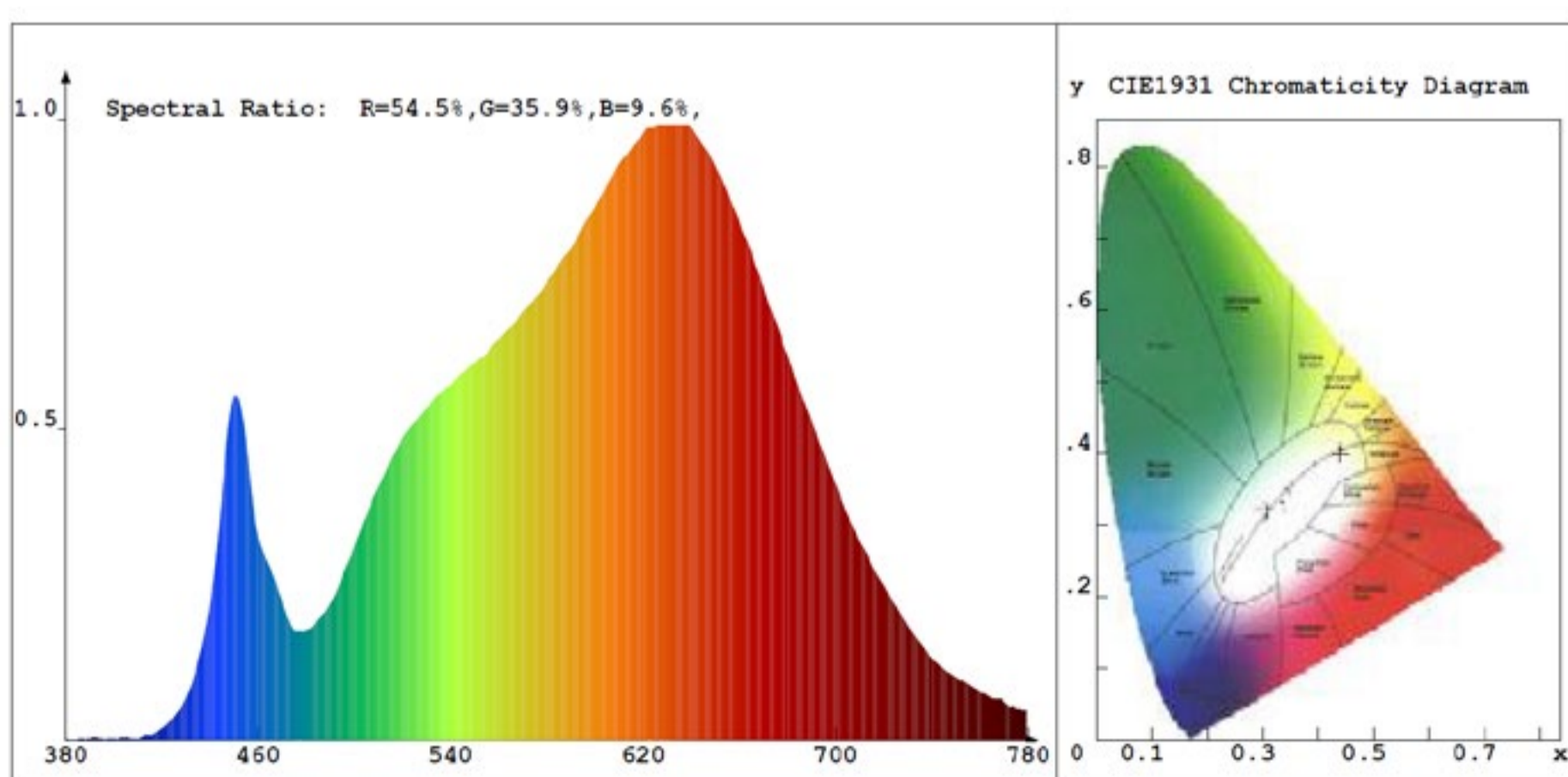
Technical Data

Color temperature : 2200K ● ● ● ● ● 10000K

ALL COLOS MAX LOADING: 5m

COLOR	CCT/WAVE	LED QUANTITY	UNIT CUT (12V)	UNIT CUT (24V)	WATTS/M (24V)	LUMEN/M (24V)
Warm White	2895K/585.1nm	2x 120 LEDs/m	2.5cm	5cm	16.55 W	1056.52 lm
Cool White	10765K/472.2nm	2x 120 LEDs/m	2.5cm	5cm	16.58 W	979.79 lm
Red	1008K/624.3nm	2x 120 LEDs/m	2.5cm	5cm	15.48 W	365.44 lm
Green	8151K/526.2nm	2x 120 LEDs/m	2.5cm	5cm	16.99 W	1110.10 lm
Blue	465.3nm	2x 120 LEDs/m	2.5cm	5cm	17.27 W	157.47 lm
Yellow	1914K/588.6nm	2x 120 LEDs/m	2.5cm	5cm	16.57 W	1051.55 lm
Orange	1085K/604.8nm	2x 120 LEDs/m	2.5cm	5cm	16.51 W	649.22 lm
Light Pink	1557K/634.4nm	2x 120 LEDs/m	2.5cm	5cm	16.56 W	845.61 lm
Pink (Violet)	568.0nm	2x 120 LEDs/m	2.5cm	5cm	15.96 W	268.21 lm
Purple	451.6nm	2x 120 LEDs/m	2.5cm	5cm	16.29 W	198.22 lm

Optical Parameter Chart for Integrating Sphere Testing

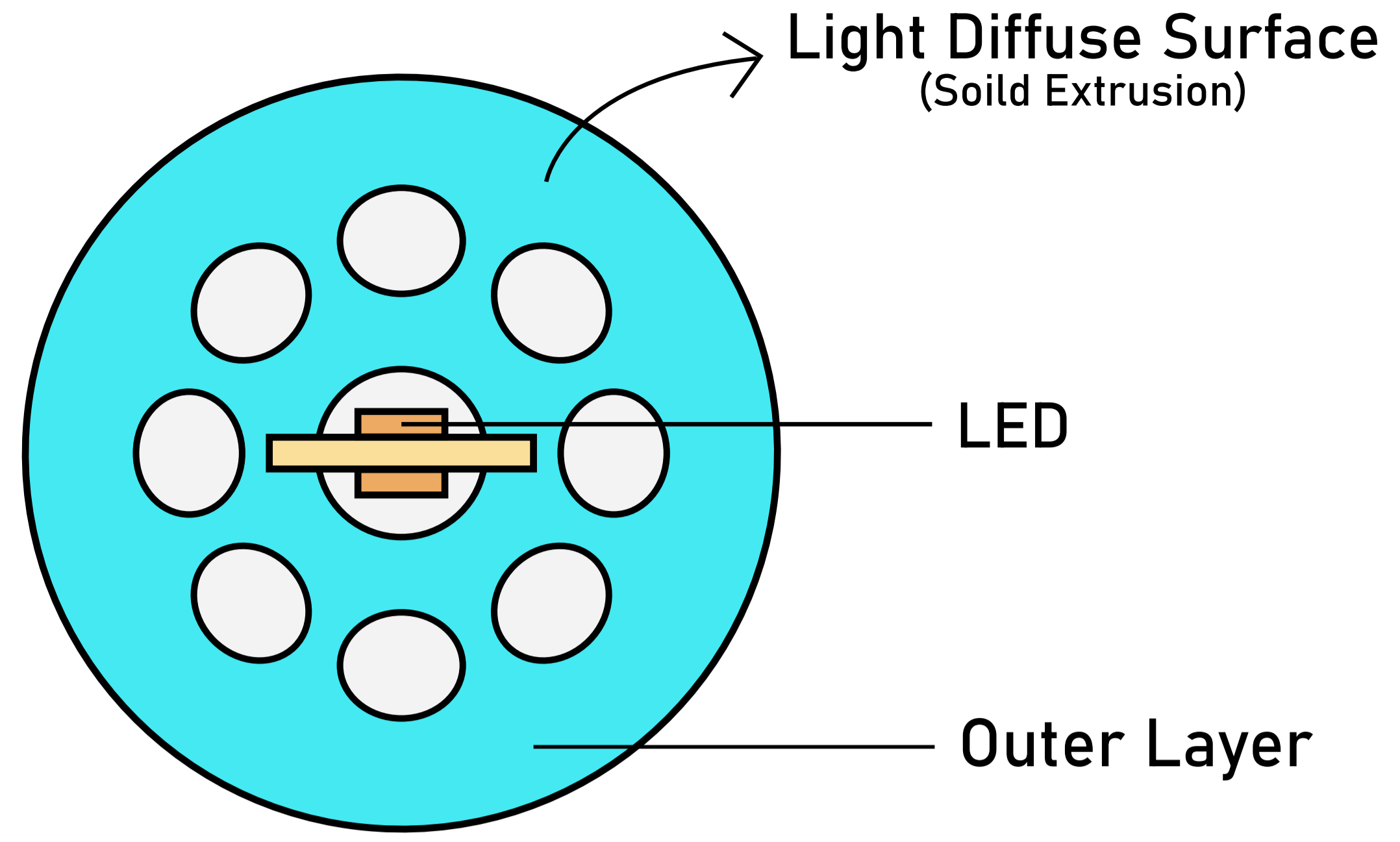
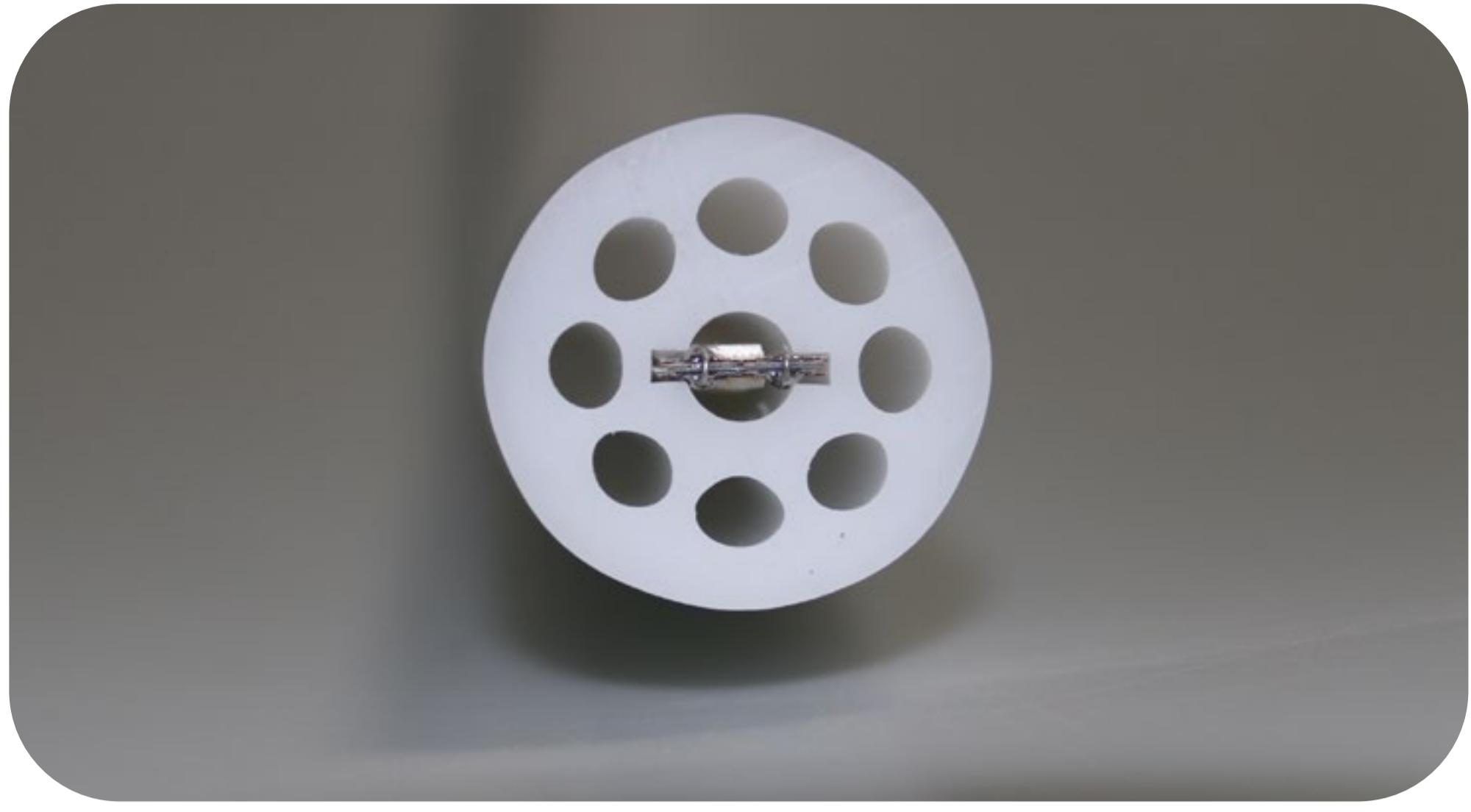


Reliability test

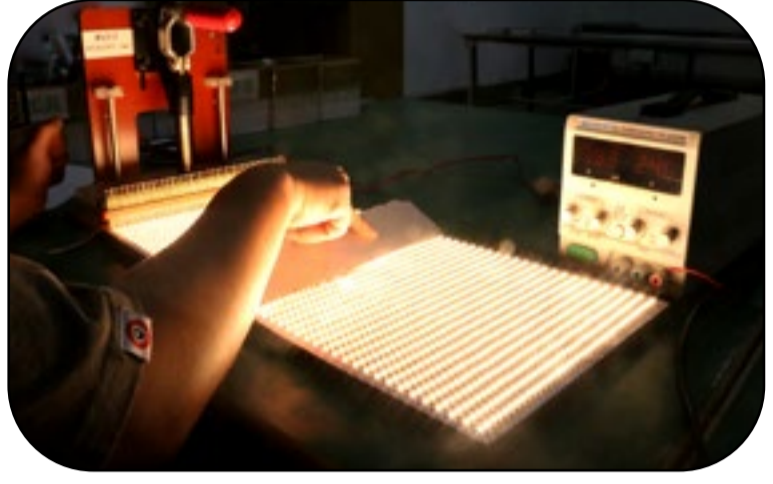
TEST CATEGORY	TEST ITEMS	STANDARD/VALUE
Optical Test	Spectrum Analysis	IES LM 79(CCT, lumen, CRI, SDCM, XY, wavelength)
	Photometric Distribution	IES LM 79(lumen intensity distribution & Lux diagram)
	Lumen Maintenance & Lifetime	IES LM84 & IES TM 28
Temperature Test	Nomal Temperature Test -25°C	UL 1598 & UL2388 & IEC60598-1 & IEC60598-2-21
	Abnormal Operation Test -70°C	UL 1598 & UL2388 & IEC60598-1 & IEC60598-2-21
Physics Test	Bending Test	Manufacturer-defined, 1000 cycles
	Swing Test	UL2388, >750 cycles
	Tensile Test	Manufacturer-defined, >the weight of light in max. running length by double ends feed
	Twist Test	Manufacturer-defined, 200 cycles
	IK08	IEC62262
	Ball Impact	UL 1598 & UL2388 & IEC60598-1 & IEC60598-2-21
Weathering Test	Swimming Pool Water Immersion Test	GB9667, PH6.8-7.6, free chlorine 0.3-0.6mg/L
	Sea Water Immersion Test	IEC 60598-1, Salinity 4%
	Salt Spray Test	IEC68-2-11
	Outdoor Exposure	Manufacturer-defined
Environment Test	Flame Resistant Test	UL94
	UV Exposure Test	ASTMG154, UVA@340nm
	IPX5 IPX6 IPX7 IPX8	IEC60529
	Temperature Shock Test	Manufacturer-defined, -40°C-60°C(typical temperature range)
	Constant Temperature Test	Manufacturer-defined, 70°C(typical temperature range)

Wilgex specializes in engineering LED flexible neon lights and offers both standard and customized services. If you have specific requirements, please contact our sales department.

Four-star quality assurance



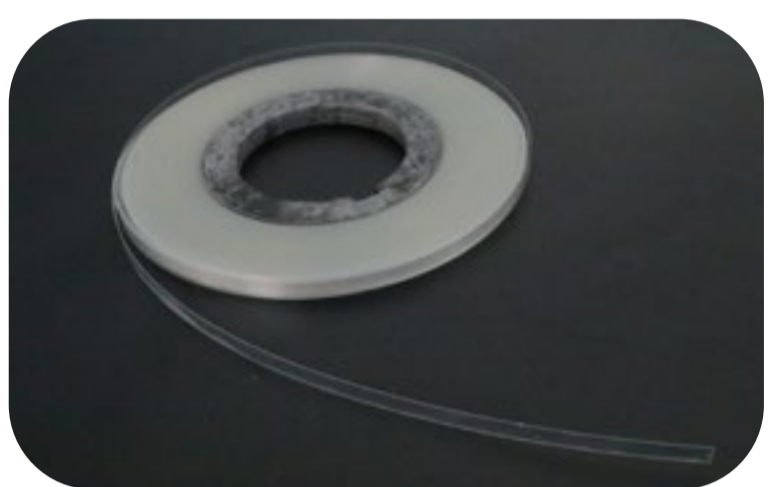
Unique Design



★ Enhance thickness FPC design principle



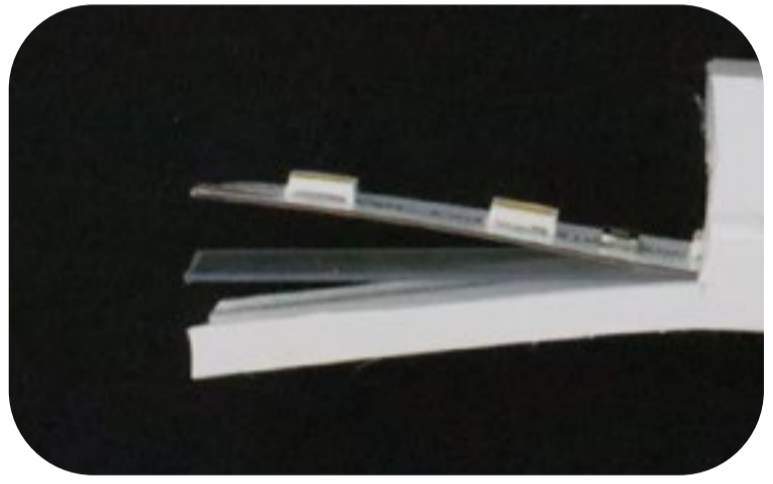
★ LED anti-death design



★ Add a break protection layer



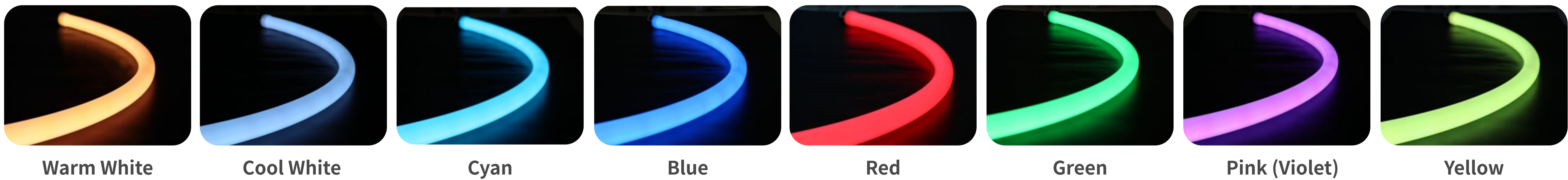
★ Solid extrusion design for exterior



Features:

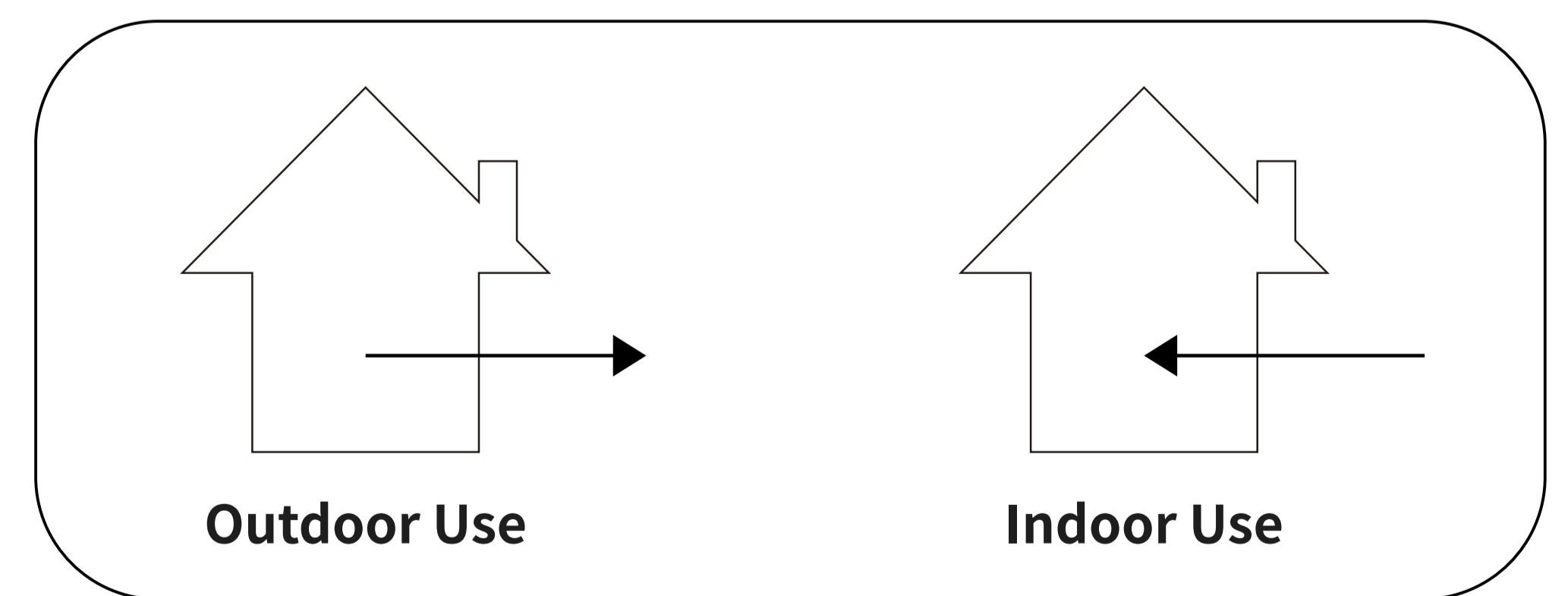
1. Size: The LED chips have a size of $\Phi 30\text{mm}$ in round shape.
2. High-density LED chips: The strips have a high density of LED chips, resulting in a brighter and more uniform light output
3. Flexible and bendable: Can be bent into various shapes and designs
4. Energy-efficient: Uses less power compared to traditional neon lights
5. Long lifespan: Can last up to 50,000 hours
6. Low heat emission: Does not emit as much heat as traditional neon lights
7. Wide color options: Available in a wide range of colors
8. Easy to install: Can be cut and connected to fit any desired length and shape
9. Durable and weather-resistant: Can withstand various weather conditions
10. Safe to use: Low voltage and does not contain hazardous materials like mercury
11. Cost-effective: Offers a cost-effective alternative to traditional neon lights.

Wide Color Options

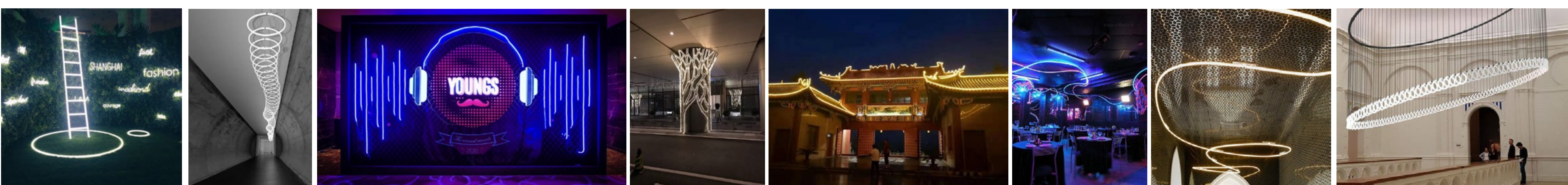


Recommended Usage Scenarios :

1. Indoor and outdoor architectural lighting decoration
2. Landscape lighting
3. Advertising signage lighting
4. Stage and theater lighting
5. Car and motorcycle lighting
6. Holiday and event lighting decoration
7. Cove lighting
8. Edge-lit lighting
9. Retail and display lighting
10. Restaurant and bar lighting



Please note that these are only recommended usage scenarios and it is important to consult the product specifications and guidelines before using flexible LED neon light strips in any application.



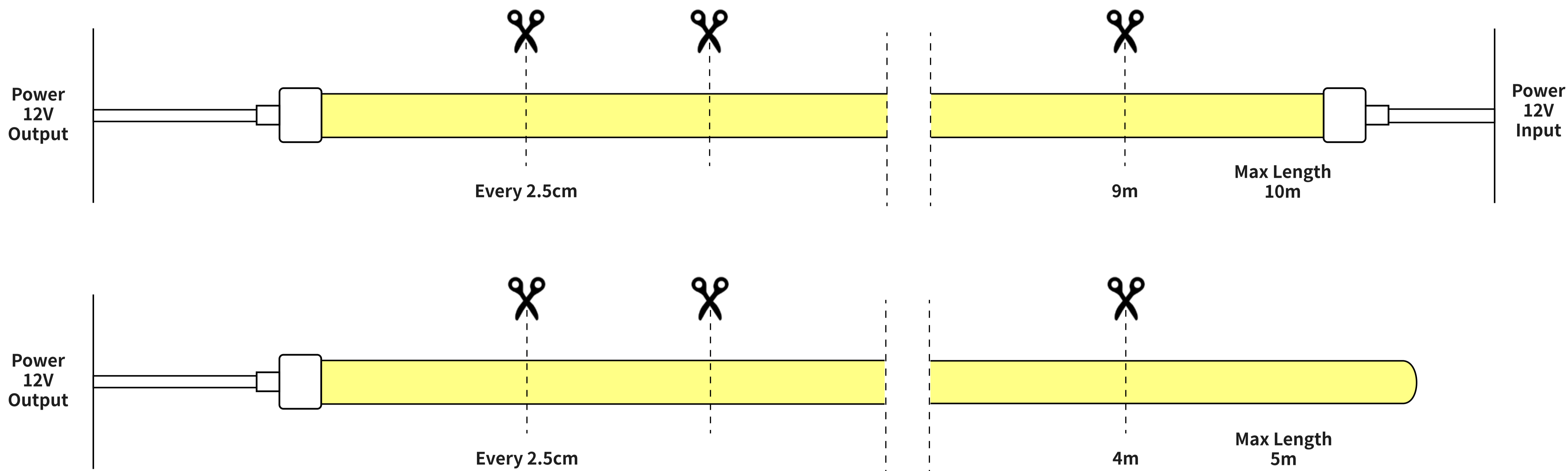
Package



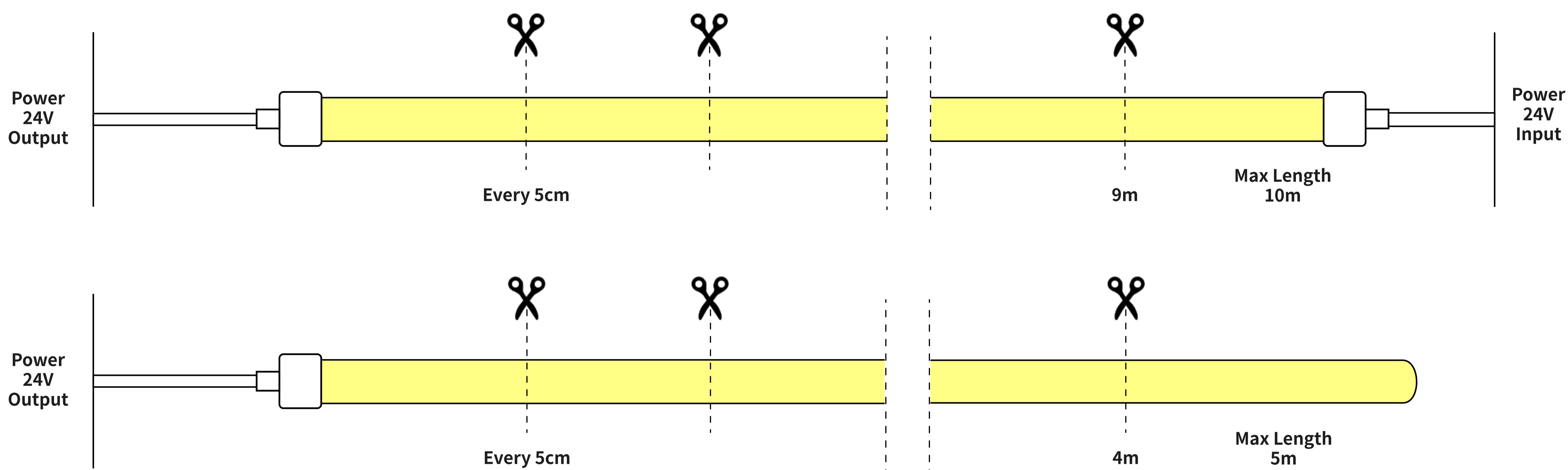
Packing Method : Blister + White box
 Quantity / Box : 5 meters / reel
 Gross Weight :3.62 Kg (7.98LB)
 Size of outer box : 52x 52x 7 cm
 CBM : 0.019m³ / box

Mini Cutting Length & Connection Length

• Voltage (12V)



•Low Voltage (24V)



IP68 (Injection Mould Connector/Seamless Connection)

• Voltage (12V/24V)



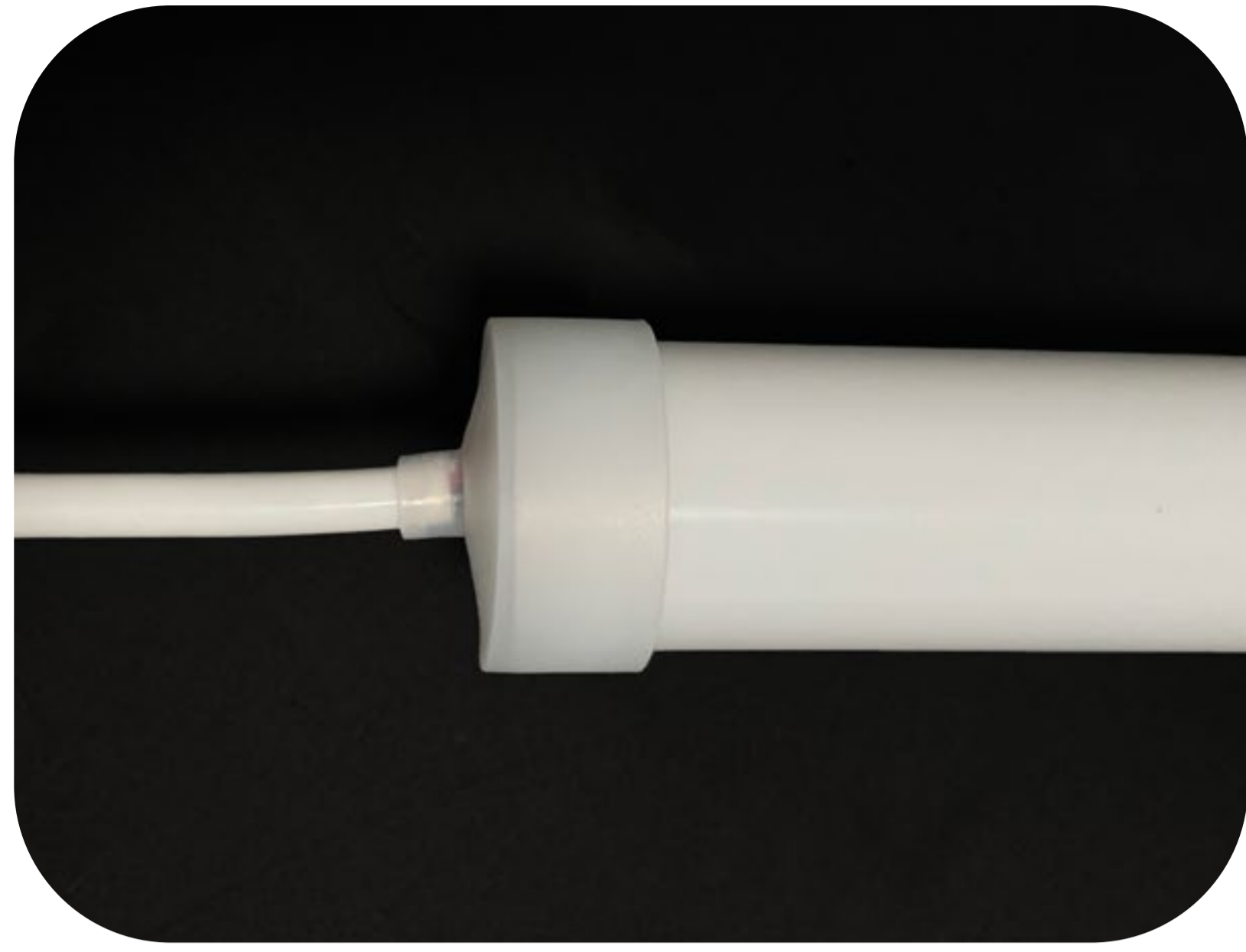
STRAIGHT EXIT



BOTTOM EXIT

IP65 (DIY Connector)

• Voltage (12/24V)

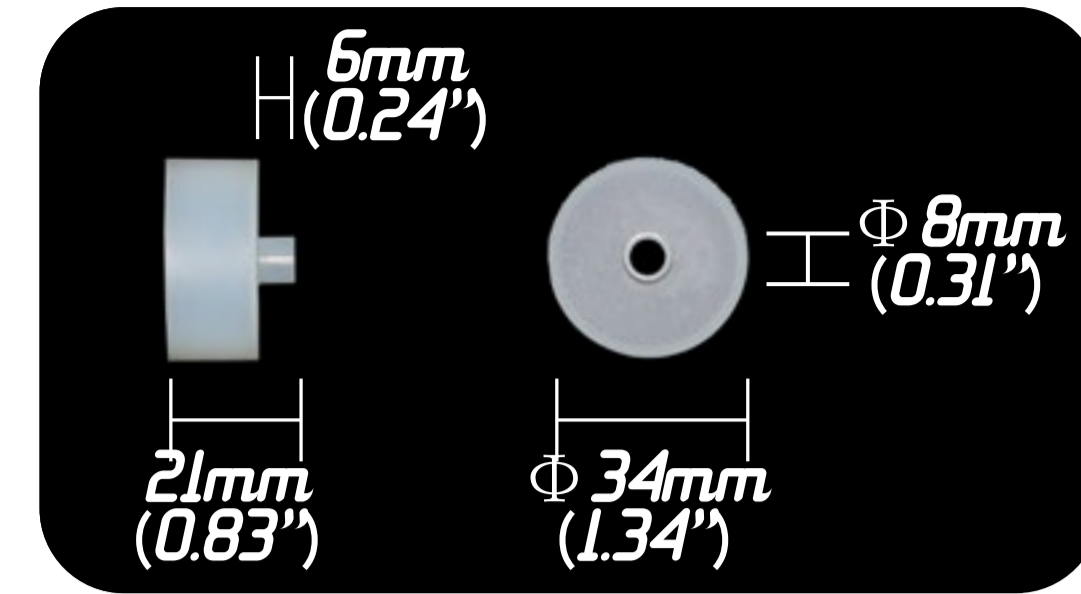


FRONT CONNECTION

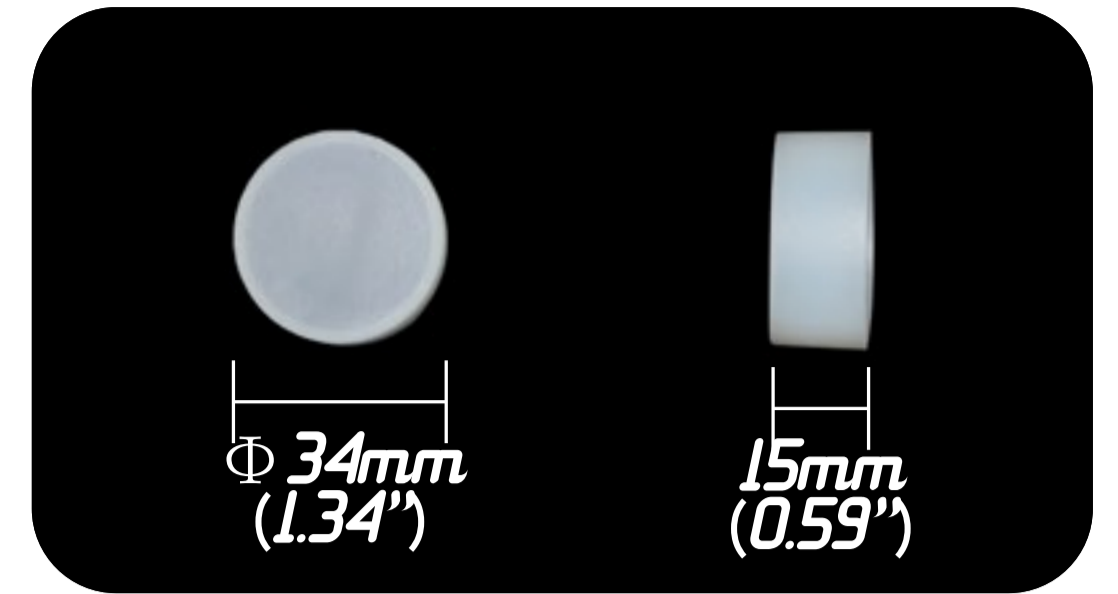


END CONNECTION

• Part Details



FRONT CONNECTION FITTING



TAIL FITTING



SILICONE POWER WIRE (2 CORDS)

Mounting Plastic Transparent Channel

