



Professional LED Light Manufacturer  
Since 2008

[www.wilgex-led.com](http://www.wilgex-led.com)

(86) 769-28820681

[info@wilgex-led.com](mailto:info@wilgex-led.com)

LED NEON FLEX

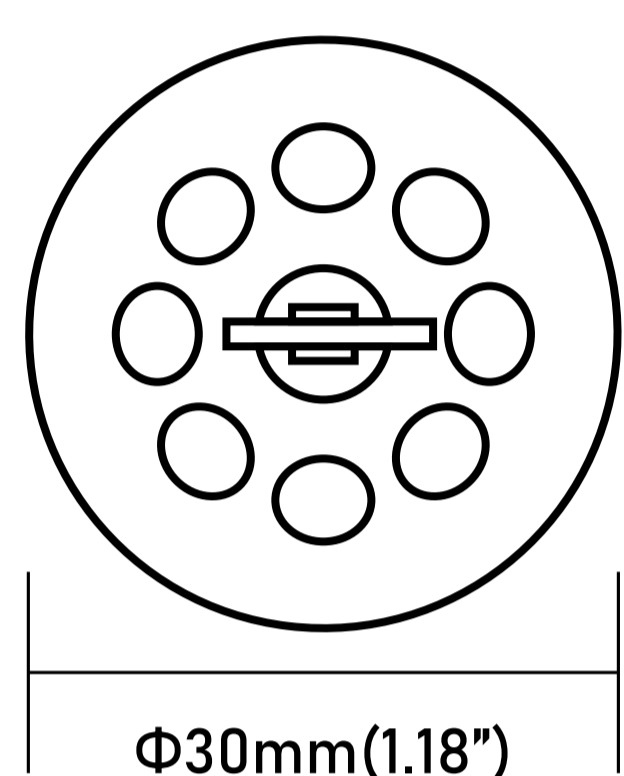
**Dia 30mm**  
ROUND

**RGBW COLOR**  
24V

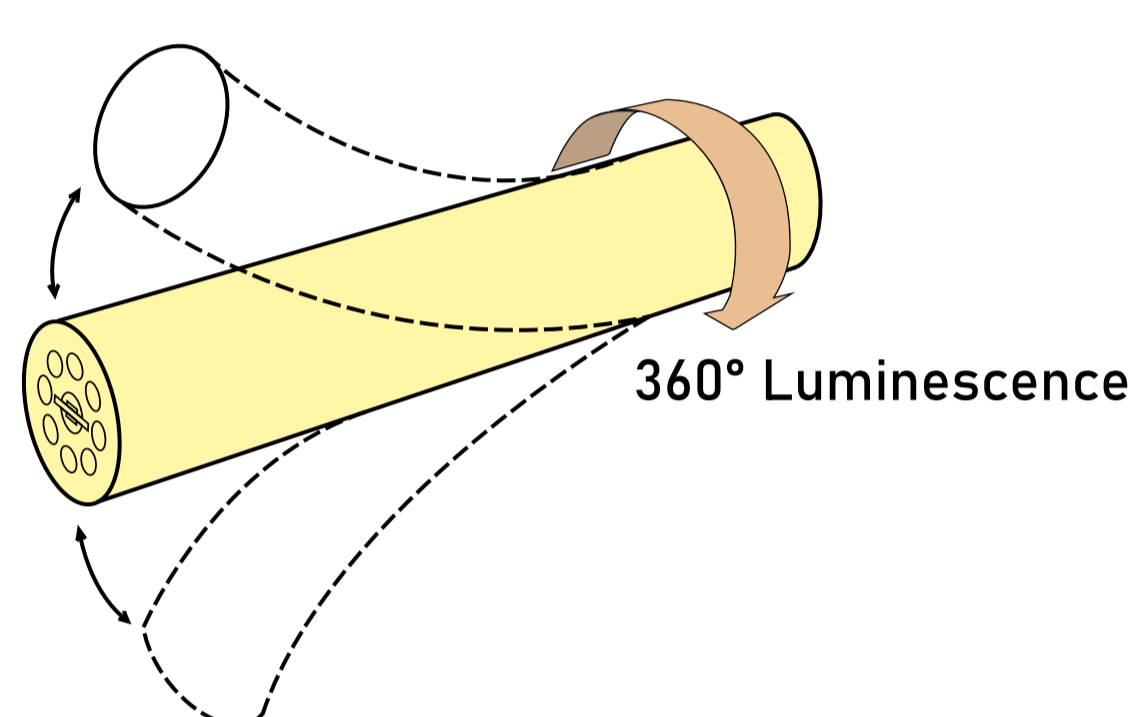
SKU:WJ-SNF-D30-RGBW-24V



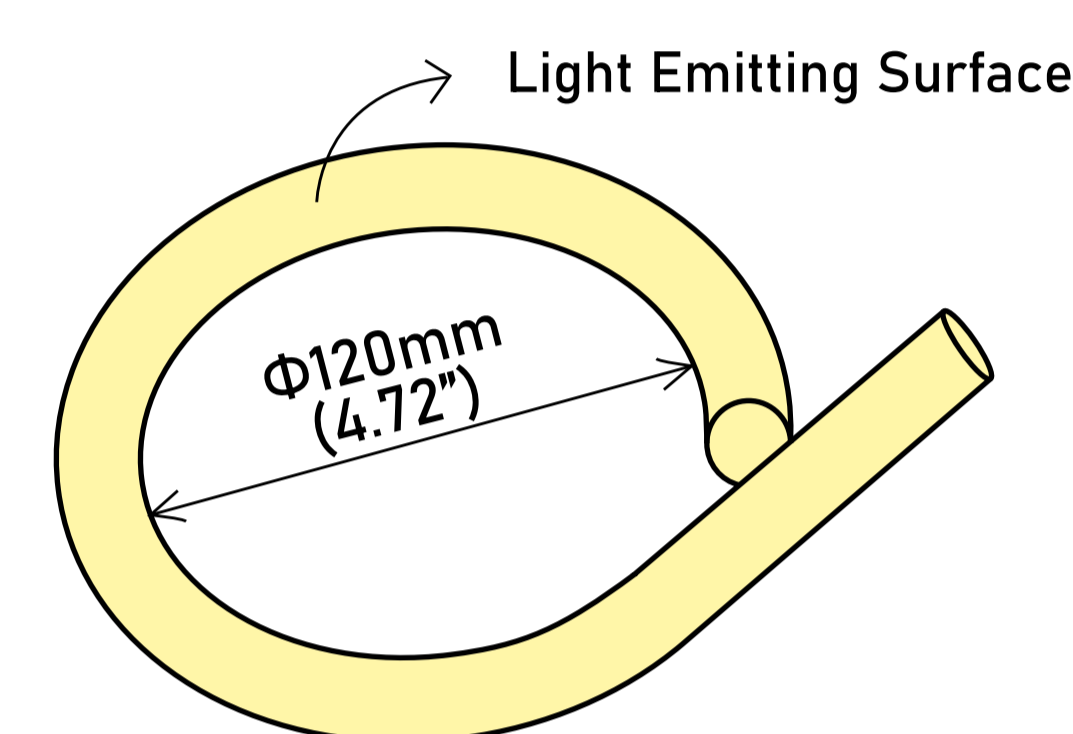
### Structural Drawing & Bending Direction



CIRCLE / LIGHT BEAM ANGLE:360°

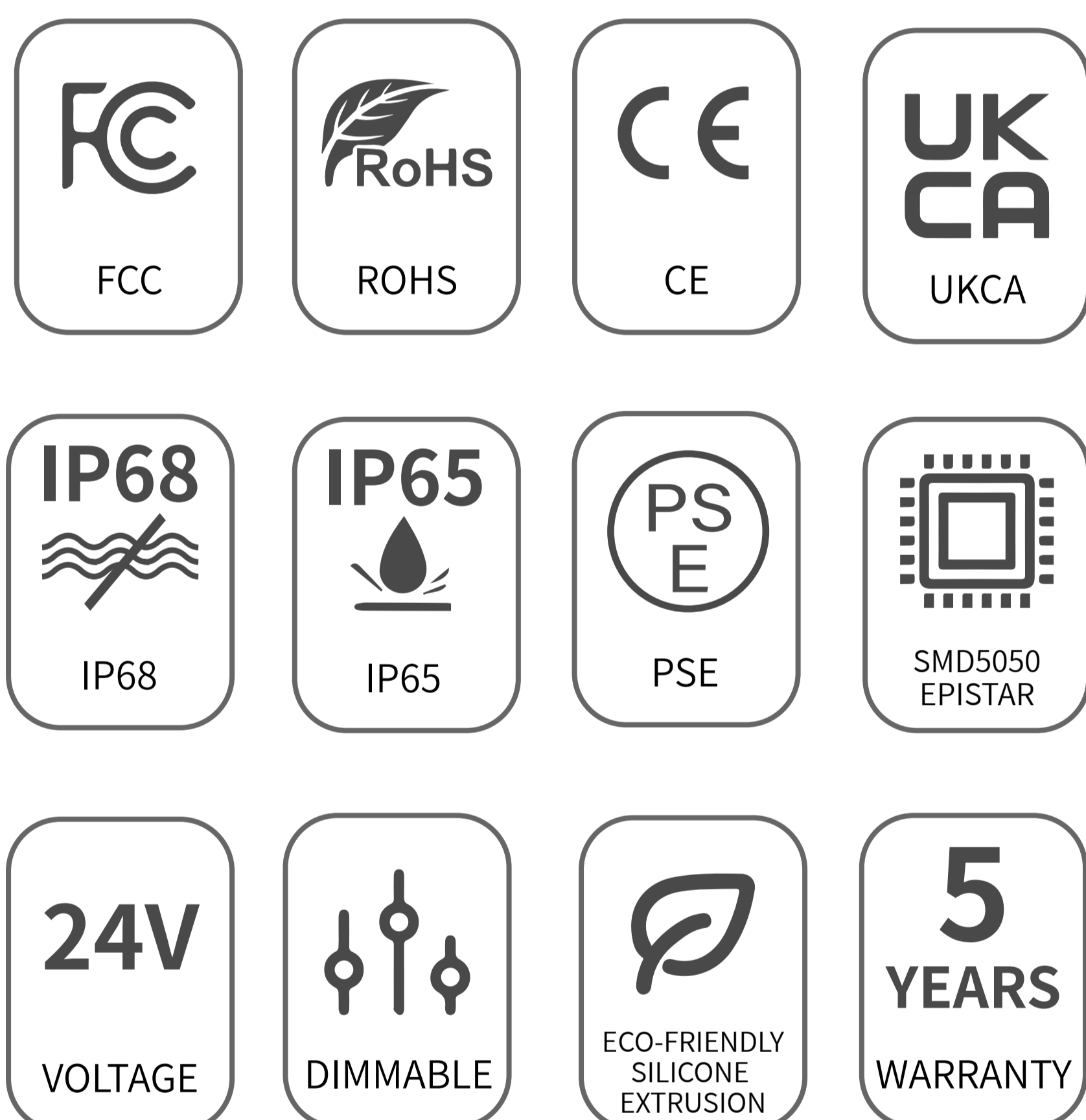


BENDING DIRECTION:  
VERTICAL



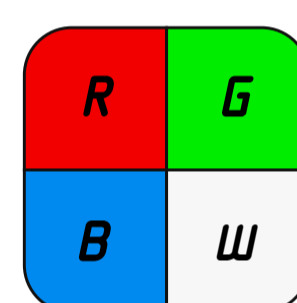
MINIMUM BENDING DIAMETER

### Certifications



### Technical Data

PWM-RGBW



<b>Color Temp</b>	Red:623.4nm Green:525.5nm Blue:470.1nm White:2905K RGBW:5948K(Color mixing)	<b>Watts/m( 24V Flat)</b>	Red:10.63 W Green:10.66 W Blue:10.06 W White:11.09 W RGBW:37.61 W (Color mixing)
<b>Lumen/m ( 24V Flat)</b>	Red:286.43 lm Green:10.66 W Blue:108.72 lm White:770.53 lm RGBW:1389.40lm(Color mixing)	<b>Unit Cut(24V)</b>	6.25cm
<b>LED Quantity(m)</b>	2x112 LEDs	<b>Max Loading(24V)</b>	5m

### Optical Parameter Chart for Integrating Sphere Testing

**Chroma Parameters**  
Chro.Coor.: x=0.3230 y=0.3327 u=0.2036 v=0.3145 duv=0.0000  
CCT: Tc= 5954K Dominant Wave.: 492.0nm Purity: 3.5%  
Flux Ratio: R=21.7%,G=72.2%,B=6.1% Peak Wave.: 637.6nm Half Width: 24.7nm

**Bending Index:** Ra= 65.5  
R1 =57.2 R2 =75.0 R3 =88.3 R4 =63.2 R5 =62.9 R6 =66.2 R7 =72.9  
R8 =38.8 R9 =-62.7 R10=43.5 R11=55.8 R12=61.7 R13=59.7 R14=90.9  
R15=50.0

**Photo Parameters**  
Flux: 1388.13lm Eff1.: 36.9lm/W Radiant: 4844.1mW Iv: 0.0mcd

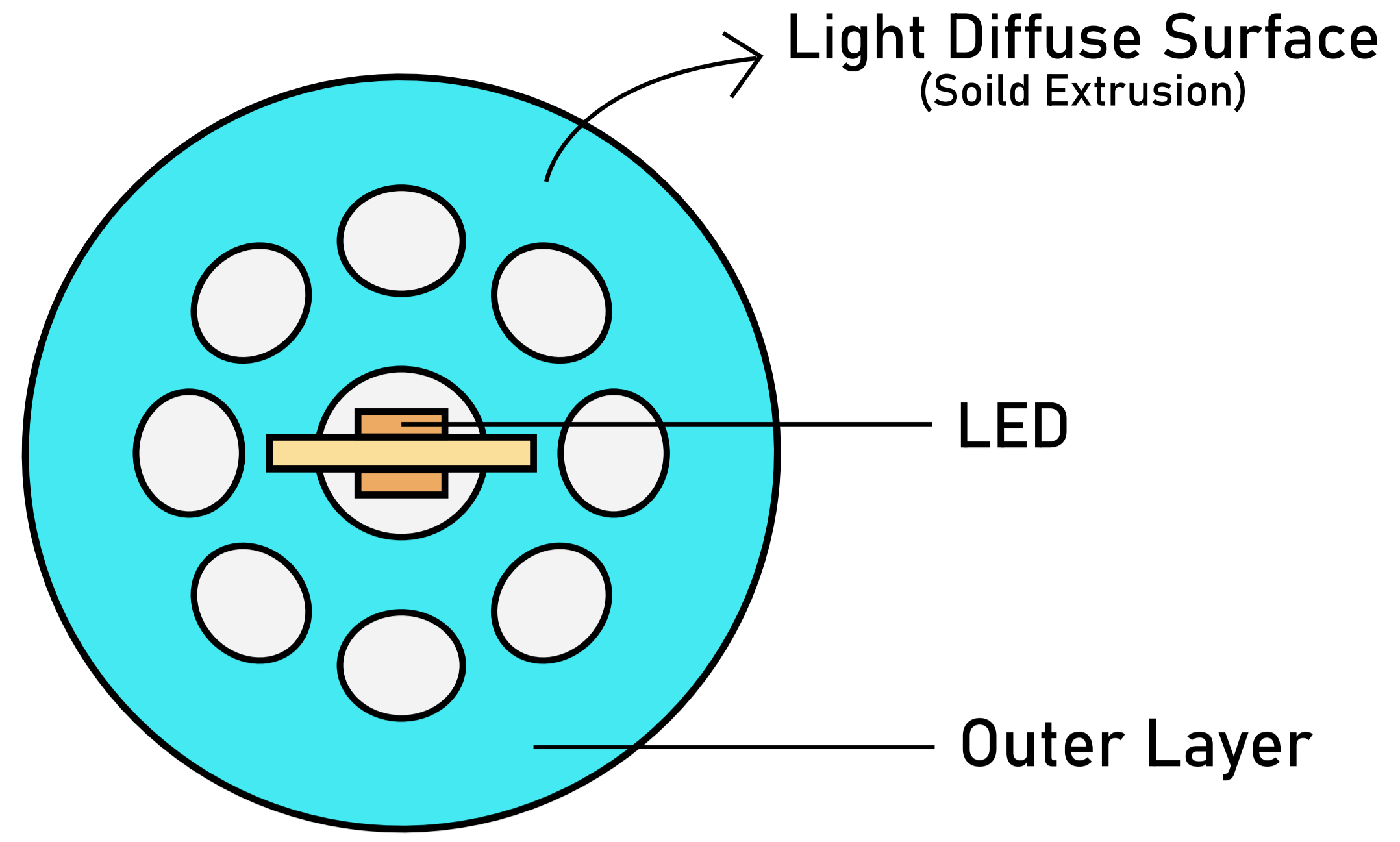
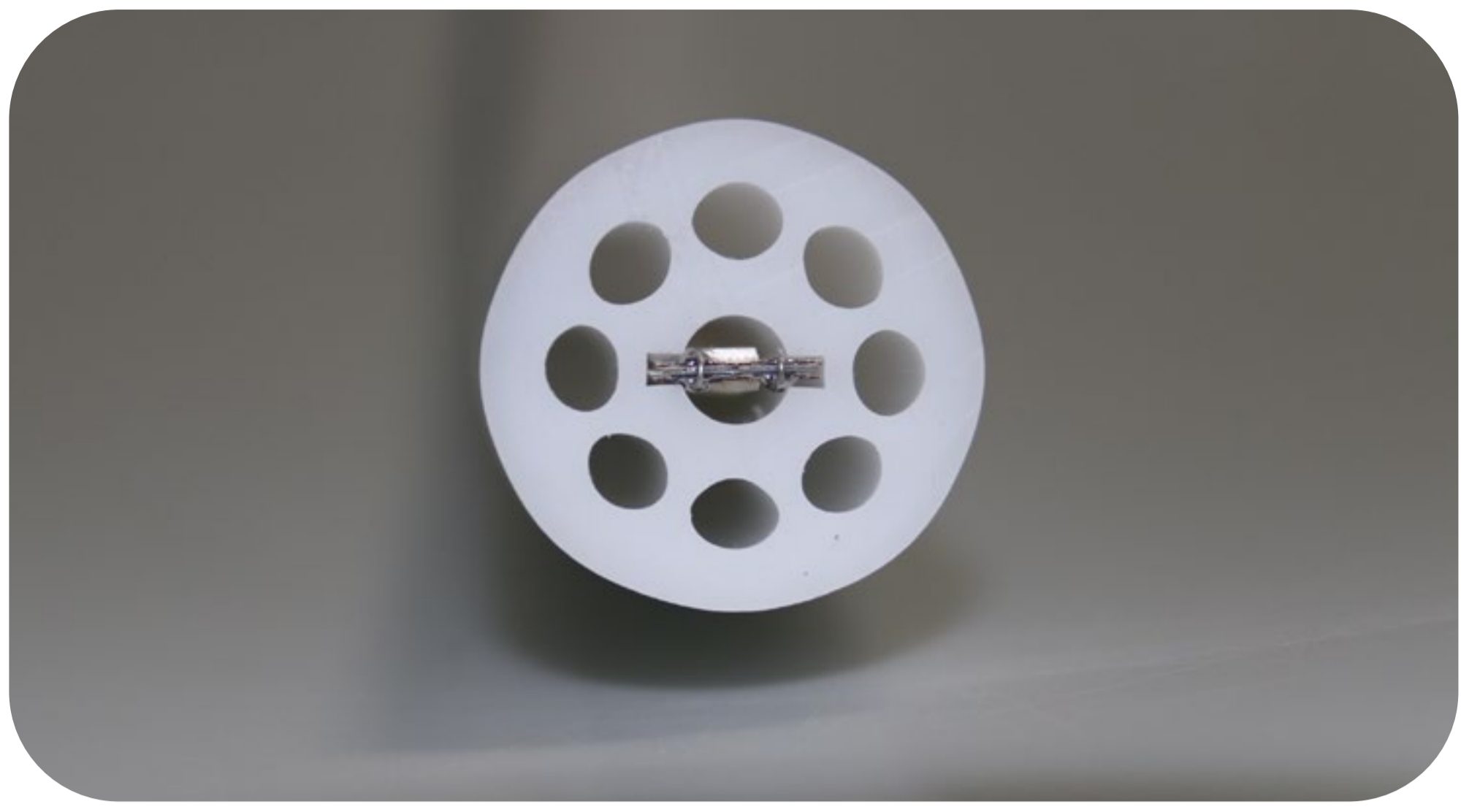
**Ele. Parameters**  
Voltage:U=24.000V Current:I=1.5650A  
Power:P=37.61W Power Factor:PF=1.000

### Reliability test

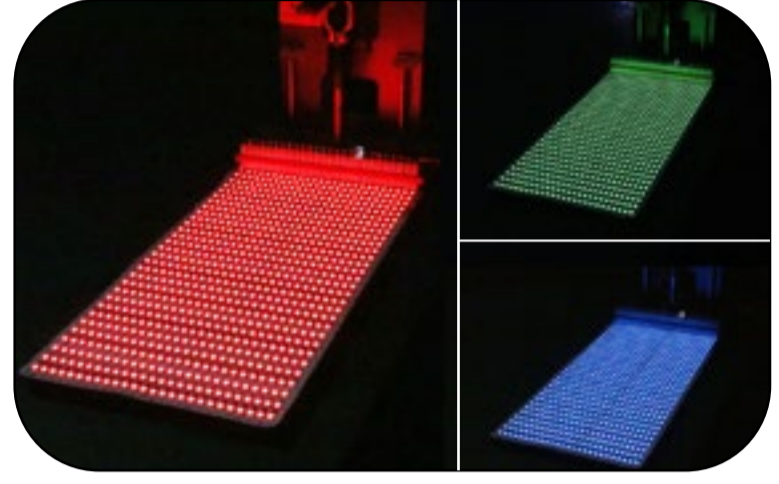
TEST CATEGORY	TEST ITEMS	STANDARD/VALUE
Optical Test	Spectrum Analysis	IES LM 79(CCT, lumen, CRI, SDCM, XY, wavelength)
	Photometric Distribution	IES LM 79(lumen intensity distribution & Lux diagram)
	Lumen Maintenance & Lifetime	IES LM84 & IES TM 28
Temperature Test	Nomal Temperature Test -25°C	UL 1598 & UL2388 & IEC60598-1 & IEC60598-2-21
	Abnormal Operation Test -70°C	UL 1598 & UL2388 & IEC60598-1 & IEC60598-2-21
Physics Test	Bending Test	Manufacturer-defined, 1000 cycles
	Swing Test	UL2388, >750 cycles
	Tensile Test	Manufacturer-defined, >the weight of light in max. running length by double ends feed
	Twist Test	Manufacturer-defined, 200 cycles
	IK08	IEC62262
Weathering Test	Ball Impact	UL 1598 & UL2388 & IEC60598-1 & IEC60598-2-21
	Swimming Pool Water Immersion Test	GB9667, PH6.8-7.6, free chlorine 0.3-0.6mg/L
	Sea Water Immersion Test	IEC 60598-1, Salinity 4%
	Salt Spray Test	IEC68-2-11
Environment Test	Outdoor Exposure	Manufacturer-defined
	Flame Resistant Test	UL94
	UV Exposure Test	ASTMG154, UVA@340nm
	IPX5 IPX6 IPX7 IPX8	IEC60529
	Temperature Shock Test	Manufacturer-defined, -40°C-60°C(typical temperature range)
	Constant Temperature Test	Manufacturer-defined, 70°C(typical temperature range)

Wilgex specializes in engineering LED flexible neon lights and offers both standard and customized services. If you have specific requirements, please contact our sales department.

**Four-star quality assurance**



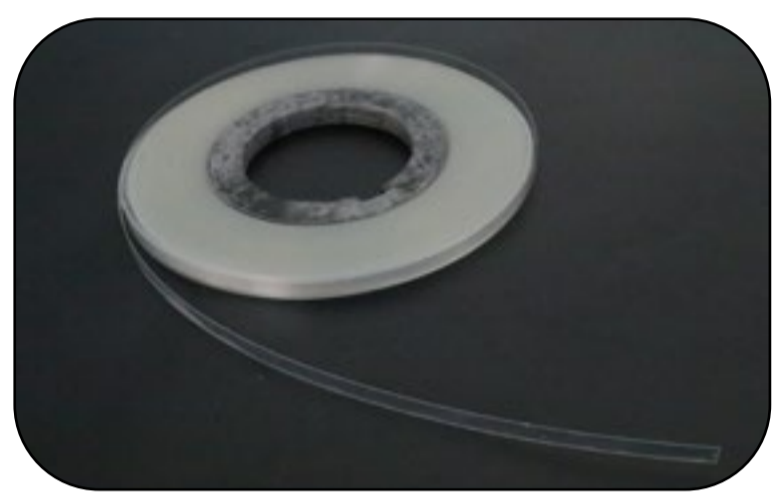
**Unique Design**



★ Enhance thickness FPC design principle



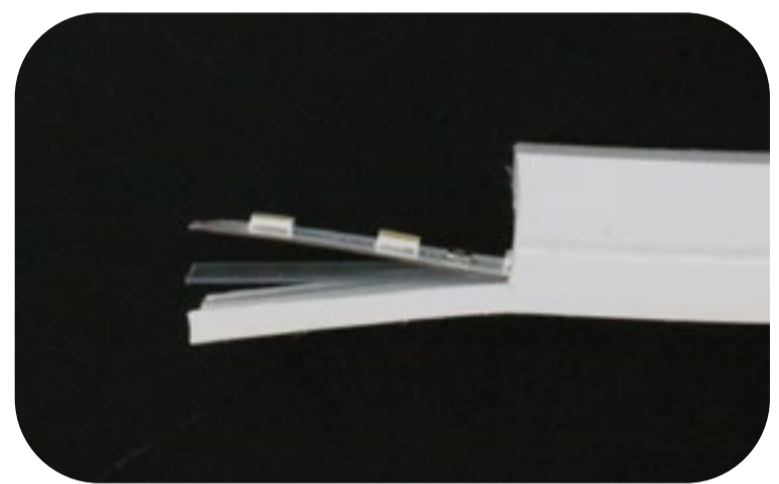
★ LED anti-death design



★ Add a break protection layer



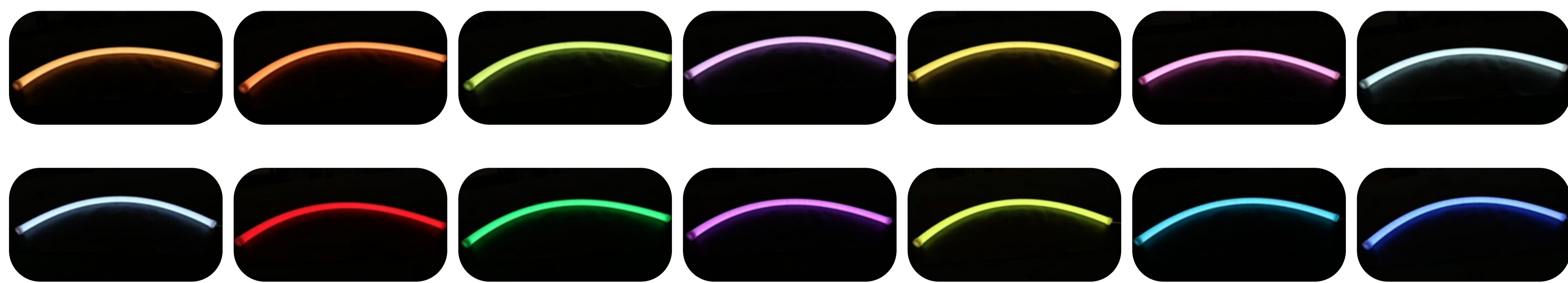
★ Solid extrusion design for exterior



**Features:**

1. Size: The LED chips have a size of  $\Phi 30\text{mm}$  in round shape.
2. Color: The RGBW LED flexible neon light strip can display a wide range of colors, including red, green, blue, and white. This allows for a high degree of customization and creativity in lighting design.
3. Flexibility: The LED strip is flexible and can be bent and twisted to fit any shape or space. This makes it ideal for installations in tight spaces or for creating unique lighting designs.
4. Durability: The LED strip is made of durable materials that are resistant to water, dust, and other environmental factors. This makes it suitable for both indoor and outdoor applications.
5. Energy Efficiency: The LED strip consumes very little energy compared to traditional lighting sources, making it an eco-friendly and cost-effective lighting solution.
6. Easy to Install: The LED strip is easy to install and can be cut to fit any length. It can be attached to a variety of surfaces using mounting brackets or adhesive tape.
7. Overall, the RGBW LED flexible neon light strip is a versatile, durable, and energy-efficient lighting solution that offers a wide range of design possibilities.

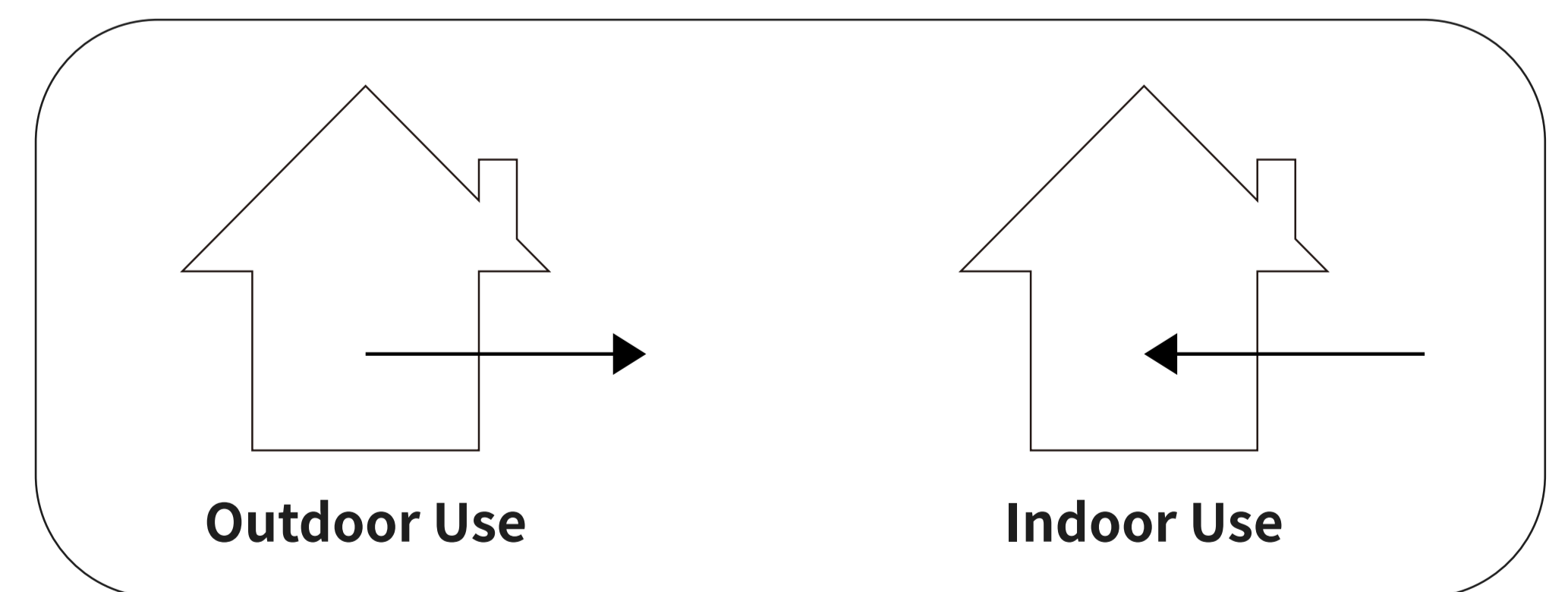
**Wide Color Options**



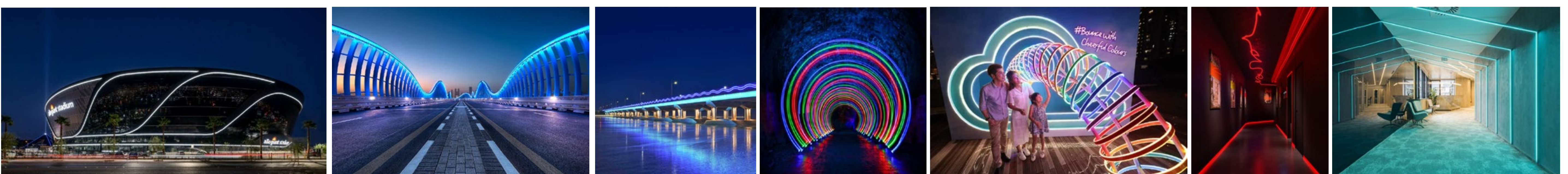
RGBW Color Mixing - Color changing, Fading, Chasing effect

**Recommended Usage Scenarios :**

1. Indoor and outdoor architectural lighting decoration
2. Landscape lighting
3. Advertising signage lighting
4. Stage and theater lighting
5. Car and motorcycle lighting
6. Holiday and event lighting decoration
7. Cove lighting
8. Edge-lit lighting
9. Retail and display lighting
10. Restaurant and bar lighting



Please note that these are only recommended usage scenarios and it is important to consult the product specifications and guidelines before using flexible LED neon light strips in any application.



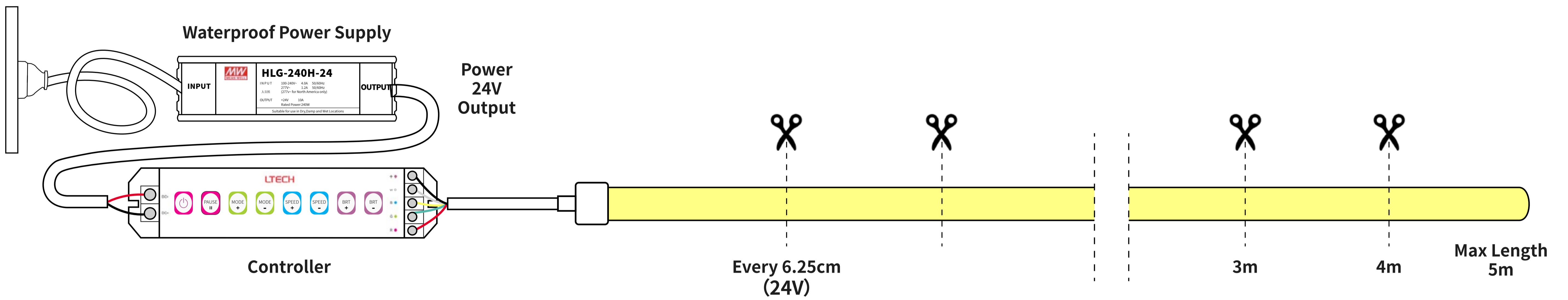
**Package**



Packing Method : Blister + White box  
 Quantity / Box : 5 meters / reel  
 Gross Weight :3.62 Kg ( 7.98LB)  
 Size of outer box : 52x 52x 7 cm  
 CBM : 0.019m<sup>3</sup> / box

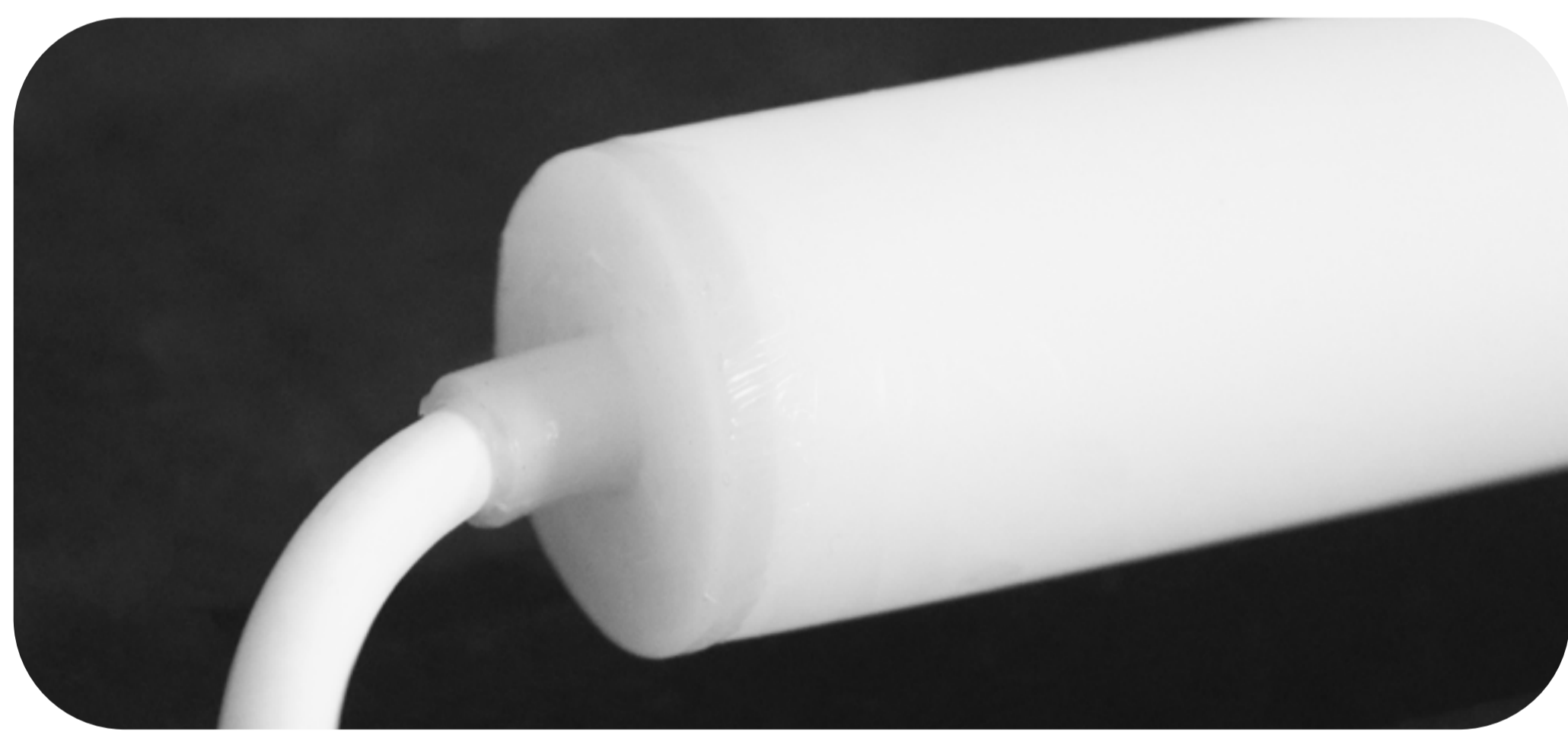
**Mini Cutting Length & Connection Length**

**• Voltage ( 24V)**



**IP68 (Injection Mould Connector/Seamless Connection)**

**• Voltage ( 24V)**



STRAIGHT EXIT



BOTTOM EXIT

**IP65 (DIY Connector)**

**• Voltage ( 24V)**

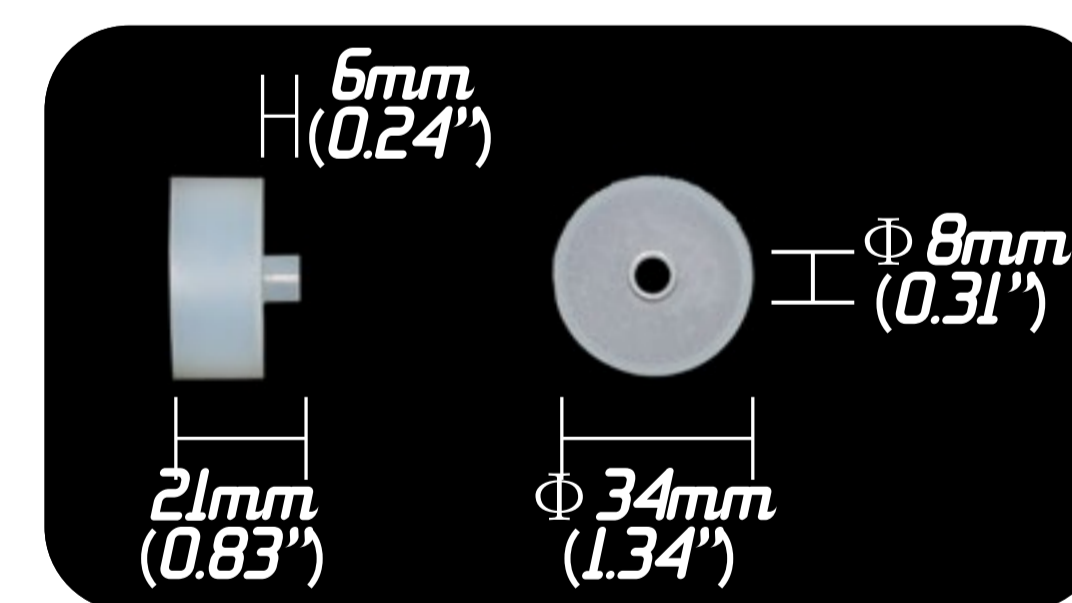


FRONT CONNECTION

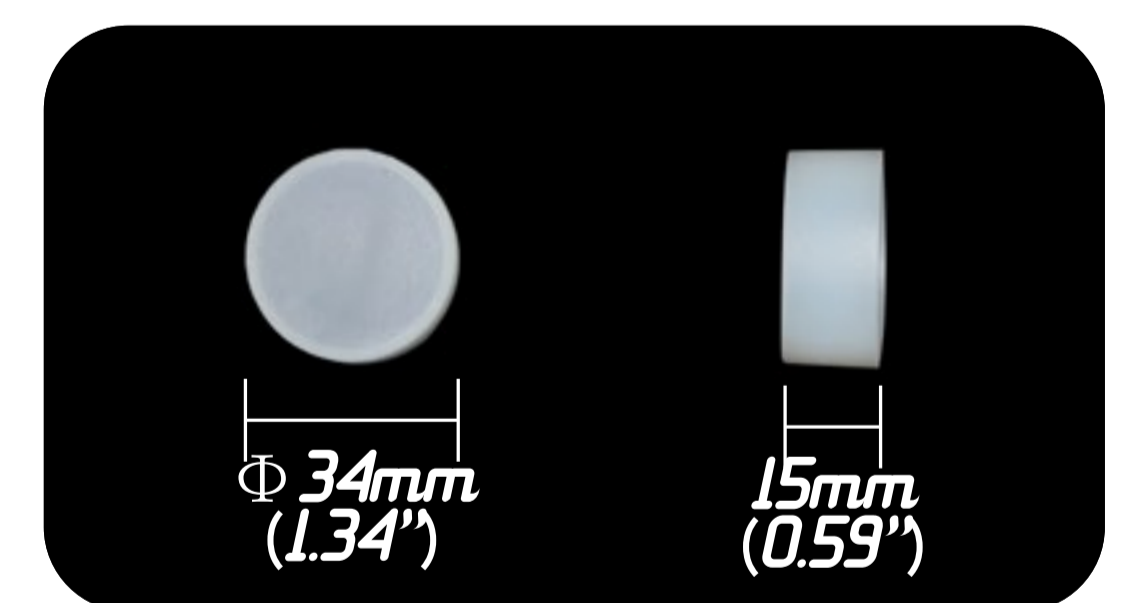


END CONNECTION

**• Part Details**



FRONT CONNECTION FITTING



TAIL FITTING



SILICONE POWER WIRE ( 5 CORDS)

**Mounting Plastic Transparent Channel**



3.8CM PLASTIC TRANSPARENT CLIP

