

LUMINAIRE PHOTOMETRIC TEST REPORT

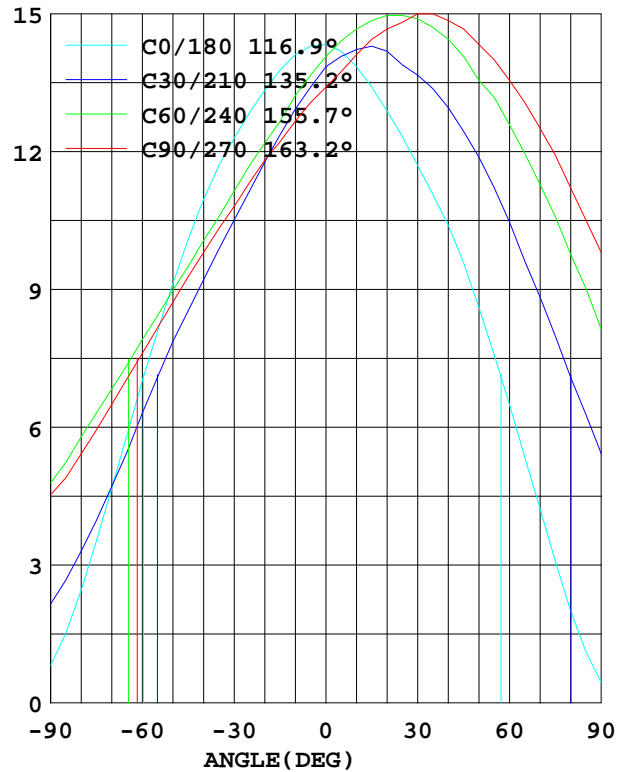
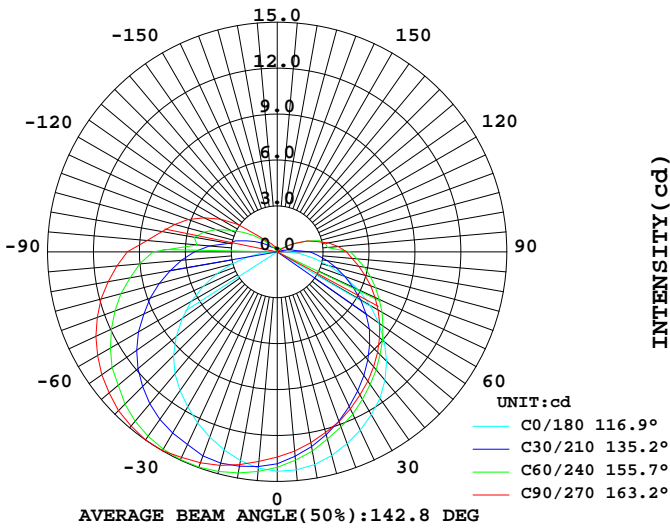
Report number:

MANUFACTURER:			
Address:			
NAME:		TYPE:	WEIGHT:
SPECIFICATION:	CCT(K): 0	DIMENSION:	SERIAL No.:

DATA OF LAMP		Imax(cd)	15.03	S/MH(C0/180)	1.28
MODEL		EFFICIENCY(%)	100.0	S/MH(C90/270)	1.21
NOMINAL POWER(W)	7	TOTAL FLUX(lm)	66.398	Voltage(V)	24.21
RATED VOLTAGE(V)	24	EFFICIENCY(lm/W)	10.2	Current(A)	0.269
NOMINAL FLUX(lm)	66.4	η up(%)	14.6	Power(W)	6.530
LAMPS QUANTITY	1	η down(%)	85.4	Power Factor(PF)	1.000
TEST VOLTAGE(V)	24.2	Effective Flux(lm)	35.6	EEL	0.933

LUMINOUS INTENSITY DISTRIBUTION

LUMINOUS INTENSITY DISTRIBUTION



Test System:HOPOO HPG1800
 Temperature:25.3DEG
 Operators:
 Test Date:2025年06月26日

Test Set: 7.0deg/s C-Gamma (TYPE C)
 Humidity:65.0%
 Test Distance:6.100 m
 Remarks:

Color Temperature Data List

Report number:

MANUFACTURER:			
Address:			
NAME:		TYPE:	WEIGHT:
SPECIFICATION:	CCT(K): 0	DIMENSION:	SERIAL No.:

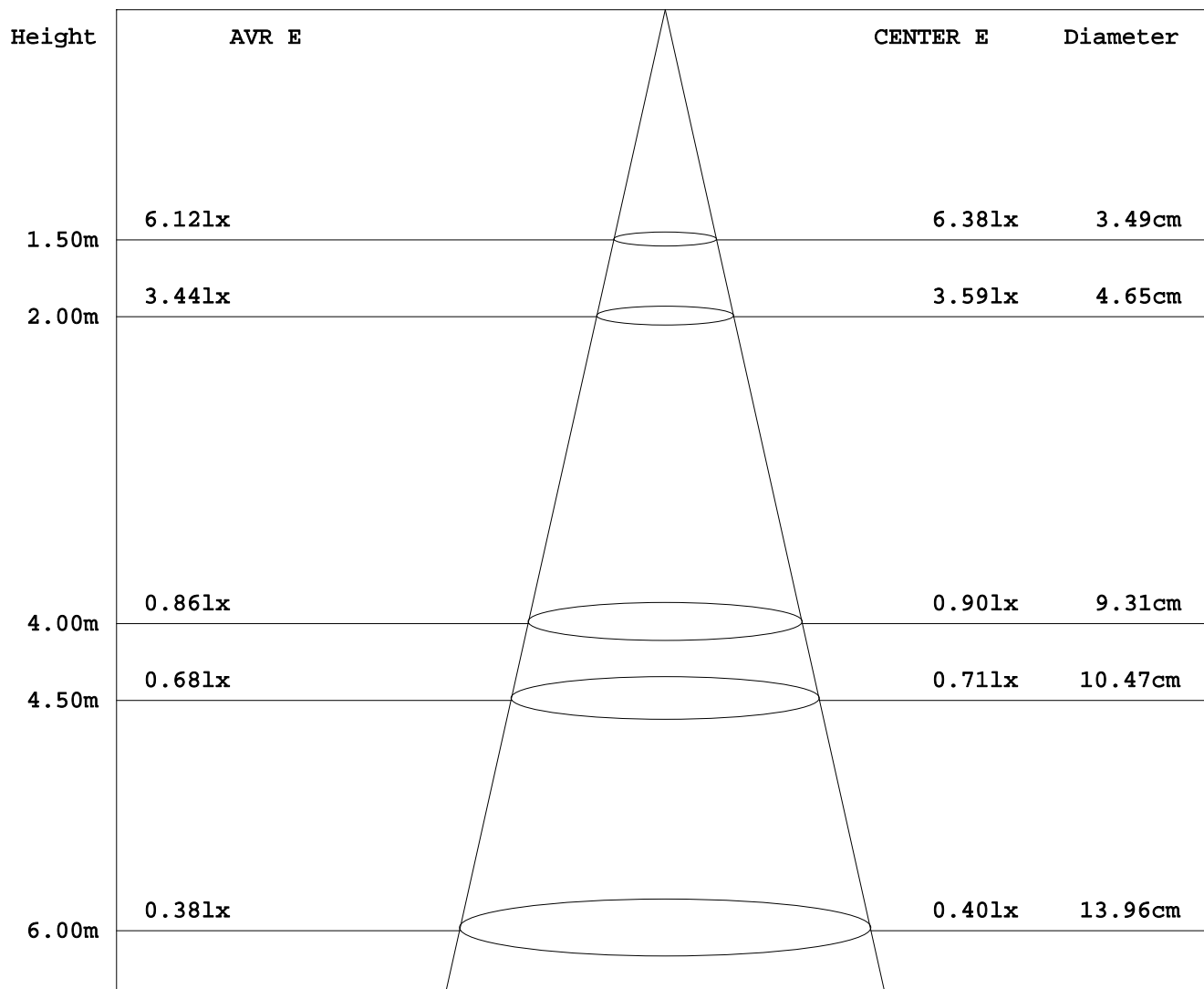
Test System:HOPOO HPG1800
Temperature:25.3DEG
Operators:
Test Date:2025年06月26日

Test Set: 7.0deg/s C-Gamma (TYPE C)
Humidity:65.0%
Test Distance:6.100 m
Remarks:

AVERAGE AND CENTER E Figure

Report number:

MANUFACTURER:			
Address:			
NAME:		TYPE:	WEIGHT:
SPECIFICATION:	CCT(K): 0	DIMENSION:	SERIAL No.:



Angle: 1.3deg

Test System: HOPOO HPG1800
 Temperature: 25.3DEG
 Operators:
 Test Date: 2025年06月26日

Test Set: 7.0deg/s C-Gamma (TYPE C)
 Humidity: 65.0%
 Test Distance: 6.100 m
 Remarks:

ZONAL FLUX DIAGRAM

Report number:

MANUFACTURER:			
Address:			
NAME:		TYPE:	
SPECIFICATION:		DIMENSION:	
CCT(K): 0		WEIGHT:	
		SERIAL No.:	

γ	C0	C45	C90	C135	C180	C225	C270	C315	γ	zone	total
10.0	14.13	13.09	12.68	12.93	13.87	14.47	14.13	13.65	0- 10	1.306	1.306
20.0	13.35	12.00	11.83	12.11	12.91	14.60	14.69	13.52	10- 20	3.783	5.089
30.0	12.31	10.84	10.82	11.05	11.72	14.30	15.03	13.15	20- 30	5.897	10.98
40.0	10.97	9.655	9.823	9.823	10.41	13.73	14.88	12.63	30- 40	7.496	18.48
50.0	9.153	8.446	8.744	8.483	8.632	12.74	14.36	11.88	40- 50	8.449	26.93
60.0	7.032	7.125	7.628	7.088	6.511	11.55	13.58	10.82	50- 60	8.670	35.60
70.0	4.688	5.786	6.511	5.711	4.241	10.08	12.53	9.507	60- 70	8.179	43.78
80.0	2.455	4.558	5.432	4.409	2.009	8.446	11.23	8.037	70- 80	7.144	50.92
90.0	0.819	3.479	4.539	3.460	0.447	6.790	9.823	6.493	80- 90	5.799	56.72
100.0	0.447	2.027	3.423	2.511	0.112	4.372	7.665	4.018	90-100	4.003	60.72
110.0	0.372	1.097	2.083	1.934	0.112	3.200	6.214	2.251	100-110	2.812	63.54
120.0	0.298	0.428	0.856	1.116	0.112	1.860	4.279	0.335	110-120	1.596	65.13
130.0	0.260	0.223	0.074	0.521	0.149	0.856	1.637	0.205	120-130	0.697	65.83
140.0	0.223	0.186	0.074	0.260	0.149	0.316	0.819	0.186	130-140	0.274	66.10
150.0	0.223	0.167	0.074	0.186	0.149	0.223	0.447	0.167	140-150	0.144	66.25
160.0	0.186	0.149	0.074	0.167	0.149	0.149	0.372	0.149	150-160	0.084	66.33
170.0	0.186	0.130	0.074	0.149	0.149	0.149	0.298	0.130	160-170	0.045	66.38
180.0	0.149	0.130	0.112	0.149	0.223	0.130	0.260	0.130	170-180	0.015	66.39
DEG	LUMINOUS INTENSITY:cd									UNIT:lm	

Test System:HOPOO HPG1800
 Temperature:25.3DEG
 Operators:
 Test Date:2025年06月26日

Test Set: 7.0deg/s C-Gamma (TYPE C)
 Humidity:65.0%
 Test Distance:6.100 m
 Remarks:

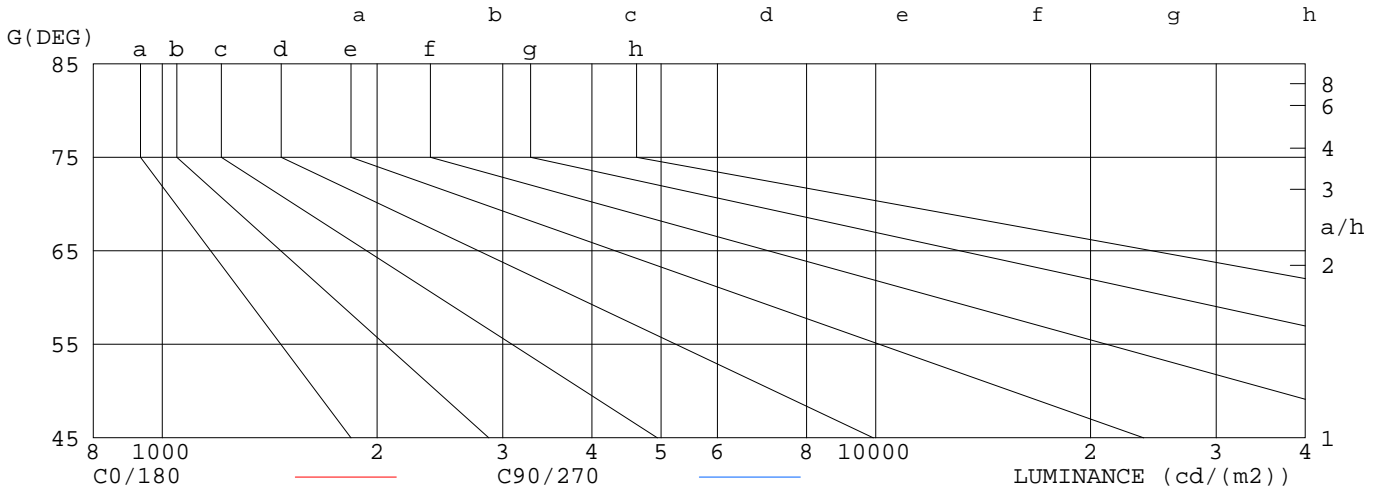
LUMINANCE LIMITATION CURVES

Report number:

MANUFACTURER:			
Address:			
NAME:		TYPE:	WEIGHT:
SPECIFICATION:	CCT(K): 0	DIMENSION:	SERIAL No.:

LUMINANCE LIMITATION CURVES

GLARE	CLASS	ILLUMINANCE (lx)							
		2000	1000	500	<=300				
1.15	A								
1.50	B		2000	1000	500	<=300			
1.85	C			2000	1000	500	<=300		
2.20	D				2000	1000	500	<=300	
2.55	E					2000	1000	500	<=300



LUMINANCE cd/m2

G (DEG)	C0/180	C90/270
85	175	564
80	141	313
75	137	230
70	137	190
65	138	167
60	141	153
55	141	143
50	142	136
45	143	132

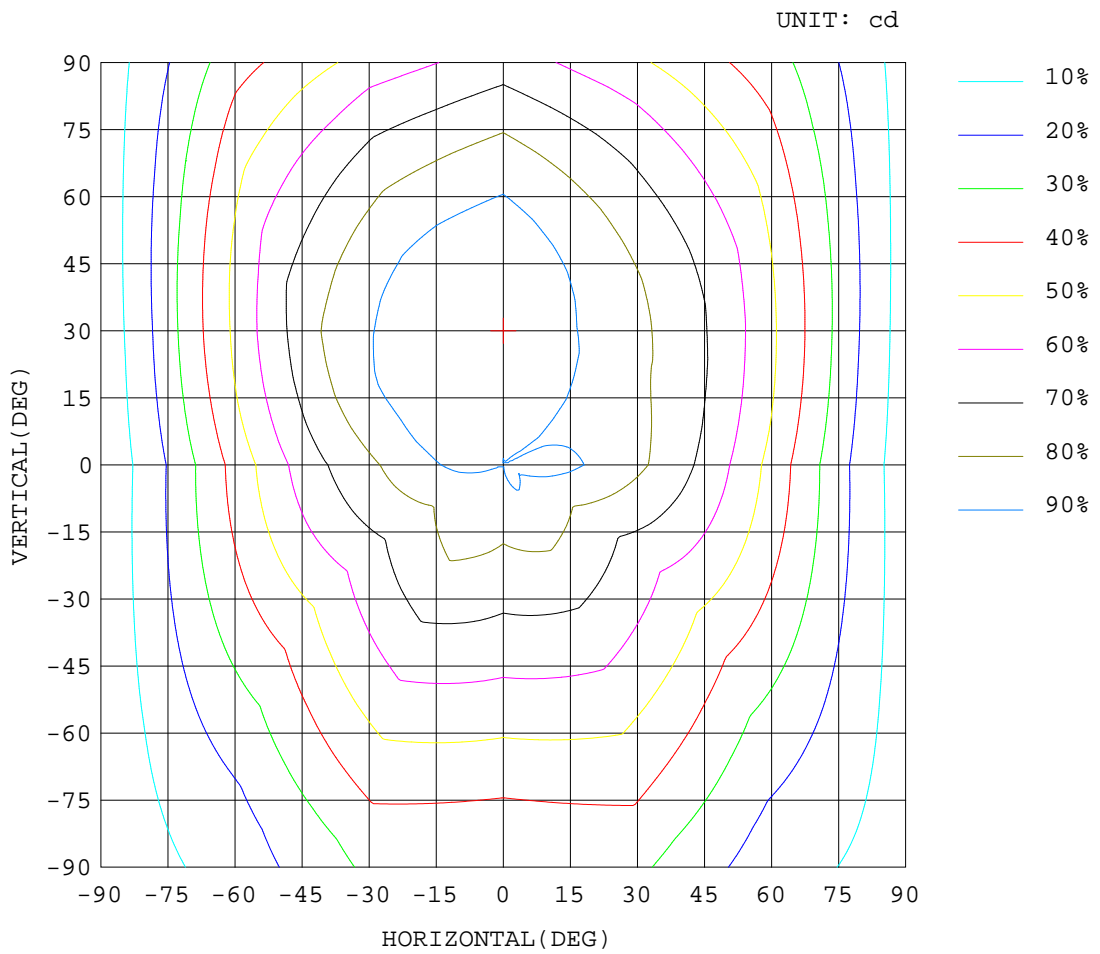
Test System: HOPOO HPG1800
 Temperature: 25.3 DEG
 Operators:
 Test Date: 2025年06月26日

Test Set: 7.0deg/s C-Gamma (TYPE C)
 Humidity: 65.0%
 Test Distance: 6.100 m
 Remarks:

ISOCANDELA DIAGRAM

Report number:

MANUFACTURER:			
Address:			
NAME:		TYPE:	WEIGHT:
SPECIFICATION:	CCT(K): 0	DIMENSION:	SERIAL No.:



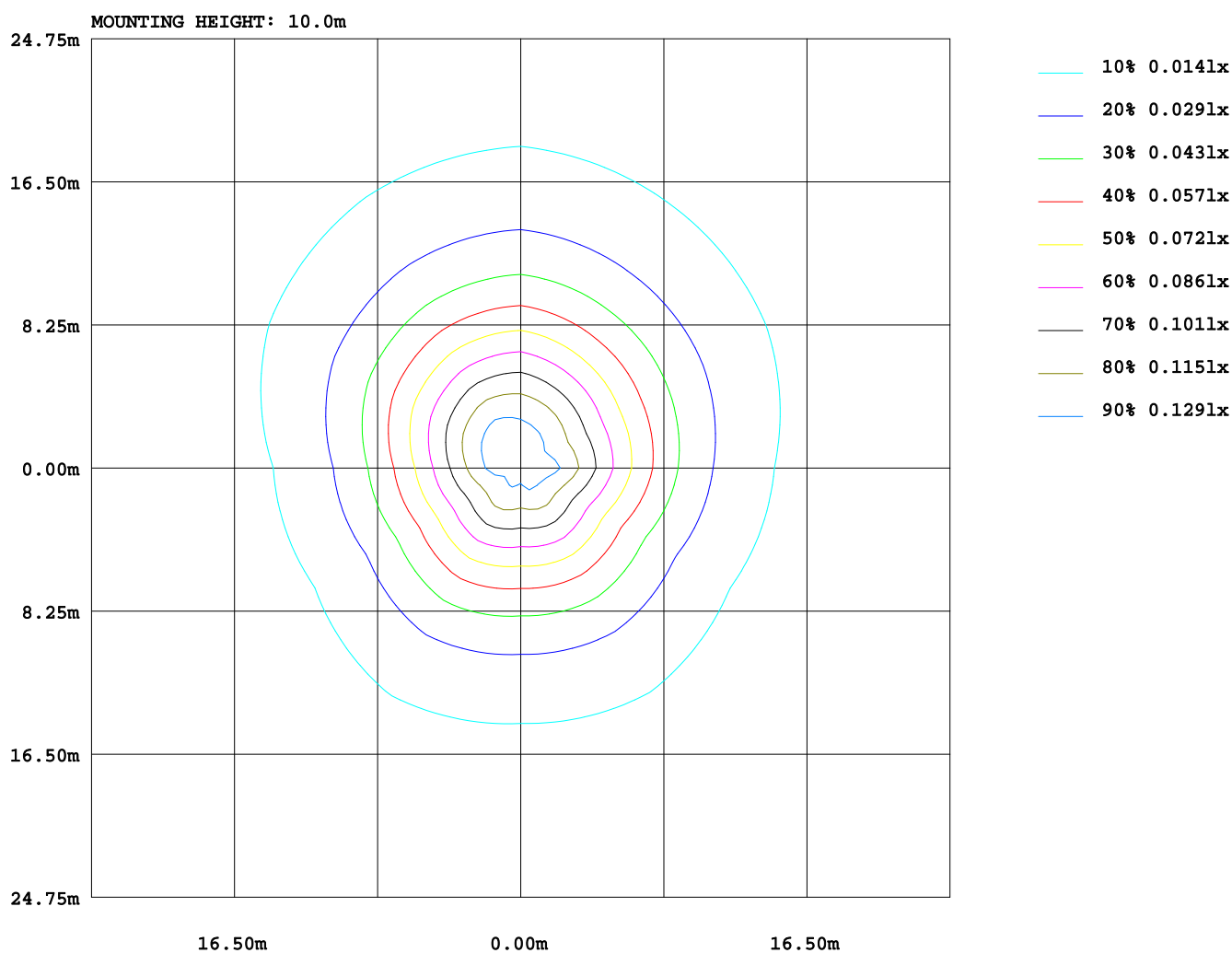
Test System: HOPOO HPG1800
 Temperature: 25.3 DEG
 Operators:
 Test Date: 2025年06月26日

Test Set: 7.0deg/s C-Gamma (TYPE C)
 Humidity: 65.0%
 Test Distance: 6.100 m
 Remarks:

ISOLUX DIAGRAM

Report number:

MANUFACTURER:			
Address:			
NAME:		TYPE:	WEIGHT:
SPECIFICATION:	CCT(K): 0	DIMENSION:	SERIAL No.:



Test System:HOPOO HPG1800
 Temperature:25.3DEG
 Operators:
 Test Date:2025年06月26日

Test Set: 7.0deg/s C-Gamma (TYPE C)
 Humidity:65.0%
 Test Distance:6.100 m
 Remarks:

AREA LUMINOUS FLUX

Report number:

MANUFACTURER:																		
Address:																		
NAME:									TYPE:						WEIGHT:			
SPECIFICATION:					CCT(K): 0				DIMENSION:						SERIAL No.:			

VERTICAL(DEG)	AREA FLUX DIAGRAM																	UNIT:lm	Φ t	Φ a
	90	80	70	60	50	40	30	20	10	0	10	20	30	40	50	60	70	80	90	
90	0.00	0.03	0.06	0.11	0.16	0.21	0.25	0.29	0.31	0.31	0.28	0.24	0.20	0.15	0.11	0.06	0.03	0.00	2.80	2.61
80	0.00	0.03	0.07	0.13	0.18	0.24	0.29	0.33	0.35	0.35	0.32	0.28	0.23	0.17	0.12	0.07	0.03	0.01	3.19	2.98
70	0.00	0.03	0.08	0.14	0.20	0.27	0.32	0.36	0.39	0.39	0.35	0.30	0.25	0.19	0.13	0.08	0.03	0.01	3.52	3.30
60	0.01	0.03	0.08	0.15	0.22	0.29	0.35	0.39	0.42	0.41	0.38	0.33	0.27	0.21	0.14	0.08	0.03	0.01	3.79	3.55
50	0.01	0.03	0.08	0.16	0.23	0.31	0.37	0.41	0.44	0.43	0.39	0.34	0.28	0.22	0.15	0.08	0.03	0.01	3.98	3.74
40	0.00	0.03	0.09	0.16	0.24	0.32	0.38	0.43	0.45	0.44	0.40	0.35	0.29	0.23	0.15	0.09	0.03	0.01	4.09	3.84
30	0.00	0.03	0.08	0.16	0.24	0.32	0.38	0.43	0.45	0.44	0.40	0.35	0.30	0.23	0.15	0.09	0.03	0.01	4.09	3.85
20	0.00	0.03	0.08	0.15	0.23	0.31	0.38	0.43	0.45	0.43	0.40	0.35	0.29	0.23	0.15	0.08	0.03	0.01	4.01	3.78
10	0.00	0.03	0.07	0.14	0.22	0.29	0.35	0.41	0.43	0.42	0.39	0.35	0.29	0.22	0.15	0.08	0.03	0.01	3.88	3.66
0	0.00	0.03	0.07	0.13	0.20	0.27	0.33	0.37	0.40	0.41	0.38	0.34	0.28	0.21	0.14	0.08	0.03	0.00	3.65	3.44
-10	0.00	0.03	0.07	0.12	0.19	0.25	0.30	0.35	0.38	0.38	0.35	0.30	0.25	0.19	0.13	0.07	0.03	0.00	3.39	3.19
-20	0.00	0.02	0.06	0.11	0.17	0.23	0.29	0.34	0.35	0.35	0.33	0.28	0.23	0.18	0.12	0.07	0.03	0.00	3.14	2.95
-30	0.00	0.02	0.06	0.10	0.15	0.21	0.27	0.31	0.32	0.31	0.30	0.26	0.21	0.16	0.11	0.06	0.03	0.00	2.89	2.71
-40	0.00	0.02	0.05	0.09	0.14	0.20	0.25	0.28	0.28	0.28	0.27	0.24	0.20	0.14	0.09	0.05	0.02	0.00	2.62	2.46
-50	0.00	0.02	0.04	0.08	0.12	0.18	0.22	0.24	0.25	0.25	0.24	0.22	0.18	0.13	0.08	0.05	0.02	0.00	2.33	2.19
-60	0.00	0.02	0.04	0.07	0.11	0.16	0.20	0.21	0.22	0.22	0.21	0.19	0.16	0.11	0.07	0.04	0.02	0.00	2.04	1.92
-70	0.00	0.01	0.03	0.06	0.09	0.14	0.17	0.18	0.18	0.18	0.18	0.17	0.14	0.10	0.06	0.03	0.02	0.00	1.74	1.64
-80	0.00	0.01	0.03	0.05	0.08	0.12	0.14	0.15	0.15	0.15	0.15	0.14	0.12	0.08	0.05	0.03	0.01	0.00	1.46	1.38
-90	0.00	0.01	0.03	0.05	0.08	0.12	0.14	0.15	0.15	0.15	0.15	0.14	0.12	0.08	0.05	0.03	0.01	0.00	1.46	1.38
	-90	-80	-70	-60	-50	-40	-30	-20	HORIZONTAL(DEG)				20	30	40	50	60	70	80	90
Φ t	0.07	0.44	1.14	2.10	3.18	4.27	5.24	5.91	6.22	6.13	5.71	5.05	4.16	3.14	2.11	1.18	0.48	0.09	66	
Φ a	0.00	0.00	0.00	2.10	3.18	4.27	5.24	5.91	6.22	6.13	5.71	5.05	4.16	3.14	2.11	0.00	0.00	0.00		36

Test System:HOPOO HPG1800
 Temperature:25.3DEG
 Operators:
 Test Date:2025年06月26日

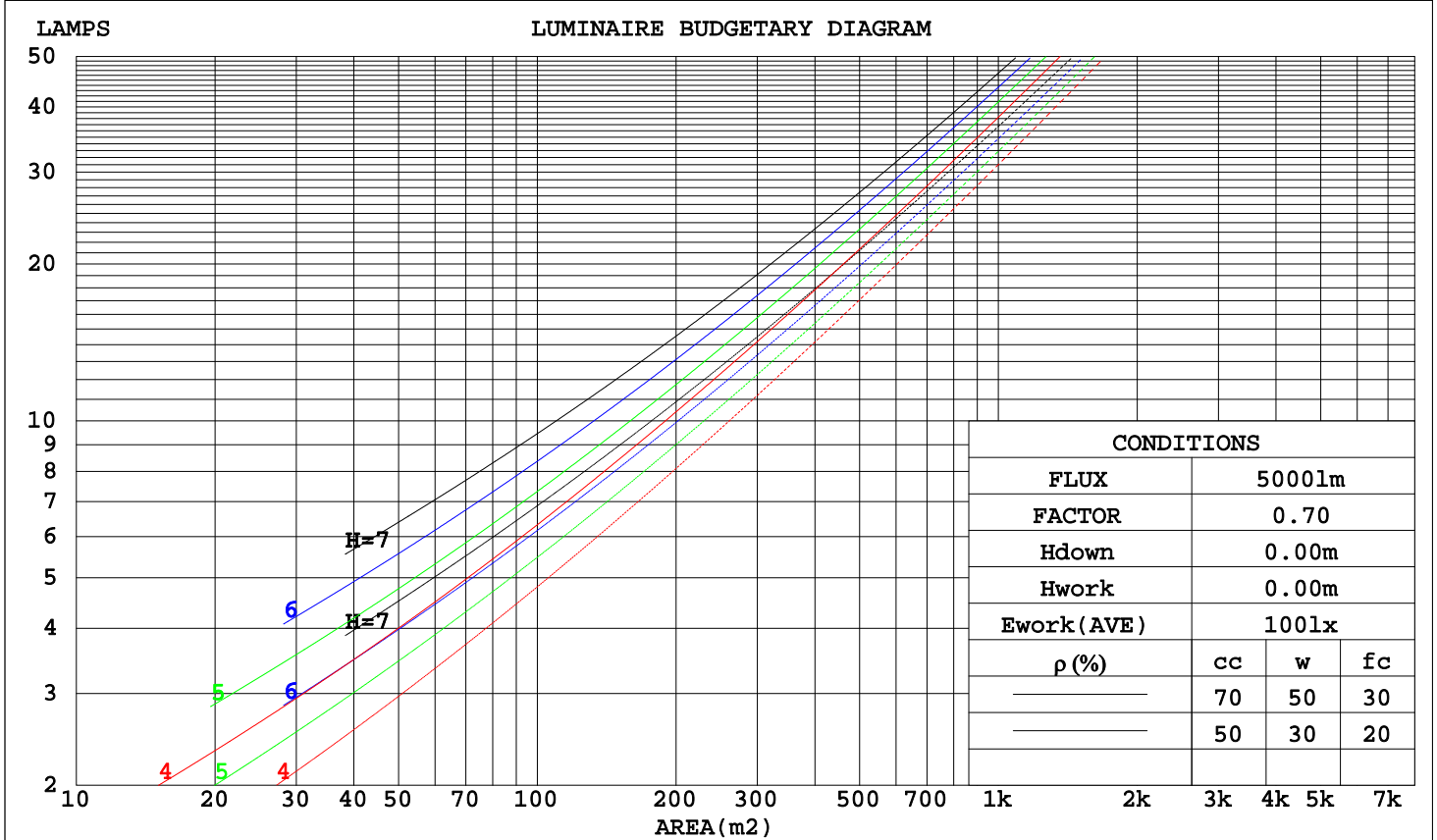
Test Set: 7.0deg/s C-Gamma (TYPE C)
 Humidity:65.0%
 Test Distance:6.100 m
 Remarks:

CU AND LUMINAIRE BUDGETARY ESTIMATE DIAGRAM

Report number:

MANUFACTURER:															
Address:															
NAME:								TYPE:				WEIGHT:			
SPECIFICATION:				CCT(K): 0				DIMENSION:				SERIAL No.:			

ρ_{cc}	80%			70%			50%			30%			10%			0
ρ_w	50%	30%	10%	50%	30%	10%	50%	30%	10%	50%	30%	10%	50%	30%	10%	0
ρ_{fc}	20%			20%			20%			20%			20%			0
RCR	RCR:Room Cavity Ratio						Coefficients of Utilization(CU)									
0.0	1.16	1.16	1.16	1.11	1.11	1.11	1.03	1.03	1.03	.96	.96	.96	.89	.89	.89	.85
1.0	.95	.90	.85	.92	.86	.82	.84	.80	.77	.78	.75	.72	.72	.69	.67	.64
2.0	.81	.73	.66	.78	.70	.64	.72	.66	.60	.66	.61	.57	.61	.57	.53	.50
3.0	.70	.61	.53	.67	.59	.52	.62	.55	.49	.57	.51	.46	.53	.48	.44	.41
4.0	.61	.52	.44	.59	.50	.43	.55	.47	.41	.50	.44	.39	.47	.41	.37	.34
5.0	.54	.45	.37	.52	.43	.36	.48	.41	.35	.45	.38	.33	.42	.36	.31	.29
6.0	.49	.39	.32	.47	.38	.31	.43	.36	.30	.40	.34	.28	.37	.32	.27	.25
7.0	.44	.34	.28	.42	.34	.27	.39	.32	.26	.37	.30	.25	.34	.28	.24	.21
8.0	.40	.31	.25	.38	.30	.24	.36	.28	.23	.33	.27	.22	.31	.25	.21	.19
9.0	.36	.28	.22	.35	.27	.22	.33	.26	.21	.31	.24	.20	.29	.23	.19	.17
10.0	.33	.25	.20	.32	.25	.19	.30	.23	.19	.28	.22	.18	.27	.21	.17	.15



Test System:HOPOO HPG1800
 Temperature:25.3DEG
 Operators:
 Test Date:2025年06月26日

Test Set: 7.0deg/s C-Gamma (TYPE C)
 Humidity:65.0%
 Test Distance:6.100 m
 Remarks:

WEC AND CCEC

Report number:

MANUFACTURER:															
Address:															
NAME:								TYPE:				WEIGHT:			
SPECIFICATION:				CCT(K): 0				DIMENSION:				SERIAL No.:			

ρ_{cc}	80%			70%			50%			30%			10%			0
ρ_w	50%	30%	10%	50%	30%	10%	50%	30%	10%	50%	30%	10%	50%	30%	10%	0
ρ_{fc}	20%			20%			20%			20%			20%			0
RCR	RCR:Room Cavity Ratio						Wall Exitance Coefficients(WEC)									
0.0																
1.0	.407	.231	.073	.395	.225	.072	.373	.214	.068	.353	.203	.065	.334	.194	.062	
2.0	.348	.191	.059	.337	.186	.057	.318	.177	.055	.299	.168	.053	.282	.160	.050	
3.0	.307	.163	.049	.298	.159	.048	.280	.152	.046	.263	.144	.044	.248	.137	.042	
4.0	.275	.143	.042	.266	.139	.041	.250	.133	.040	.235	.126	.038	.221	.120	.037	
5.0	.249	.127	.037	.241	.124	.036	.227	.118	.035	.213	.112	.033	.200	.107	.032	
6.0	.228	.114	.033	.221	.111	.032	.207	.106	.031	.195	.101	.030	.183	.096	.029	
7.0	.209	.104	.029	.203	.101	.029	.191	.096	.028	.179	.092	.027	.169	.088	.026	
8.0	.194	.095	.027	.188	.093	.026	.177	.088	.025	.166	.084	.024	.157	.080	.023	
9.0	.180	.087	.024	.175	.085	.024	.165	.081	.023	.155	.078	.022	.146	.074	.021	
10.0	.169	.081	.022	.164	.079	.022	.154	.076	.021	.145	.072	.021	.137	.069	.020	

ρ_{cc}	80%			70%			50%			30%			10%			0
ρ_w	50%	30%	10%	50%	30%	10%	50%	30%	10%	50%	30%	10%	50%	30%	10%	0
ρ_{fc}	20%			20%			20%			20%			20%			0
RCR	RCR:Room Cavity Ratio						Ceiling Cavity Exitance Coefficients(CCEC)									
0.0																
1.0	.299	.267	.239	.256	.229	.205	.175	.158	.142	.101	.091	.083	.032	.029	.027	
2.0	.292	.244	.204	.250	.210	.176	.172	.145	.123	.099	.085	.072	.032	.027	.023	
3.0	.285	.228	.182	.244	.197	.158	.168	.137	.111	.097	.080	.065	.031	.026	.021	
4.0	.277	.215	.168	.238	.186	.146	.163	.130	.103	.095	.076	.061	.030	.025	.020	
5.0	.269	.205	.159	.231	.178	.138	.159	.124	.097	.092	.073	.058	.030	.024	.019	
6.0	.261	.198	.152	.225	.171	.132	.155	.120	.093	.090	.070	.056	.029	.023	.018	
7.0	.254	.191	.147	.219	.165	.128	.151	.116	.090	.088	.068	.054	.028	.022	.018	
8.0	.247	.185	.143	.213	.161	.124	.147	.113	.088	.086	.067	.053	.028	.022	.017	
9.0	.241	.180	.140	.208	.157	.122	.144	.110	.086	.084	.065	.052	.027	.021	.017	
10.0	.235	.176	.137	.202	.153	.120	.140	.108	.085	.082	.064	.051	.027	.021	.017	

Test System:HOPOO HPG1800
 Temperature:25.3DEG
 Operators:
 Test Date:2025年06月26日

Test Set: 7.0deg/s C-Gamma (TYPE C)
 Humidity:65.0%
 Test Distance:6.100 m
 Remarks:

UGR Table

Report number:

MANUFACTURER:											
Address:											
NAME:					TYPE:			WEIGHT:			
SPECIFICATION:		CCT(K): 0			DIMENSION:			SERIAL No.:			
ceiling/cavity		0.7	0.7	0.5	0.5	0.3	0.7	0.7	0.5	0.5	0.3
walls		0.5	0.3	0.5	0.3	0.3	0.5	0.3	0.5	0.3	0.3
working plane		0.2	0.2	0.2	0.2	0.2	0.2	0.2	0.2	0.2	0.2
Room dimensions		Viewed crosswise					Viewed endwise				
x = 2H y = 2H		4.0	5.4	4.5	5.9	6.4	4.8	6.3	5.3	6.7	7.2
	3H	5.8	7.2	6.3	7.7	8.2	7.3	8.7	7.8	9.2	9.7
	4H	6.7	7.9	7.2	8.4	9.0	8.7	10.0	9.2	10.5	11.1
	6H	7.4	8.6	7.9	9.1	9.7	10.2	11.4	10.7	11.9	12.5
	8H	7.7	8.8	8.2	9.4	10.0	11.0	12.2	11.6	12.7	13.3
	12H	7.9	9.1	8.5	9.6	10.2	12.0	13.1	12.5	13.7	14.3
	4H 2H	4.8	6.1	5.3	6.6	7.2	5.5	6.8	6.0	7.3	7.8
	3H	6.8	7.9	7.4	8.5	9.1	8.3	9.4	8.9	10.0	10.6
	4H	7.8	8.8	8.4	9.4	10.0	9.9	10.9	10.5	11.5	12.2
	6H	8.7	9.6	9.3	10.2	10.9	11.6	12.6	12.2	13.2	13.8
	8H	9.1	9.9	9.7	10.6	11.3	12.5	13.4	13.2	14.0	14.7
	12H	9.5	10.3	10.1	10.9	11.6	13.6	14.4	14.3	15.1	15.8
	8H 4H	8.6	9.5	9.2	10.1	10.8	10.3	11.2	10.9	11.8	12.5
	6H	9.7	10.5	10.4	11.1	11.9	12.4	13.2	13.1	13.8	14.5
	8H	10.3	11.0	11.0	11.6	12.4	13.6	14.3	14.2	14.9	15.7
	12H	10.9	11.5	11.6	12.1	12.9	15.0	15.6	15.6	16.2	17.0
	12H 4H	8.9	9.7	9.5	10.3	11.0	10.4	11.2	11.0	11.8	12.5
	6H	10.2	10.9	10.9	11.5	12.3	12.6	13.2	13.2	13.9	14.6
	8H	10.9	11.5	11.6	12.1	12.9	13.9	14.5	14.5	15.1	15.9
Variations with the observer position at spacings:											
S = 1.0H		+ 0.1 / - 0.1					+ 0.1 / - 0.1				
1.5H		+ 0.1 / - 0.2					+ 0.2 / - 0.3				
2.0H		+ 0.1 / - 0.2					+ 0.3 / - 0.4				

CIE Pub.117 Corrected 66.39 lm Total Lamp Luminous Flux. (8log(F/F0) = -9.4)

Test System:HOPOO HPG1800
 Temperature:25.3DEG
 Operators:
 Test Date:2025年06月26日

Test Set: 7.0deg/s C-Gamma (TYPE C)
 Humidity:65.0%
 Test Distance:6.100 m
 Remarks:

UTILIZATION FACTORS TABLE

Report number:

MANUFACTURER:					
Address:					
NAME:		TYPE:		WEIGHT:	
SPECIFICATION:	CCT(K): 0	DIMENSION:		SERIAL No.:	

REFLECTANCE										
Ceiling	0.8	0.8	0.8	0.7	0.7	0.7	0.5	0.5	0.5	0
Walls	0.7	0.5	0.3	0.7	0.5	0.3	0.7	0.5	0.3	0
Working plane	0.2	0.2	0.2	0.2	0.2	0.2	0.2	0.2	0.2	0
ROOM INDEX	UTILIZATION FACTORS(PERCENT) $k(RI) \times RCR = 5$									
$k = 0.60$	47	35	27	46	34	27	45	34	27	20
0.80	56	43	35	55	43	35	53	41	34	26
1.00	64	51	42	62	50	42	59	51	41	32
1.25	71	58	49	69	57	49	65	55	47	38
1.50	76	64	55	74	62	54	69	59	52	42
2.00	84	72	64	81	70	62	76	67	60	49
2.50	88	78	69	85	75	68	79	71	65	53
3.00	92	82	75	89	80	73	83	75	69	57
4.00	97	89	82	93	86	80	87	81	75	62
5.00	100	93	87	96	90	84	89	84	79	65
ROOM INDEX	UF(total)									Direct
According to DIN EN 13032-2 2004				Suspended				SHRNOM = 1.25		

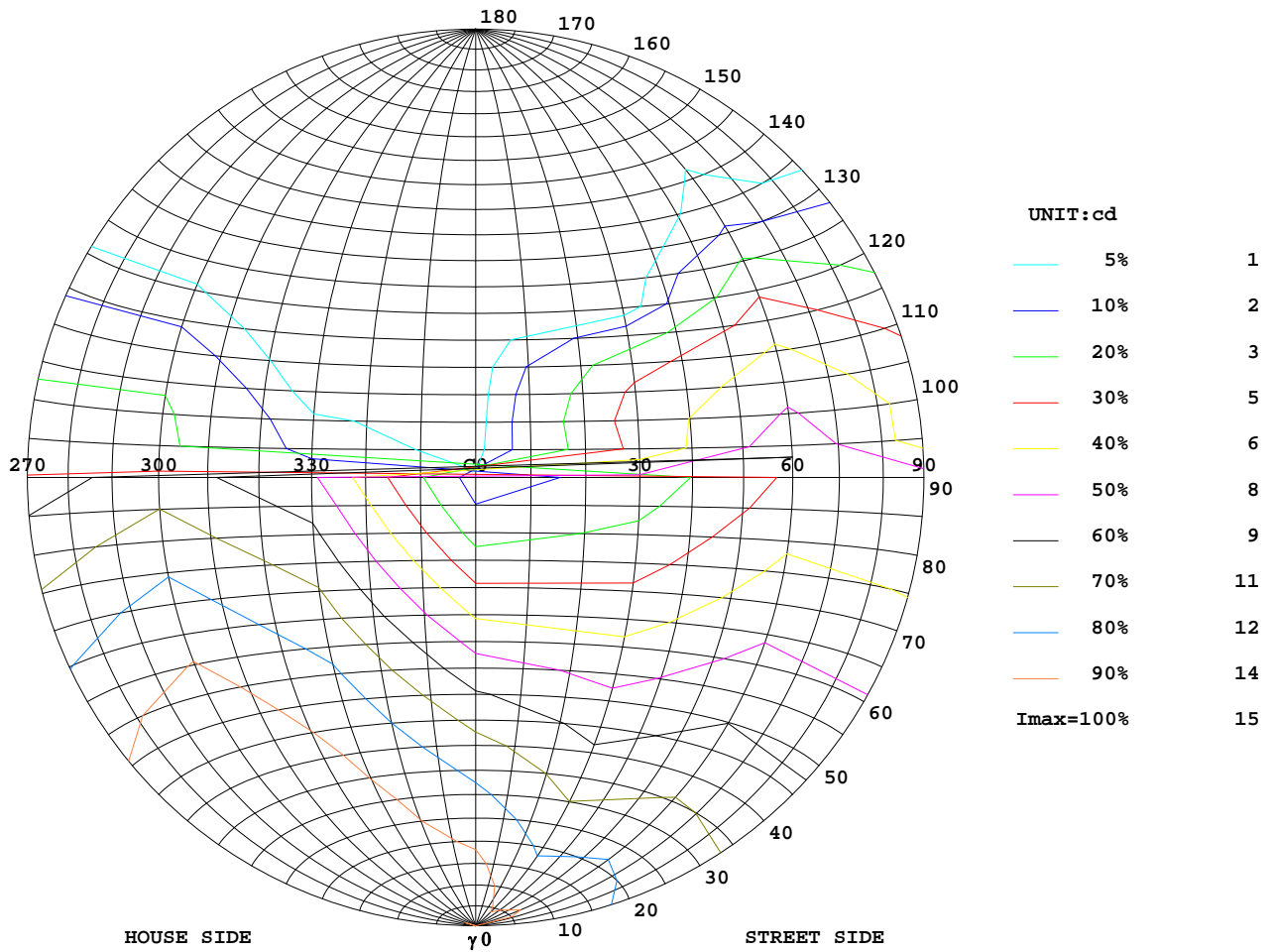
Test System:HOPOO HPG1800
 Temperature:25.3DEG
 Operators:
 Test Date:2025年06月26日

Test Set: 7.0deg/s C-Gamma (TYPE C)
 Humidity:65.0%
 Test Distance:6.100 m
 Remarks:

ISOCANDELA DIAGRAM

Report number:

MANUFACTURER:			
Address:			
NAME:		TYPE:	WEIGHT:
SPECIFICATION:	CCT(K): 0	DIMENSION:	SERIAL No.:



Test System: HOPOO HPG1800
 Temperature: 25.3 DEG
 Operators:
 Test Date: 2025年06月26日

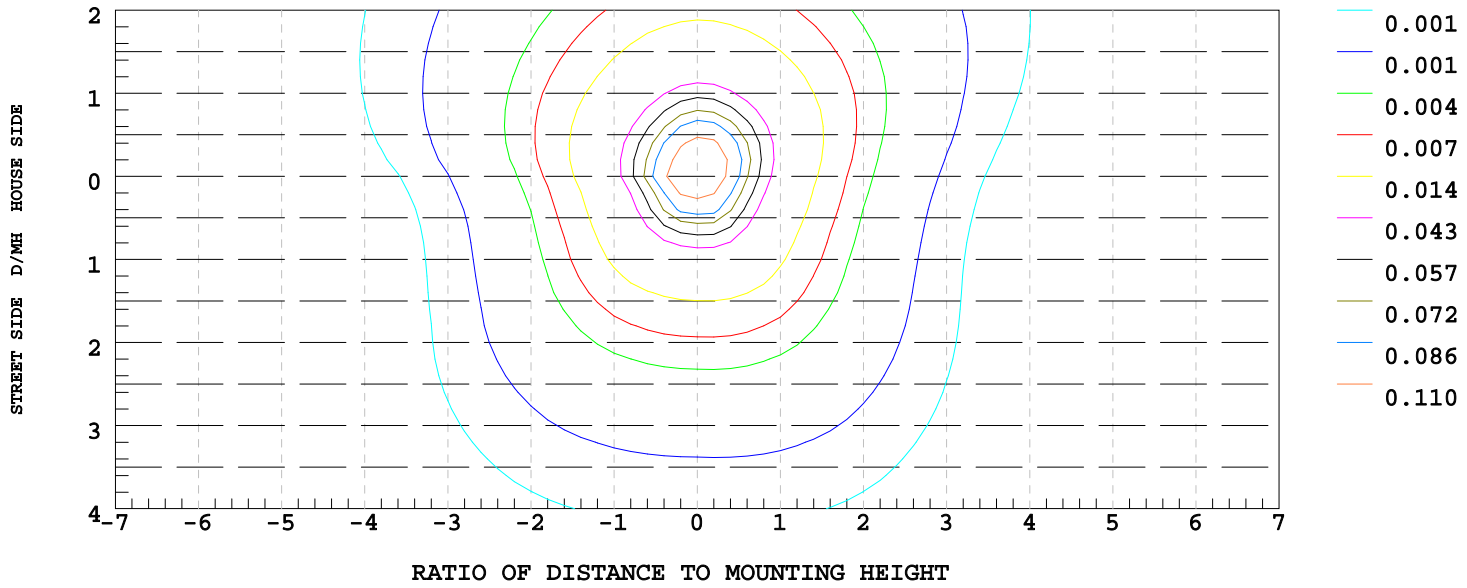
Test Set: 7.0deg/s C-Gamma (TYPE C)
 Humidity: 65.0%
 Test Distance: 6.100 m
 Remarks:

ISOLUX DIAGRAM

Report number:

MANUFACTURER:			
Address:			
NAME:		TYPE:	WEIGHT:
SPECIFICATION:	CCT(K): 0	DIMENSION:	SERIAL No.:

ILLUMINANCE AT MH=10 m, Enadir = 0.14 lx



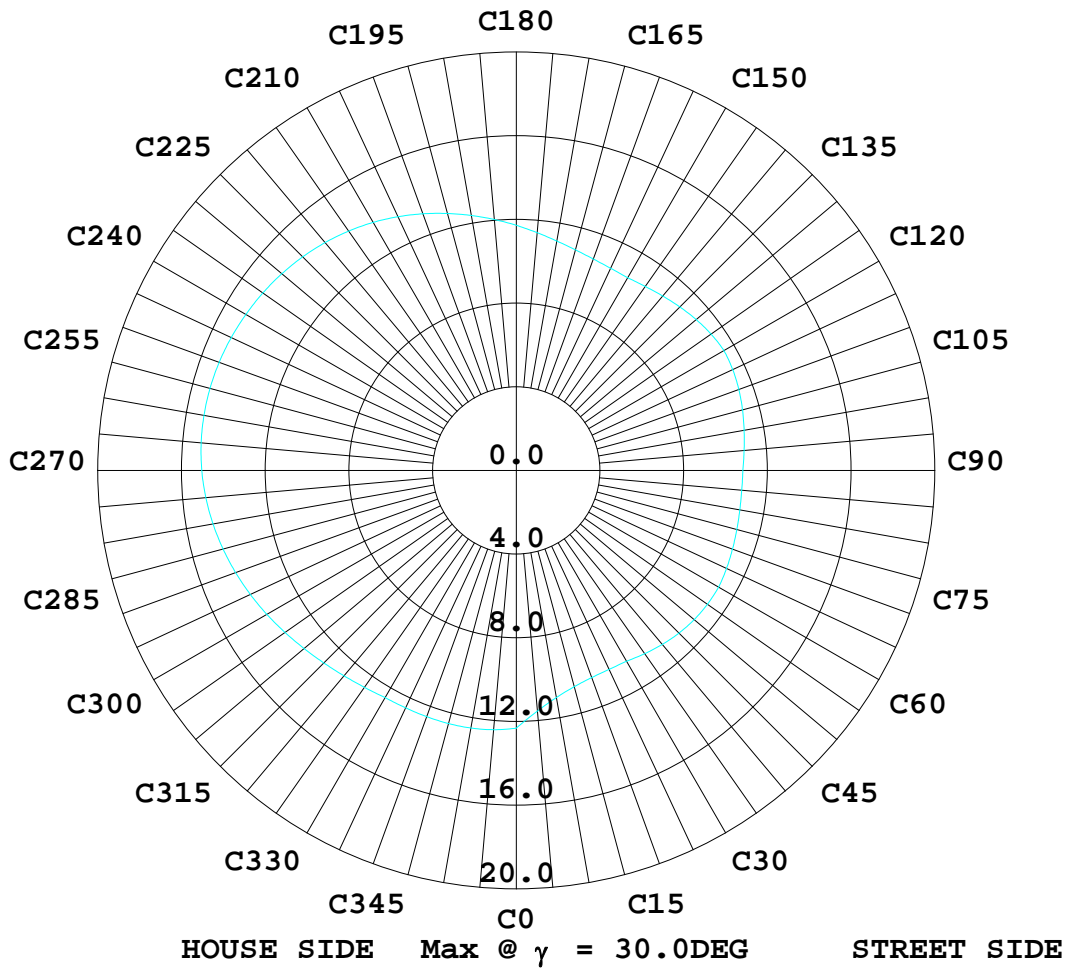
Test System: HOPOO HPG1800
 Temperature: 25.3 DEG
 Operators:
 Test Date: 2025年06月26日

Test Set: 7.0deg/s C-Gamma (TYPE C)
 Humidity: 65.0%
 Test Distance: 6.100 m
 Remarks:

ISOCANDELA DIAGRAM

Report number:

MANUFACTURER:			
Address:			
NAME:		TYPE:	WEIGHT:
SPECIFICATION:	CCT(K): 0	DIMENSION:	SERIAL No.:



Test System:HOPOO HPG1800
 Temperature:25.3DEG
 Operators:
 Test Date:2025年06月26日

Test Set: 7.0deg/s C-Gamma (TYPE C)
 Humidity:65.0%
 Test Distance:6.100 m
 Remarks:

LUMINOUS DISTRIBUTION INTENSITY DATA

Report number:

MANUFACTURER:			
Address:			
NAME:		TYPE:	WEIGHT:
SPECIFICATION:	CCT(K): 0	DIMENSION:	SERIAL No.:

UNIT: cd

γ (DEG)	C (DEG)											
	0	30	60	90	120	150	180	210	240	270	300	330
0.0	14.3	13.8	14.1	13.4	13.5	13.3	14.3	13.8	14.1	13.4	13.5	13.3
5.0	14.3	13.4	13.6	13.0	13.3	13.0	14.2	14.1	14.4	13.7	13.7	13.4
10.0	14.1	12.9	13.2	12.6	13.0	12.7	13.8	14.2	14.6	14.1	13.9	13.3
15.0	13.8	12.3	12.6	12.2	12.8	12.3	13.4	14.3	14.8	14.4	13.9	13.2
20.0	13.3	11.7	12.2	11.8	12.3	11.8	12.9	14.2	14.9	14.6	13.9	13.0
25.0	12.8	11.1	11.7	11.3	11.9	11.3	12.3	13.9	14.9	14.8	13.8	12.8
30.0	12.3	10.5	11.1	10.8	11.4	10.6	11.7	13.6	14.9	15.0	13.7	12.5
35.0	11.7	9.89	10.6	10.3	10.9	9.97	11.0	13.3	14.7	15.0	13.5	12.2
40.0	10.9	9.22	10.0	9.82	10.4	9.22	10.4	12.9	14.4	14.8	13.2	11.9
45.0	10.1	8.55	9.52	9.30	9.86	8.44	9.60	12.4	14.1	14.6	12.9	11.5
50.0	9.15	7.88	9.00	8.74	9.26	7.70	8.63	11.9	13.5	14.3	12.6	11.1
55.0	8.11	7.10	8.44	8.18	8.70	6.84	7.59	11.2	13.2	14.0	12.2	10.5
60.0	7.03	6.32	7.92	7.62	8.11	6.06	6.51	10.4	12.6	13.5	11.7	9.93
65.0	5.84	5.46	7.36	7.06	7.47	5.24	5.35	9.63	11.9	13.0	11.1	9.19
70.0	4.68	4.72	6.84	6.51	6.92	4.50	4.24	8.85	11.3	12.5	10.6	8.40
75.0	3.53	3.98	6.32	5.95	6.32	3.75	3.08	8.00	10.6	11.9	9.97	7.59
80.0	2.45	3.31	5.80	5.43	5.73	3.08	2.00	7.10	9.78	11.2	9.30	6.77
85.0	1.52	2.67	5.24	4.91	5.17	2.49	1.11	6.28	9.04	10.5	8.59	5.95
90.0	0.82	2.15	4.80	4.53	4.80	2.12	0.45	5.43	8.14	9.82	7.77	5.20
95.0	0.52	1.15	3.31	4.01	3.31	1.41	0.15	4.46	5.28	8.55	4.94	4.09
100.0	0.45	0.86	3.20	3.42	3.68	1.33	0.11	3.23	5.50	7.66	5.20	2.82
105.0	0.41	0.37	2.86	2.64	3.31	1.19	0.11	2.82	4.98	6.95	4.80	1.63
110.0	0.37	0.11	2.08	2.08	2.90	0.97	0.11	2.12	4.27	6.21	3.90	0.60
115.0	0.33	0.04	1.33	1.33	2.49	0.56	0.11	1.60	3.34	5.28	2.15	0.48
120.0	0.30	0.04	0.82	0.86	1.78	0.45	0.11	1.15	2.56	4.27	0.22	0.45
125.0	0.30	0.07	0.48	0.33	1.19	0.37	0.11	0.82	1.89	3.12	0.07	0.37
130.0	0.26	0.07	0.37	0.07	0.74	0.30	0.15	0.52	1.19	1.63	0.07	0.33
135.0	0.26	0.07	0.33	0.07	0.52	0.22	0.15	0.41	0.52	1.04	0.07	0.30
140.0	0.22	0.07	0.30	0.07	0.41	0.11	0.15	0.37	0.26	0.82	0.07	0.30
145.0	0.22	0.07	0.30	0.07	0.33	0.07	0.15	0.33	0.19	0.63	0.07	0.26
150.0	0.22	0.07	0.26	0.07	0.30	0.07	0.15	0.30	0.15	0.45	0.07	0.26
155.0	0.19	0.07	0.26	0.07	0.26	0.07	0.15	0.26	0.11	0.41	0.07	0.22
160.0	0.19	0.07	0.22	0.07	0.26	0.07	0.15	0.22	0.07	0.37	0.07	0.22
165.0	0.19	0.07	0.22	0.07	0.22	0.07	0.15	0.22	0.07	0.33	0.07	0.19
170.0	0.19	0.07	0.19	0.07	0.22	0.07	0.15	0.22	0.07	0.30	0.07	0.19
175.0	0.19	0.07	0.19	0.07	0.22	0.07	0.19	0.19	0.07	0.30	0.07	0.19
180.0	0.15	0.07	0.19	0.11	0.19	0.11	0.22	0.19	0.07	0.26	0.11	0.15

Test System:HOPOO HPG1800
 Temperature:25.3DEG
 Operators:
 Test Date:2025年06月26日

Test Set: 7.0deg/s C-Gamma (TYPE C)
 Humidity:65.0%
 Test Distance:6.100 m
 Remarks: