

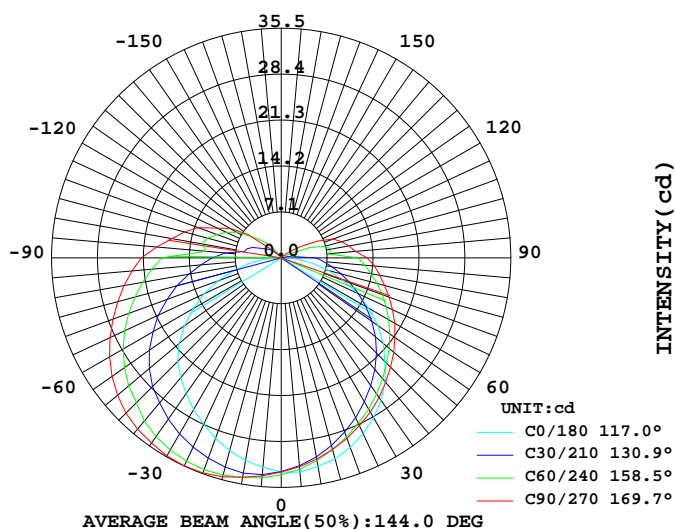
LUMINAIRE PHOTOMETRIC TEST REPORT

Report number:

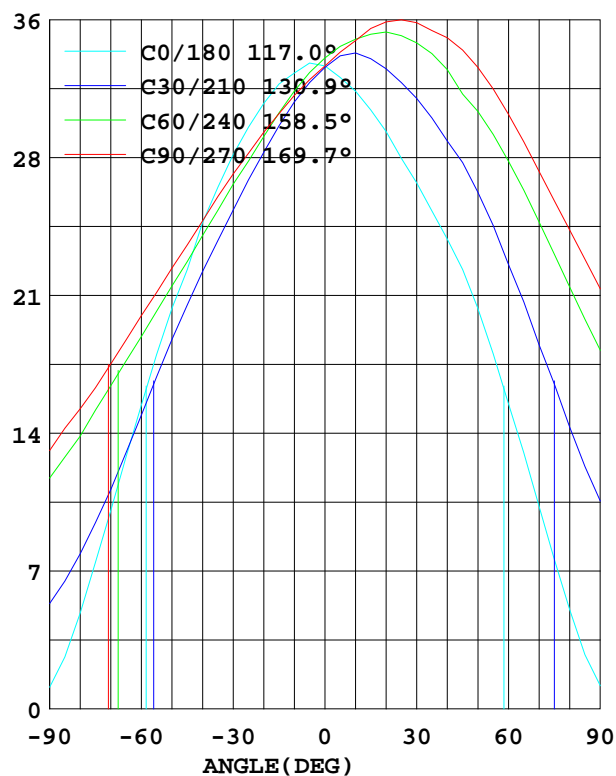
MANUFACTURER:			
Address:			
NAME:		TYPE:	WEIGHT:
SPECIFICATION:	CCT(K): 0	DIMENSION:	SERIAL No.:

DATA OF LAMP		I _{max} (cd)	35.53	S/MH(C0/180)	1.28
MODEL		EFFICIENCY(%)	100.0	S/MH(C90/270)	1.25
NOMINAL POWER(W)	6	TOTAL FLUX(lm)	158.10	Voltage(V)	24.32
RATED VOLTAGE(V)	24	EFFICIENCY(lm/W)	27.4	Current(A)	0.237
NOMINAL FLUX(lm)	158.1	η up(%)	14.5	Power(W)	5.780
LAMPS QUANTITY	1	η down(%)	85.5	Power Factor(PF)	1.000
TEST VOLTAGE(V)	24.3	Effective Flux(lm)	85.2	EEL	0.470

LUMINOUS INTENSITY DISTRIBUTION



LUMINOUS INTENSITY DISTRIBUTION



Test System:HOPOO HPG1800
 Temperature:25.3DEG
 Operators:
 Test Date:2025年06月26日

Test Set: 7.0deg/s C-Gamma (TYPE C)
 Humidity:65.0%
 Test Distance:6.100 m
 Remarks:

Color Temperature Data List

Report number:

MANUFACTURER:			
Address:			
NAME:		TYPE:	WEIGHT:
SPECIFICATION:	CCT(K): 0	DIMENSION:	SERIAL No.:

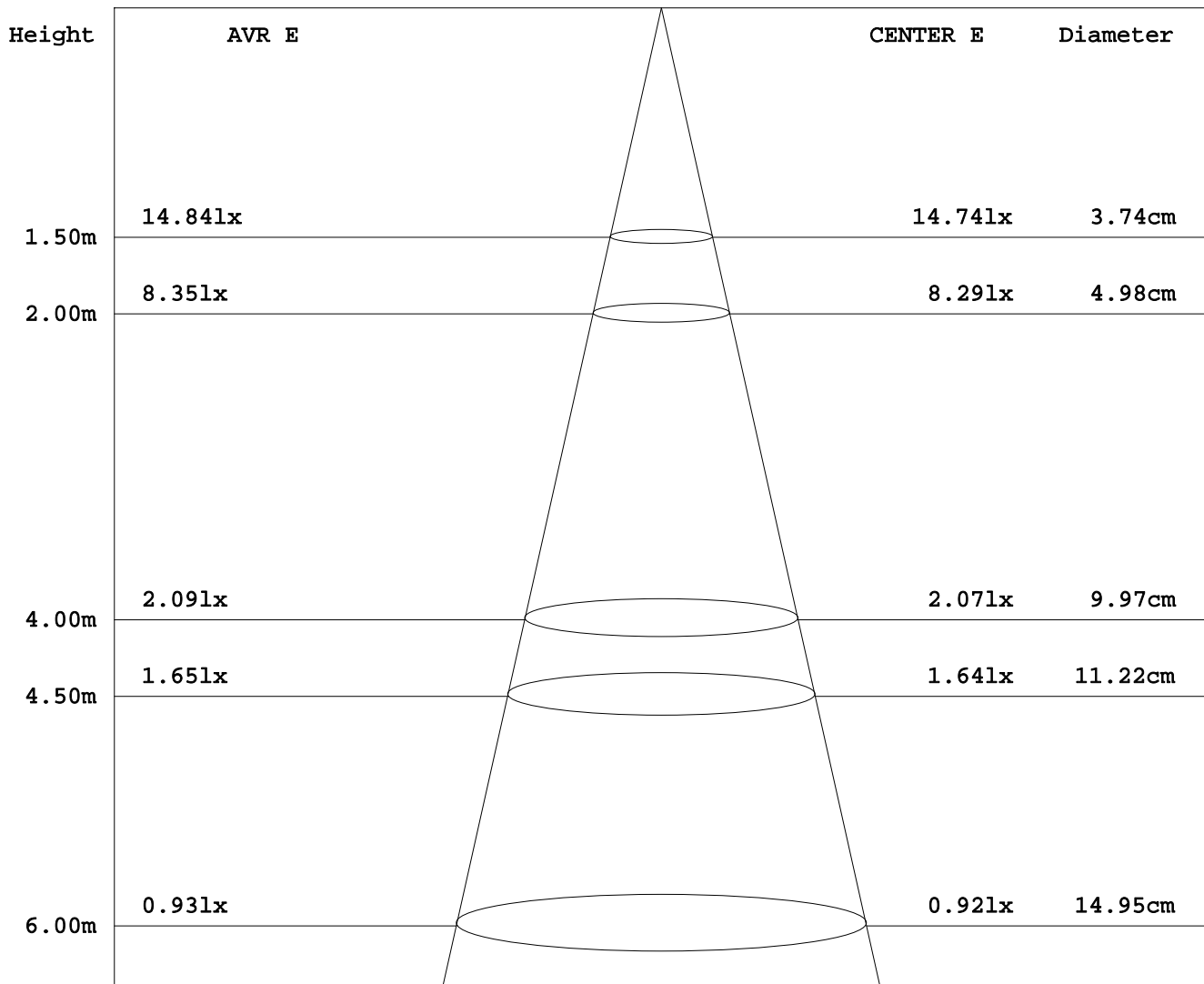
Test System:HOPOO HPG1800
Temperature:25.3DEG
Operators:
Test Date:2025年06月26日

Test Set: 7.0deg/s C-Gamma (TYPE C)
Humidity:65.0%
Test Distance:6.100 m
Remarks:

AVERAGE AND CENTER E Figure

Report number:

MANUFACTURER:			
Address:			
NAME:		TYPE:	WEIGHT:
SPECIFICATION:	CCT(K): 0	DIMENSION:	SERIAL No.:



Angle: 1.4deg

Test System: HOPOO HPG1800
 Temperature: 25.3DEG
 Operators:
 Test Date: 2025年06月26日

Test Set: 7.0deg/s C-Gamma (TYPE C)
 Humidity: 65.0%
 Test Distance: 6.100 m
 Remarks:

ZONAL FLUX DIAGRAM

Report number:

MANUFACTURER:			
Address:			
NAME:		TYPE:	
SPECIFICATION:		DIMENSION:	
CCT(K): 0		WEIGHT:	
		SERIAL No.:	

γ	C0	C45	C90	C135	C180	C225	C270	C315	γ	zone	total
10.0	32.78	31.57	31.62	32.54	31.85	34.17	34.45	33.82	0- 10	3.165	3.165
20.0	31.21	29.09	29.73	30.58	29.76	33.95	35.42	33.22	10- 20	9.149	12.31
30.0	28.57	26.38	27.57	28.14	27.12	32.91	35.38	31.85	20- 30	14.20	26.51
40.0	25.07	23.47	25.15	25.37	24.22	31.12	34.60	30.00	30- 40	17.95	44.47
50.0	20.65	20.42	22.73	22.21	20.65	28.72	33.07	27.77	40- 50	20.13	64.60
60.0	15.66	17.17	20.27	18.93	15.73	25.58	30.66	25.02	50- 60	20.61	85.22
70.0	10.23	13.99	17.78	15.62	10.45	21.95	27.72	21.74	60- 70	19.38	104.6
80.0	4.948	11.03	15.47	12.53	5.134	18.15	24.70	18.30	70- 80	16.87	121.4
90.0	1.116	8.669	13.32	10.02	1.190	14.60	21.65	14.90	80- 90	13.76	135.2
100.0	0.372	4.948	10.64	6.958	0.112	9.116	17.19	9.860	90-100	9.520	144.7
110.0	0.298	2.493	8.558	5.004	0.112	7.646	13.69	5.097	100-110	6.835	151.6
120.0	0.260	0.428	3.646	2.586	0.074	5.376	9.116	0.688	110-120	3.906	155.5
130.0	0.260	0.316	0.967	1.265	0.112	3.069	2.232	0.223	120-130	1.652	157.1
140.0	0.223	0.260	0.186	0.558	0.112	1.265	0.447	0.205	130-140	0.580	157.7
150.0	0.223	0.186	0.112	0.242	0.112	0.335	0.372	0.186	140-150	0.203	157.9
160.0	0.186	0.167	0.112	0.186	0.112	0.167	0.335	0.167	150-160	0.092	158.0
170.0	0.186	0.167	0.112	0.167	0.149	0.167	0.298	0.167	160-170	0.049	158.0
180.0	0.149	0.149	0.149	0.167	0.186	0.149	0.260	0.167	170-180	0.016	158.1
DEG	LUMINOUS INTENSITY:cd									UNIT:lm	

Test System:HOPOO HPG1800
 Temperature:25.3DEG
 Operators:
 Test Date:2025年06月26日

Test Set: 7.0deg/s C-Gamma (TYPE C)
 Humidity:65.0%
 Test Distance:6.100 m
 Remarks:

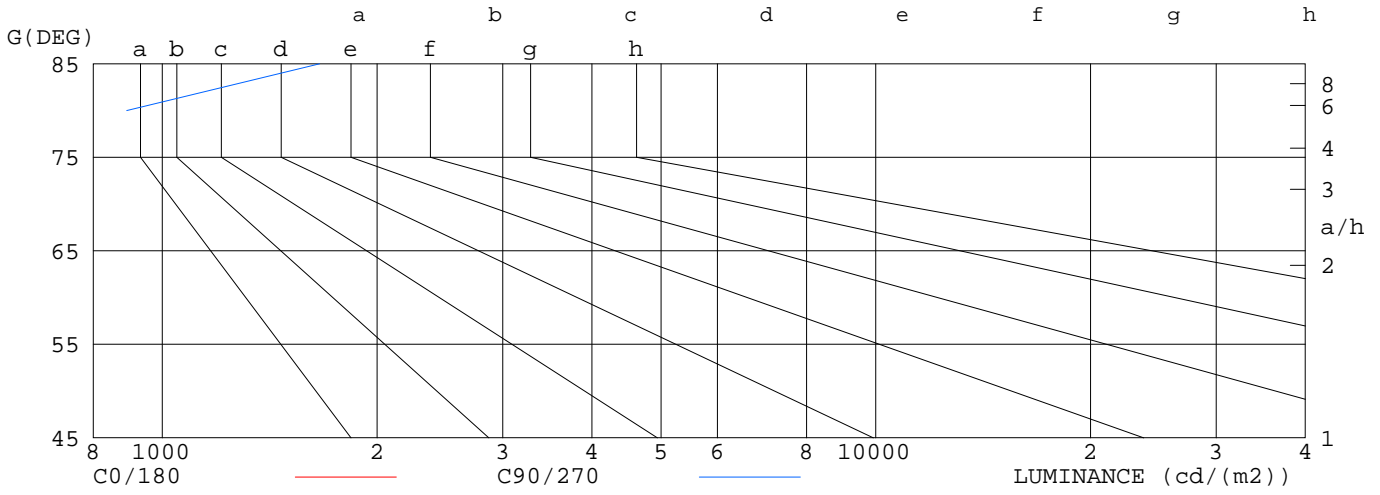
LUMINANCE LIMITATION CURVES

Report number:

MANUFACTURER:			
Address:			
NAME:		TYPE:	WEIGHT:
SPECIFICATION:	CCT(K): 0	DIMENSION:	SERIAL No.:

LUMINANCE LIMITATION CURVES

GLARE	CLASS	ILLUMINANCE (lx)							
		2000	1000	500	<=300				
1.15	A								
1.50	B		2000	1000	500	<=300			
1.85	C			2000	1000	500	<=300		
2.20	D				2000	1000	500	<=300	
2.55	E					2000	1000	500	<=300



LUMINANCE cd/m2

G (DEG)	C0/180	C90/270
85	307	1661
80	285	891
75	292	640
70	299	520
65	307	450
60	313	406
55	319	374
50	321	354
45	320	338

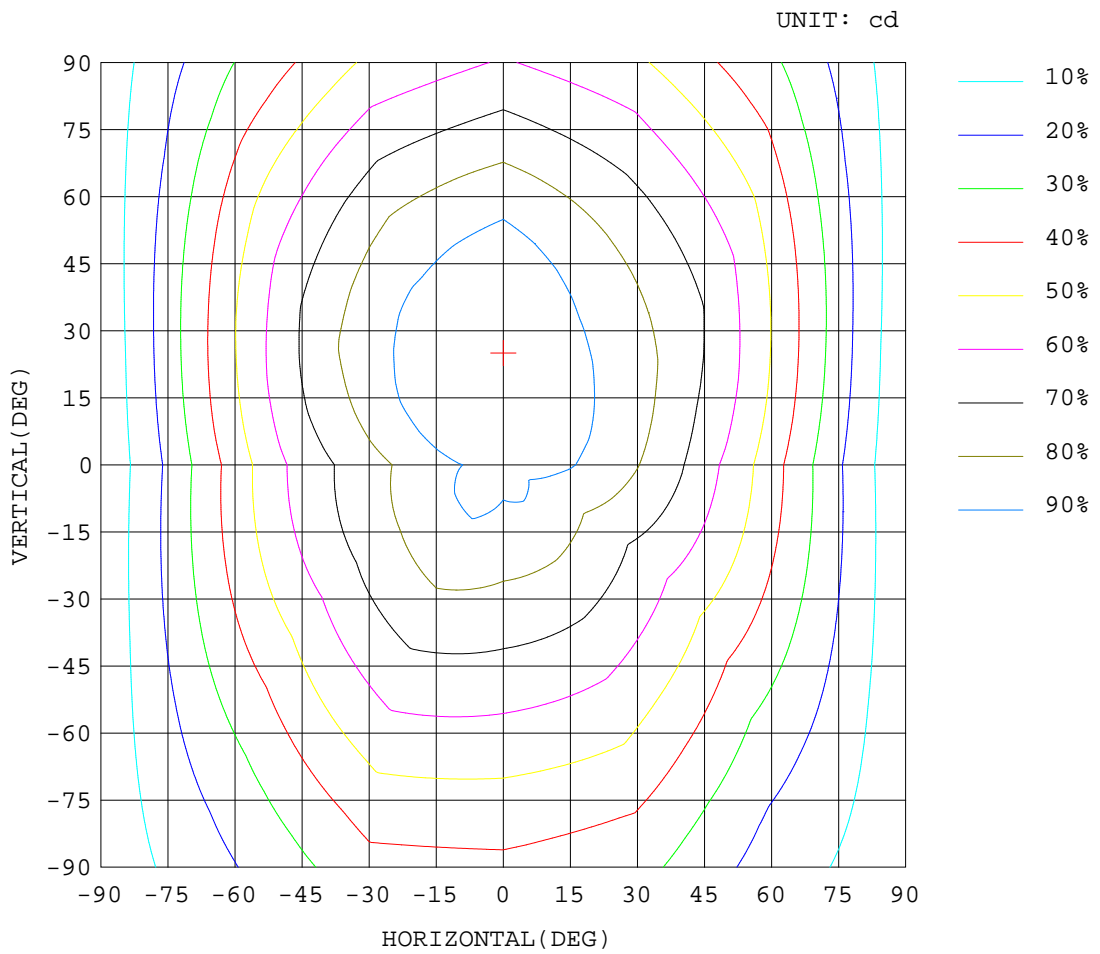
Test System: HOPOO HPG1800
 Temperature: 25.3 DEG
 Operators:
 Test Date: 2025年06月26日

Test Set: 7.0deg/s C-Gamma (TYPE C)
 Humidity: 65.0%
 Test Distance: 6.100 m
 Remarks:

ISOCANDELA DIAGRAM

Report number:

MANUFACTURER:			
Address:			
NAME:		TYPE:	WEIGHT:
SPECIFICATION:	CCT(K): 0	DIMENSION:	SERIAL No.:



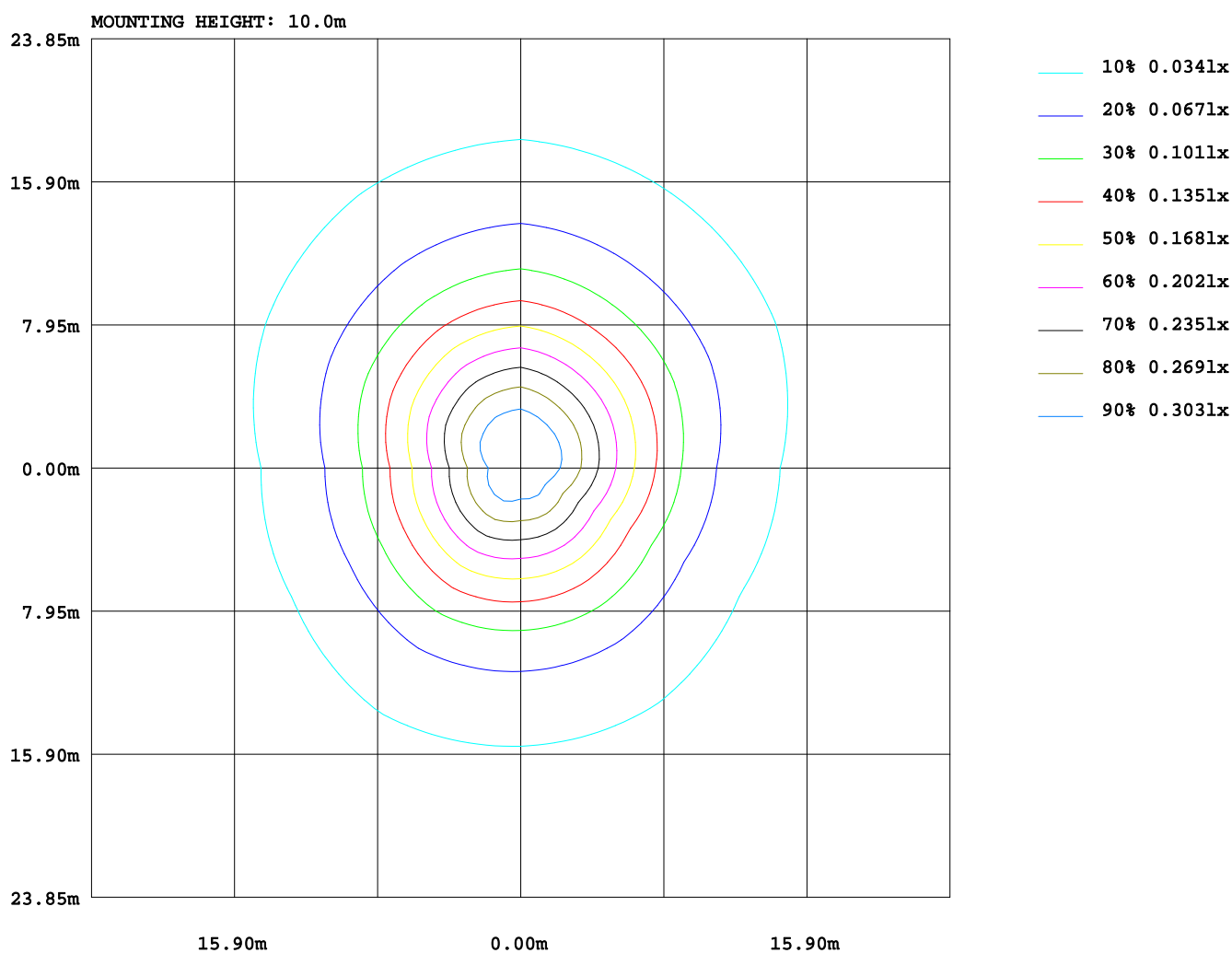
Test System:HOPOO HPG1800
 Temperature:25.3DEG
 Operators:
 Test Date:2025年06月26日

Test Set: 7.0deg/s C-Gamma (TYPE C)
 Humidity:65.0%
 Test Distance:6.100 m
 Remarks:

ISOLUX DIAGRAM

Report number:

MANUFACTURER:			
Address:			
NAME:		TYPE:	WEIGHT:
SPECIFICATION:	CCT(K): 0	DIMENSION:	SERIAL No.:



Test System:HOPOO HPG1800
 Temperature:25.3DEG
 Operators:
 Test Date:2025年06月26日

Test Set: 7.0deg/s C-Gamma (TYPE C)
 Humidity:65.0%
 Test Distance:6.100 m
 Remarks:

AREA LUMINOUS FLUX

Report number:

MANUFACTURER:																			
Address:																			
NAME:										TYPE:					WEIGHT:				
SPECIFICATION:					CCT(K): 0					DIMENSION:					SERIAL No.:				

		AREA FLUX DIAGRAM																UNIT:lm		Φ t	Φ a		
VERTICAL(DEG)	90	0.01	0.05	0.13	0.23	0.34	0.46	0.56	0.63	0.69	0.69	0.63	0.56	0.46	0.35	0.24	0.14	0.05	0.01	6.22	5.83		
	80	0.01	0.06	0.15	0.26	0.39	0.53	0.64	0.72	0.78	0.78	0.71	0.63	0.52	0.39	0.27	0.15	0.06	0.01	7.06	6.63		
	70	0.01	0.06	0.16	0.29	0.44	0.59	0.72	0.81	0.87	0.86	0.79	0.70	0.57	0.44	0.30	0.17	0.07	0.01	7.87	7.39		
	60	0.01	0.07	0.18	0.32	0.48	0.64	0.79	0.89	0.95	0.94	0.86	0.76	0.62	0.48	0.33	0.18	0.07	0.01	8.57	8.05		
	50	0.01	0.07	0.19	0.34	0.51	0.68	0.83	0.94	1.01	1.00	0.91	0.80	0.66	0.51	0.35	0.19	0.07	0.01	9.09	8.55		
	40	0.01	0.07	0.19	0.35	0.54	0.71	0.86	0.98	1.04	1.03	0.95	0.83	0.69	0.53	0.35	0.19	0.07	0.01	9.43	8.88		
	30	0.01	0.07	0.19	0.36	0.54	0.72	0.88	1.00	1.06	1.04	0.96	0.85	0.70	0.53	0.35	0.19	0.07	0.01	9.56	9.01		
		0.01	0.07	0.19	0.35	0.53	0.70	0.87	0.99	1.05	1.04	0.97	0.85	0.70	0.52	0.35	0.19	0.07	0.01	9.46	8.93		
		0.01	0.07	0.18	0.33	0.50	0.67	0.82	0.95	1.02	1.02	0.96	0.84	0.68	0.51	0.33	0.18	0.07	0.01	9.13	8.63		
		0.01	0.06	0.17	0.32	0.48	0.64	0.78	0.91	0.99	0.97	0.90	0.80	0.65	0.48	0.32	0.17	0.06	0.01	8.73	8.24		
		0.01	0.06	0.17	0.31	0.47	0.63	0.77	0.89	0.94	0.92	0.84	0.73	0.60	0.45	0.30	0.16	0.06	0.01	8.34	7.86		
	-30	0.01	0.06	0.16	0.30	0.45	0.60	0.74	0.84	0.88	0.86	0.80	0.68	0.55	0.42	0.28	0.15	0.06	0.01	7.84	7.38		
	-40	0.01	0.06	0.15	0.28	0.41	0.56	0.69	0.78	0.81	0.79	0.74	0.64	0.51	0.38	0.25	0.14	0.06	0.01	7.26	6.83		
	-50	0.01	0.06	0.14	0.25	0.38	0.52	0.64	0.71	0.73	0.72	0.67	0.59	0.47	0.34	0.22	0.13	0.05	0.01	6.63	6.24		
	-60	0.01	0.05	0.13	0.23	0.35	0.47	0.58	0.64	0.65	0.64	0.60	0.54	0.43	0.31	0.20	0.11	0.05	0.01	5.98	5.63		
	-70	0.01	0.05	0.11	0.20	0.31	0.42	0.52	0.56	0.58	0.57	0.53	0.48	0.38	0.27	0.17	0.10	0.04	0.01	5.31	4.99		
-80	0.01	0.04	0.10	0.18	0.27	0.37	0.45	0.49	0.50	0.50	0.47	0.42	0.34	0.24	0.15	0.08	0.03	0.01	4.63	4.36			
-90	0.01	0.04	0.08	0.15	0.23	0.32	0.39	0.42	0.44	0.43	0.40	0.36	0.29	0.20	0.13	0.07	0.03	0.01	4.00	3.77			
		-90	-80	-70	-60	-50	-40	-30	-20	HORIZONTAL(DEG)				20	30	40	50	60	70	80	90		
Φ t		0.18	1.07	2.77	5.04	7.62	10.2	12.5	14.1	15.0	14.8	13.7	12.0	9.84	7.35	4.88	2.68	1.04	0.17	158			
Φ a		0.00	0.00	0.00	5.04	7.62	10.2	12.5	14.1	15.0	14.8	13.7	12.0	9.84	7.35	4.88	0.00	0.00	0.00		85		

Test System:HOPOO HPG1800
 Temperature:25.3DEG
 Operators:
 Test Date:2025年06月26日

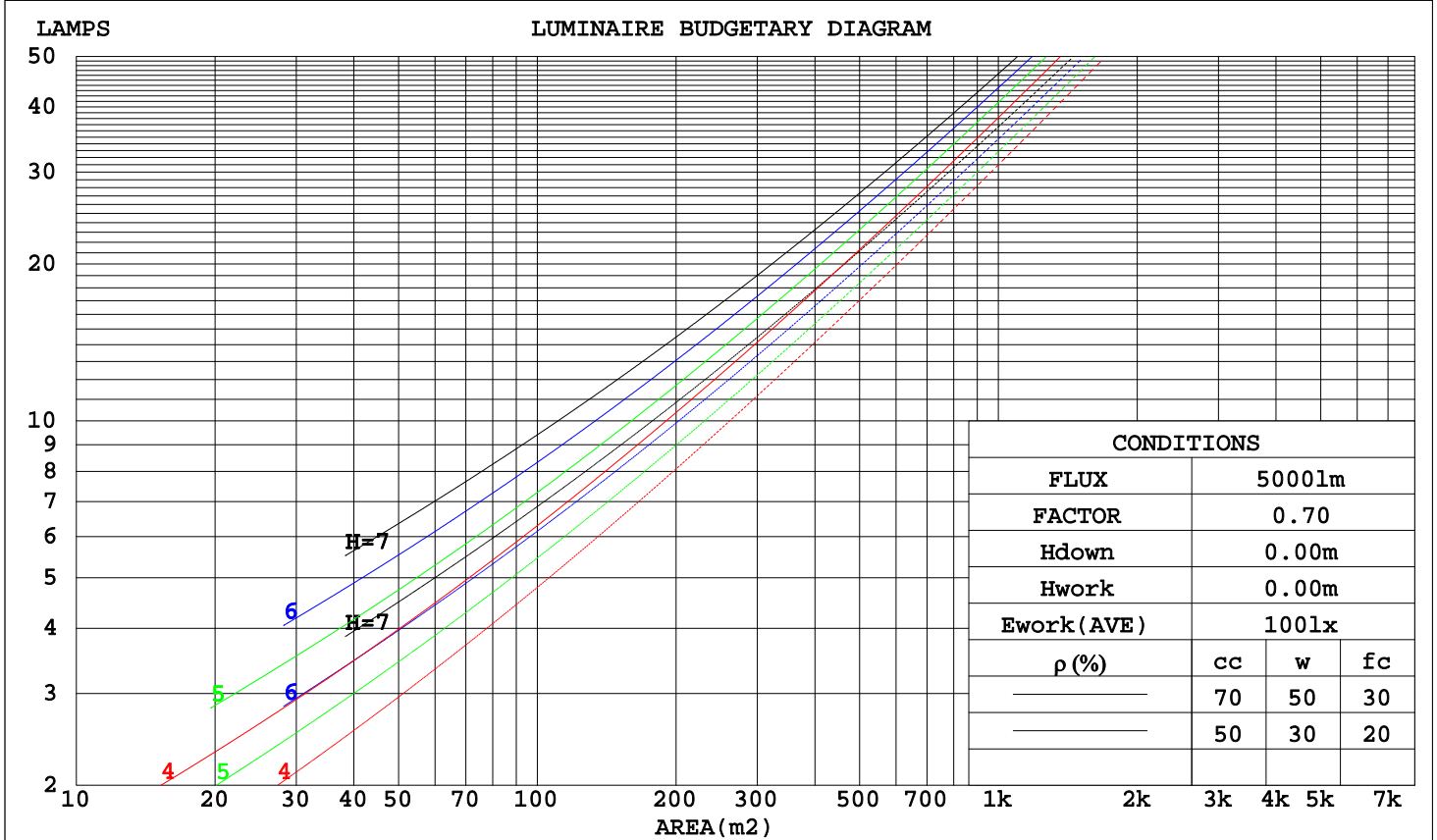
Test Set: 7.0deg/s C-Gamma (TYPE C)
 Humidity:65.0%
 Test Distance:6.100 m
 Remarks:

CU AND LUMINAIRE BUDGETARY ESTIMATE DIAGRAM

Report number:

MANUFACTURER:															
Address:															
NAME:								TYPE:				WEIGHT:			
SPECIFICATION:				CCT(K): 0				DIMENSION:				SERIAL No.:			

ρ_{cc}	80%			70%			50%			30%			10%			0
ρ_w	50%	30%	10%	50%	30%	10%	50%	30%	10%	50%	30%	10%	50%	30%	10%	0
ρ_{fc}	20%			20%			20%			20%			20%			0
RCR	RCR:Room Cavity Ratio						Coefficients of Utilization(CU)									
0.0	1.16	1.16	1.16	1.11	1.11	1.11	1.03	1.03	1.03	.96	.96	.96	.89	.89	.89	.86
1.0	.95	.90	.85	.92	.87	.82	.85	.80	.77	.78	.75	.72	.72	.70	.67	.64
2.0	.81	.73	.66	.78	.71	.64	.72	.66	.60	.66	.61	.57	.61	.57	.53	.50
3.0	.70	.61	.53	.67	.59	.52	.62	.55	.49	.57	.51	.46	.53	.48	.44	.41
4.0	.61	.52	.44	.59	.50	.43	.55	.47	.41	.51	.44	.39	.47	.41	.37	.34
5.0	.54	.45	.37	.52	.43	.37	.49	.41	.35	.45	.38	.33	.42	.36	.31	.29
6.0	.49	.39	.32	.47	.38	.32	.44	.36	.30	.41	.34	.29	.38	.32	.27	.25
7.0	.44	.35	.28	.42	.34	.28	.39	.32	.26	.37	.30	.25	.34	.28	.24	.22
8.0	.40	.31	.25	.39	.30	.24	.36	.29	.23	.34	.27	.22	.31	.26	.21	.19
9.0	.36	.28	.22	.35	.27	.22	.33	.26	.21	.31	.25	.20	.29	.23	.19	.17
10.0	.33	.25	.20	.32	.25	.19	.30	.24	.19	.29	.22	.18	.27	.21	.17	.15



Test System:HOPOO HPG1800
 Temperature:25.3DEG
 Operators:
 Test Date:2025年06月26日

Test Set: 7.0deg/s C-Gamma (TYPE C)
 Humidity:65.0%
 Test Distance:6.100 m
 Remarks:

WEC AND CCEC

Report number:

MANUFACTURER:															
Address:															
NAME:								TYPE:				WEIGHT:			
SPECIFICATION:				CCT(K): 0				DIMENSION:				SERIAL No.:			

ρ_{cc}	80%			70%			50%			30%			10%			0
ρ_w	50%	30%	10%	50%	30%	10%	50%	30%	10%	50%	30%	10%	50%	30%	10%	0
ρ_{fc}	20%			20%			20%			20%			20%			0
RCR	RCR:Room Cavity Ratio						Wall Exitance Coefficients(WEC)									
0.0																
1.0	.406	.231	.073	.394	.225	.071	.372	.213	.068	.352	.203	.065	.333	.193	.062	
2.0	.347	.190	.058	.337	.185	.057	.317	.176	.055	.299	.168	.052	.282	.159	.050	
3.0	.306	.163	.049	.297	.159	.048	.279	.151	.046	.263	.144	.044	.247	.137	.042	
4.0	.275	.143	.042	.266	.139	.041	.250	.132	.040	.235	.126	.038	.221	.120	.037	
5.0	.249	.127	.037	.241	.124	.036	.226	.118	.035	.213	.112	.033	.200	.107	.032	
6.0	.227	.114	.033	.220	.111	.032	.207	.106	.031	.195	.101	.030	.183	.096	.029	
7.0	.209	.103	.029	.203	.101	.029	.191	.096	.028	.179	.092	.027	.169	.088	.026	
8.0	.194	.095	.027	.188	.092	.026	.177	.088	.025	.166	.084	.024	.156	.080	.023	
9.0	.180	.087	.024	.175	.085	.024	.165	.081	.023	.155	.078	.022	.146	.074	.021	
10.0	.168	.081	.022	.164	.079	.022	.154	.076	.021	.145	.072	.021	.137	.069	.020	

ρ_{cc}	80%			70%			50%			30%			10%			0
ρ_w	50%	30%	10%	50%	30%	10%	50%	30%	10%	50%	30%	10%	50%	30%	10%	0
ρ_{fc}	20%			20%			20%			20%			20%			0
RCR	RCR:Room Cavity Ratio						Ceiling Cavity Exitance Coefficients(CCEC)									
0.0																
1.0	.298	.266	.238	.255	.229	.205	.174	.157	.142	.100	.091	.082	.032	.029	.027	
2.0	.291	.243	.203	.250	.210	.176	.171	.145	.122	.099	.084	.072	.032	.027	.023	
3.0	.284	.227	.182	.243	.196	.157	.167	.136	.110	.097	.079	.065	.031	.026	.021	
4.0	.276	.214	.167	.237	.185	.145	.163	.129	.102	.094	.076	.061	.030	.025	.020	
5.0	.268	.205	.158	.230	.177	.137	.159	.124	.097	.092	.073	.057	.030	.024	.019	
6.0	.260	.197	.151	.224	.170	.131	.154	.119	.093	.090	.070	.055	.029	.023	.018	
7.0	.253	.190	.146	.218	.165	.127	.150	.115	.090	.087	.068	.054	.028	.022	.018	
8.0	.246	.184	.142	.212	.160	.124	.147	.112	.088	.085	.066	.052	.028	.022	.017	
9.0	.240	.180	.139	.207	.156	.121	.143	.110	.086	.083	.065	.051	.027	.021	.017	
10.0	.234	.175	.136	.202	.152	.119	.140	.107	.085	.082	.063	.050	.026	.021	.017	

Test System:HOPOO HPG1800
 Temperature:25.3DEG
 Operators:
 Test Date:2025年06月26日

Test Set: 7.0deg/s C-Gamma (TYPE C)
 Humidity:65.0%
 Test Distance:6.100 m
 Remarks:

UGR Table

Report number:

MANUFACTURER:											
Address:											
NAME:					TYPE:			WEIGHT:			
SPECIFICATION:		CCT(K): 0			DIMENSION:			SERIAL No.:			
ceiling/cavity		0.7	0.7	0.5	0.5	0.3	0.7	0.7	0.5	0.5	0.3
walls		0.5	0.3	0.5	0.3	0.3	0.5	0.3	0.5	0.3	0.3
working plane		0.2	0.2	0.2	0.2	0.2	0.2	0.2	0.2	0.2	0.2
Room dimensions		Viewed crosswise					Viewed endwise				
x = 2H y = 2H		6.9	8.3	7.3	8.8	9.3	8.2	9.7	8.7	10.1	10.6
	3H	8.6	10.0	9.1	10.5	11.0	10.9	12.2	11.4	12.7	13.2
	4H	9.4	10.7	9.9	11.2	11.7	12.3	13.6	12.9	14.1	14.7
	6H	10.0	11.2	10.5	11.7	12.3	14.0	15.2	14.5	15.7	16.3
	8H	10.2	11.4	10.8	11.9	12.5	14.9	16.1	15.5	16.6	17.2
	12H	10.4	11.5	11.0	12.1	12.7	16.0	17.2	16.6	17.7	18.3
	4H 2H	7.8	9.1	8.3	9.6	10.1	8.8	10.1	9.3	10.6	11.2
	3H	9.7	10.8	10.3	11.4	12.0	11.7	12.9	12.3	13.4	14.0
	4H	10.6	11.7	11.2	12.2	12.9	13.4	14.5	14.0	15.0	15.7
	6H	11.4	12.4	12.0	13.0	13.6	15.3	16.2	15.9	16.8	17.5
	8H	11.7	12.6	12.4	13.2	13.9	16.3	17.2	17.0	17.8	18.5
	12H	12.0	12.8	12.7	13.5	14.2	17.6	18.4	18.2	19.0	19.7
	8H 4H	11.5	12.4	12.1	13.0	13.7	13.8	14.6	14.4	15.3	16.0
	6H	12.6	13.3	13.2	14.0	14.7	16.0	16.7	16.6	17.4	18.1
	8H	13.1	13.8	13.8	14.4	15.2	17.3	17.9	17.9	18.6	19.4
	12H	13.6	14.2	14.3	14.9	15.7	18.8	19.4	19.5	20.1	20.8
	12H 4H	11.8	12.6	12.5	13.3	14.0	13.8	14.6	14.4	15.2	15.9
	6H	13.1	13.8	13.8	14.4	15.2	16.1	16.8	16.8	17.4	18.2
	8H	13.8	14.3	14.4	15.0	15.8	17.5	18.1	18.2	18.8	19.6
Variations with the observer position at spacings:											
S = 1.0H		+ 0.1 / - 0.1					+ 0.1 / - 0.1				
1.5H		+ 0.1 / - 0.2					+ 0.2 / - 0.3				
2.0H		+ 0.1 / - 0.3					+ 0.3 / - 0.4				

CIE Pub.117 Corrected 158.1 lm Total Lamp Luminous Flux. (8log(F/F0) = -6.4)

Test System:HOPOO HPG1800
 Temperature:25.3DEG
 Operators:
 Test Date:2025年06月26日

Test Set: 7.0deg/s C-Gamma (TYPE C)
 Humidity:65.0%
 Test Distance:6.100 m
 Remarks:

UTILIZATION FACTORS TABLE

Report number:

MANUFACTURER:			
Address:			
NAME:		TYPE:	WEIGHT:
SPECIFICATION:	CCT(K): 0	DIMENSION:	SERIAL No.:

REFLECTANCE											
Ceiling	0.8	0.8	0.8	0.7	0.7	0.7	0.5	0.5	0.5	0	
Walls	0.7	0.5	0.3	0.7	0.5	0.3	0.7	0.5	0.3	0	
Working plane	0.2	0.2	0.2	0.2	0.2	0.2	0.2	0.2	0.2	0	
ROOM INDEX	UTILIZATION FACTORS(PERCENT) $k(RI) \times RCR = 5$										
k = 0.60	48	35	27	47	35	27	45	34	27	20	
0.80	57	43	35	55	43	35	53	42	34	26	
1.00	64	51	42	63	50	42	59	51	41	33	
1.25	71	58	49	69	57	49	65	55	48	38	
1.50	76	64	55	74	62	54	70	60	52	42	
2.00	84	72	64	81	70	63	76	67	60	49	
2.50	88	78	69	85	76	68	79	72	65	53	
3.00	92	82	75	89	80	73	83	76	70	57	
4.00	97	89	82	93	86	80	87	81	76	62	
5.00	100	93	87	96	90	84	89	84	79	65	
ROOM INDEX	UF(total)									Direct	
According to DIN EN 13032-2 2004				Suspended				SHRNOM = 1.25			

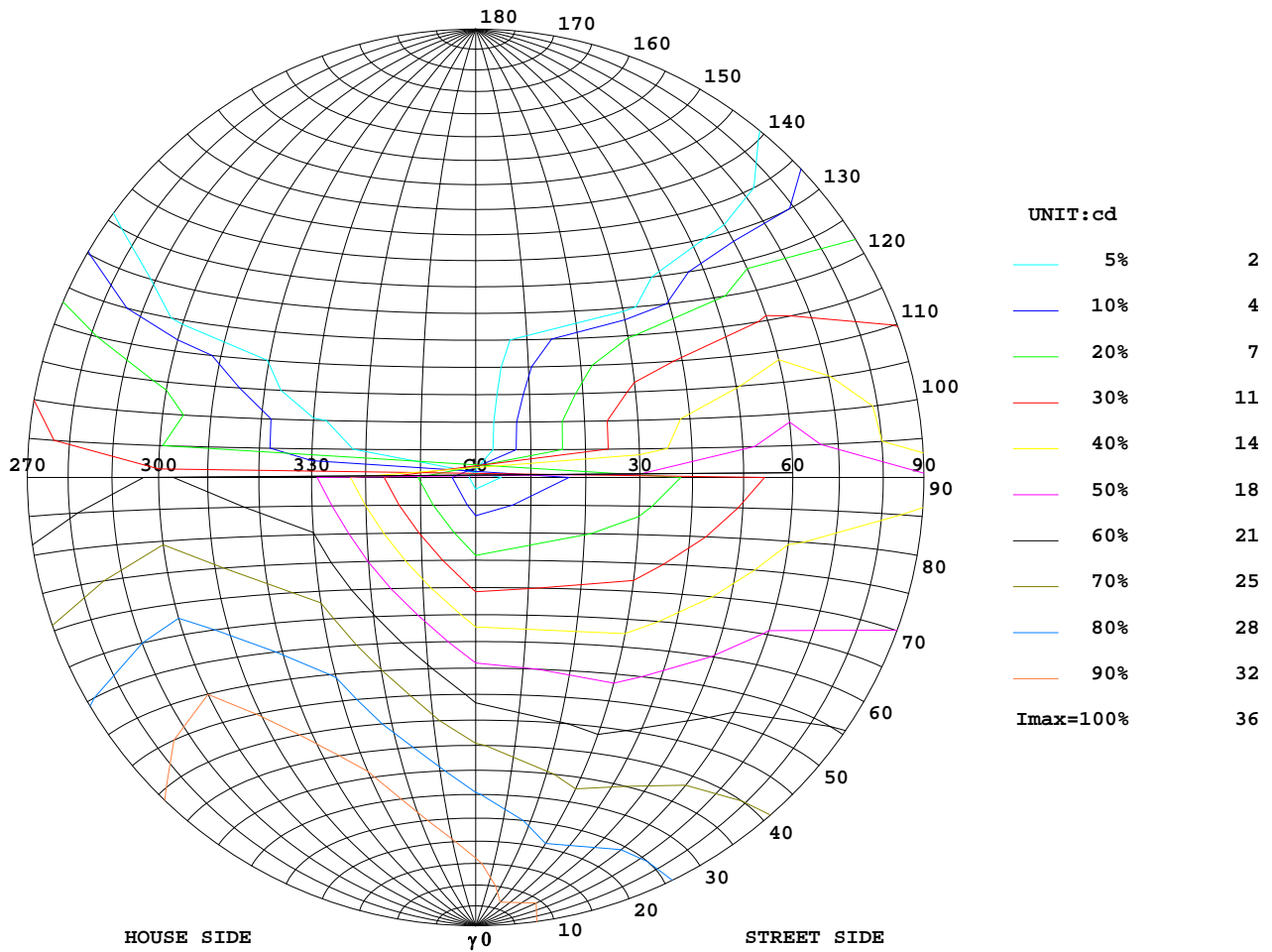
Test System:HOPOO HPG1800
 Temperature:25.3DEG
 Operators:
 Test Date:2025年06月26日

Test Set: 7.0deg/s C-Gamma (TYPE C)
 Humidity:65.0%
 Test Distance:6.100 m
 Remarks:

ISOCANDELA DIAGRAM

Report number:

MANUFACTURER:			
Address:			
NAME:		TYPE:	WEIGHT:
SPECIFICATION:	CCT(K): 0	DIMENSION:	SERIAL No.:



Test System:HOPOO HPG1800
 Temperature:25.3DEG
 Operators:
 Test Date:2025年06月26日

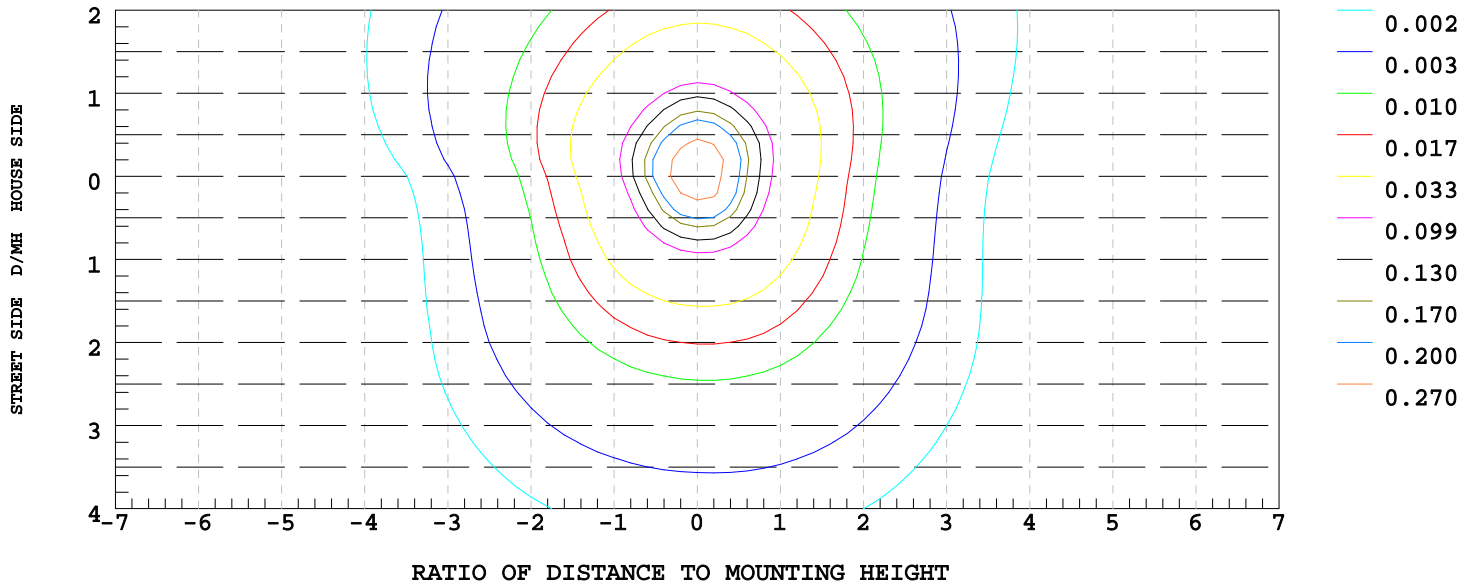
Test Set: 7.0deg/s C-Gamma (TYPE C)
 Humidity:65.0%
 Test Distance:6.100 m
 Remarks:

ISOLUX DIAGRAM

Report number:

MANUFACTURER:			
Address:			
NAME:		TYPE:	WEIGHT:
SPECIFICATION:	CCT(K): 0	DIMENSION:	SERIAL No.:

ILLUMINANCE AT MH=10 m, Enadir = 0.33 lx



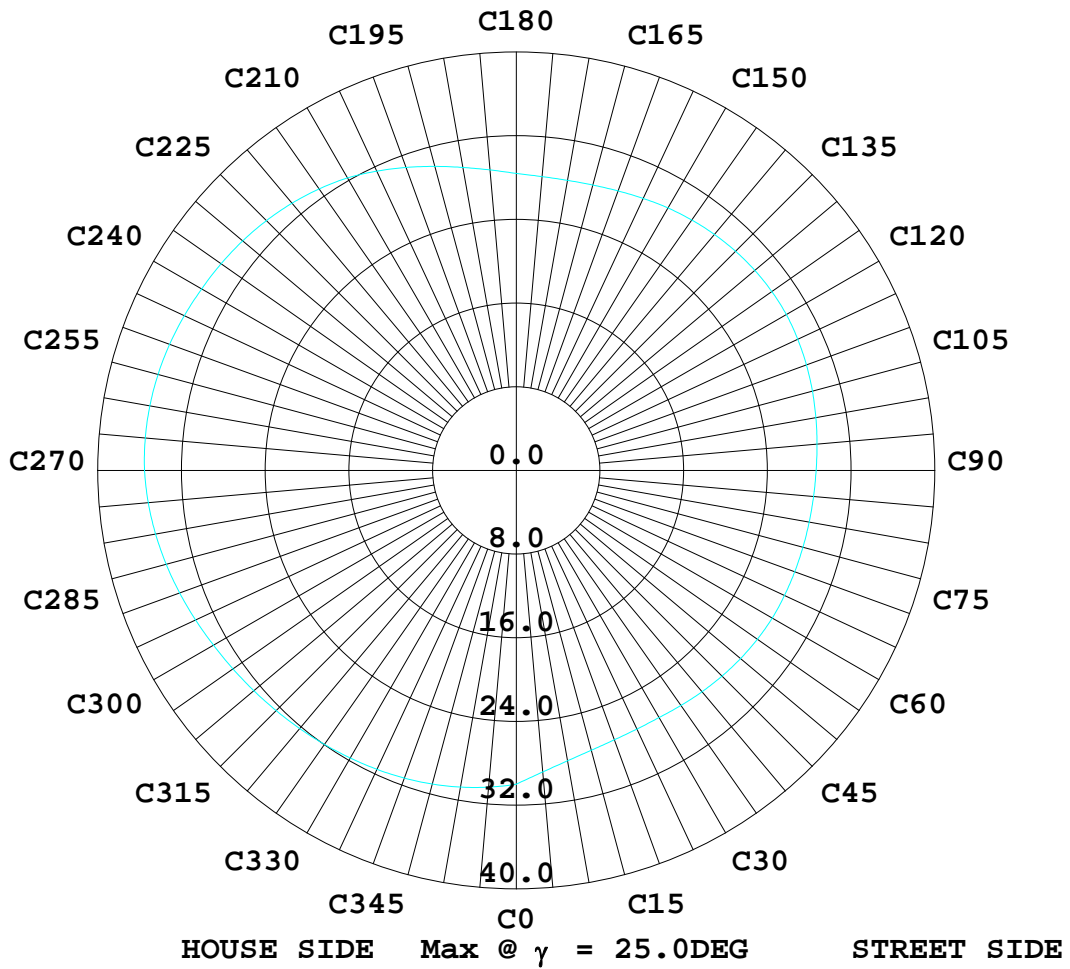
Test System: HOPOO HPG1800
 Temperature: 25.3 DEG
 Operators:
 Test Date: 2025年06月26日

Test Set: 7.0deg/s C-Gamma (TYPE C)
 Humidity: 65.0%
 Test Distance: 6.100 m
 Remarks:

ISOCANDELA DIAGRAM

Report number:

MANUFACTURER:			
Address:			
NAME:		TYPE:	WEIGHT:
SPECIFICATION:	CCT(K): 0	DIMENSION:	SERIAL No.:



Test System: HOPOO HPG1800
 Temperature: 25.3DEG
 Operators:
 Test Date: 2025年06月26日

Test Set: 7.0deg/s C-Gamma (TYPE C)
 Humidity: 65.0%
 Test Distance: 6.100 m
 Remarks:

LUMINOUS DISTRIBUTION INTENSITY DATA

Report number:

MANUFACTURER:			
Address:			
NAME:		TYPE:	WEIGHT:
SPECIFICATION:	CCT(K): 0	DIMENSION:	SERIAL No.:

UNIT: cd

γ (DEG)	C (DEG)											
	0	30	60	90	120	150	180	210	240	270	300	330
0.0	33.1	33.0	33.5	33.1	33.8	33.6	33.1	33.0	33.5	33.1	33.8	33.6
5.0	33.3	32.2	32.8	32.4	33.3	33.1	32.5	33.6	34.1	33.8	34.0	33.7
10.0	32.7	31.2	31.8	31.6	32.5	32.4	31.8	33.8	34.5	34.4	33.9	33.6
15.0	32.2	30.0	30.7	30.6	31.8	31.5	30.8	33.5	34.7	35.0	33.9	33.1
20.0	31.2	28.6	29.5	29.7	30.8	30.3	29.7	33.0	34.9	35.4	33.8	32.6
25.0	29.9	27.2	28.2	28.6	29.8	28.9	28.3	32.2	34.7	35.5	33.4	31.7
30.0	28.5	25.7	27.0	27.5	28.6	27.6	27.1	31.4	34.3	35.3	32.8	30.8
35.0	26.9	24.1	25.7	26.4	27.4	26.0	25.6	30.4	33.7	34.9	32.1	29.7
40.0	25.0	22.5	24.4	25.1	26.2	24.4	24.2	29.2	32.9	34.6	31.3	28.6
45.0	22.6	20.8	23.0	23.9	24.9	22.7	22.6	28.1	31.7	33.9	30.4	27.4
50.0	20.6	19.0	21.8	22.7	23.6	20.8	20.6	26.6	30.8	33.0	29.3	26.1
55.0	18.2	17.1	20.5	21.4	22.3	18.9	18.3	24.9	29.6	31.9	28.2	24.7
60.0	15.6	15.1	19.2	20.2	20.9	16.9	15.7	22.9	28.2	30.6	27.0	22.9
65.0	12.9	13.2	17.9	19.0	19.5	15.0	13.2	20.9	26.7	29.2	25.7	21.2
70.0	10.2	11.3	16.6	17.7	18.1	13.0	10.4	18.7	25.1	27.7	24.2	19.2
75.0	7.55	9.60	15.4	16.5	16.8	11.3	7.70	16.7	23.4	26.1	22.8	17.2
80.0	4.94	8.00	14.0	15.4	15.4	9.63	5.13	14.5	21.7	24.7	21.4	15.1
85.0	2.67	6.58	12.9	14.4	14.2	8.18	2.79	12.5	20.0	23.1	19.9	13.2
90.0	1.11	5.43	11.9	13.3	13.0	6.95	1.19	10.7	18.4	21.6	18.3	11.4
95.0	0.45	2.23	7.21	11.5	9.67	4.91	0.22	8.74	11.6	19.3	13.0	8.29
100.0	0.37	1.89	8.00	10.6	9.52	4.39	0.11	5.76	12.4	17.1	13.0	6.62
105.0	0.33	0.30	6.80	9.67	8.74	3.38	0.07	5.50	11.7	15.5	11.2	4.91
110.0	0.30	0.19	4.80	8.55	7.85	2.15	0.11	4.72	10.5	13.6	9.48	0.71
115.0	0.30	0.19	1.30	6.17	6.17	1.48	0.07	3.53	9.41	10.9	6.88	0.45
120.0	0.26	0.19	0.67	3.64	4.16	1.00	0.07	2.79	7.96	9.11	1.00	0.37
125.0	0.26	0.19	0.56	2.00	2.75	0.74	0.11	2.30	5.87	6.36	0.11	0.37
130.0	0.26	0.15	0.48	0.97	2.00	0.52	0.11	1.78	4.35	2.23	0.11	0.33
135.0	0.22	0.15	0.41	0.33	1.41	0.33	0.11	1.22	3.20	0.56	0.11	0.30
140.0	0.22	0.15	0.37	0.19	0.89	0.22	0.11	0.60	1.93	0.45	0.11	0.30
145.0	0.22	0.15	0.30	0.11	0.56	0.15	0.11	0.41	0.74	0.41	0.11	0.26
150.0	0.22	0.11	0.26	0.11	0.37	0.11	0.11	0.30	0.37	0.37	0.11	0.26
155.0	0.22	0.11	0.26	0.11	0.30	0.11	0.11	0.26	0.19	0.33	0.11	0.22
160.0	0.19	0.11	0.22	0.11	0.26	0.11	0.11	0.22	0.11	0.33	0.11	0.22
165.0	0.19	0.11	0.22	0.11	0.26	0.11	0.11	0.22	0.11	0.30	0.11	0.22
170.0	0.19	0.11	0.22	0.11	0.22	0.11	0.15	0.22	0.11	0.30	0.11	0.22
175.0	0.19	0.11	0.22	0.11	0.22	0.11	0.15	0.22	0.11	0.26	0.15	0.19
180.0	0.15	0.11	0.19	0.15	0.19	0.15	0.19	0.19	0.11	0.26	0.15	0.19

Test System:HOPOO HPG1800
Temperature:25.3DEG
Operators:
Test Date:2025年06月26日

Test Set: 7.0deg/s C-Gamma (TYPE C)
Humidity:65.0%
Test Distance:6.100 m
Remarks: