

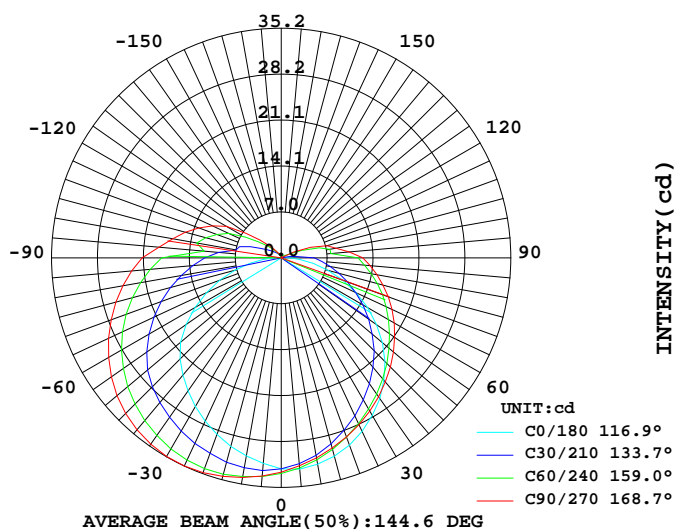
# LUMINAIRE PHOTOMETRIC TEST REPORT

Report number:

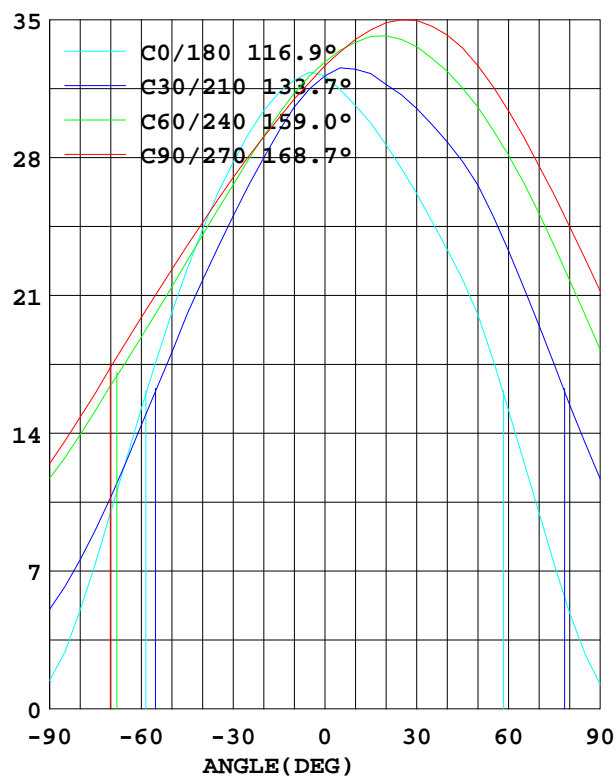
MANUFACTURER:			
Address:			
NAME:		TYPE:	WEIGHT:
SPECIFICATION:	CCT(K): 0	DIMENSION:	SERIAL No.:

DATA OF LAMP		I <sub>max</sub> (cd)	35.23	S/MH(C0/180)	1.28
MODEL		EFFICIENCY(%)	100.0	S/MH(C90/270)	1.24
NOMINAL POWER(W)	6	TOTAL FLUX(lm)	156.61	Voltage(V)	24.13
RATED VOLTAGE(V)	24	EFFICIENCY(lm/W)	27.4	Current(A)	0.237
NOMINAL FLUX(lm)	156.6	η up(%)	16.3	Power(W)	5.720
LAMPS QUANTITY	1	η down(%)	83.7	Power Factor(PF)	0.999
TEST VOLTAGE(V)	24.1	Effective Flux(lm)	82.1	EEL	0.477

LUMINOUS INTENSITY DISTRIBUTION



LUMINOUS INTENSITY DISTRIBUTION



Test System:HOPPO HPG1800  
 Temperature:25.3DEG  
 Operators:  
 Test Date:2025年06月26日

Test Set: 7.0deg/s C-Gamma (TYPE C)  
 Humidity:65.0%  
 Test Distance:6.100 m  
 Remarks:

---

## Color Temperature Data List

Report number:

MANUFACTURER:			
Address:			
NAME:		TYPE:	WEIGHT:
SPECIFICATION:	CCT(K): 0	DIMENSION:	SERIAL No.:

---

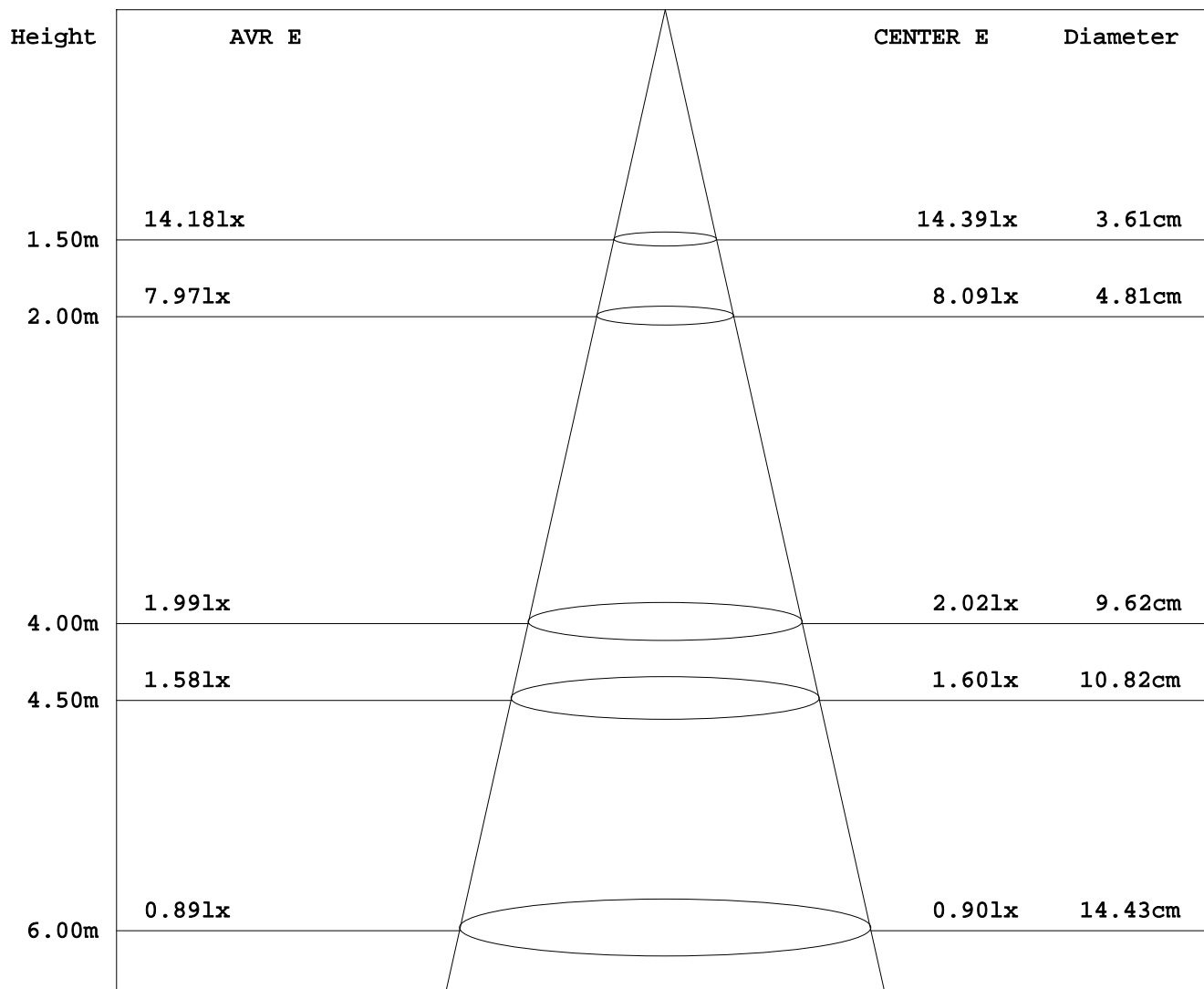
Test System:HOPOO HPG1800  
Temperature:25.3DEG  
Operators:  
Test Date:2025年06月26日

Test Set: 7.0deg/s C-Gamma (TYPE C)  
Humidity:65.0%  
Test Distance:6.100 m  
Remarks:

## AVERAGE AND CENTER E Figure

Report number:

MANUFACTURER:			
Address:			
NAME:		TYPE:	WEIGHT:
SPECIFICATION:	CCT(K): 0	DIMENSION:	SERIAL No.:



Angle:1.4deg

Test System:HOPOO HPG1800  
 Temperature:25.3DEG  
 Operators:  
 Test Date:2025年06月26日

Test Set: 7.0deg/s C-Gamma (TYPE C)  
 Humidity:65.0%  
 Test Distance:6.100 m  
 Remarks:

## ZONAL FLUX DIAGRAM

Report number:

MANUFACTURER:			
Address:			
NAME:		TYPE:	WEIGHT:
SPECIFICATION:	CCT(K): 0	DIMENSION:	SERIAL No.:

γ	C0	C45	C90	C135	C180	C225	C270	C315	γ	zone	total
10.0	32.14	31.12	31.18	29.56	30.84	33.39	34.23	30.45	0- 10	3.023	3.023
20.0	30.58	28.72	29.24	28.24	28.83	33.17	35.08	29.78	10- 20	8.753	11.77
30.0	27.94	25.99	27.16	26.40	26.34	32.27	35.20	28.54	20- 30	13.62	25.40
40.0	24.52	23.07	24.85	24.13	23.47	30.79	34.45	26.80	30- 40	17.27	42.67
50.0	20.27	19.90	22.47	21.54	20.16	28.78	32.89	24.65	40- 50	19.44	62.12
60.0	15.36	16.76	20.01	18.73	15.29	25.87	30.58	22.15	50- 60	19.95	82.07
70.0	10.08	13.69	17.48	15.85	10.04	22.47	27.75	19.34	60- 70	18.86	100.9
80.0	5.060	10.82	14.92	13.04	4.911	18.73	24.67	16.37	70- 80	16.53	117.4
90.0	1.451	8.446	12.53	10.90	1.227	15.05	21.35	13.30	80- 90	13.57	131.0
100.0	0.670	4.521	8.558	8.223	0.149	10.12	16.93	6.474	90-100	9.312	140.3
110.0	0.558	1.767	4.800	7.162	0.186	7.795	13.47	4.446	100-110	6.572	146.9
120.0	0.484	0.484	0.372	6.158	0.186	4.465	9.711	1.655	110-120	3.924	150.8
130.0	0.409	0.391	0.149	5.209	0.186	2.269	4.241	1.786	120-130	2.229	153.0
140.0	0.372	0.335	0.186	4.688	0.223	1.172	1.748	2.195	130-140	1.395	154.4
150.0	0.335	0.298	0.186	4.446	0.223	0.614	0.819	2.455	140-150	0.945	155.4
160.0	0.335	0.279	0.186	4.334	0.223	0.391	0.595	2.883	150-160	0.664	156.0
170.0	0.298	0.260	0.186	3.851	0.223	0.279	0.521	3.665	160-170	0.400	156.4
180.0	0.260	0.260	0.223	1.413	0.298	0.260	0.409	4.353	170-180	0.136	156.6
DEG	LUMINOUS INTENSITY:cd									UNIT:lm	

Test System:HOPOO HPG1800  
 Temperature:25.3DEG  
 Operators:  
 Test Date:2025年06月26日

Test Set: 7.0deg/s C-Gamma (TYPE C)  
 Humidity:65.0%  
 Test Distance:6.100 m  
 Remarks:

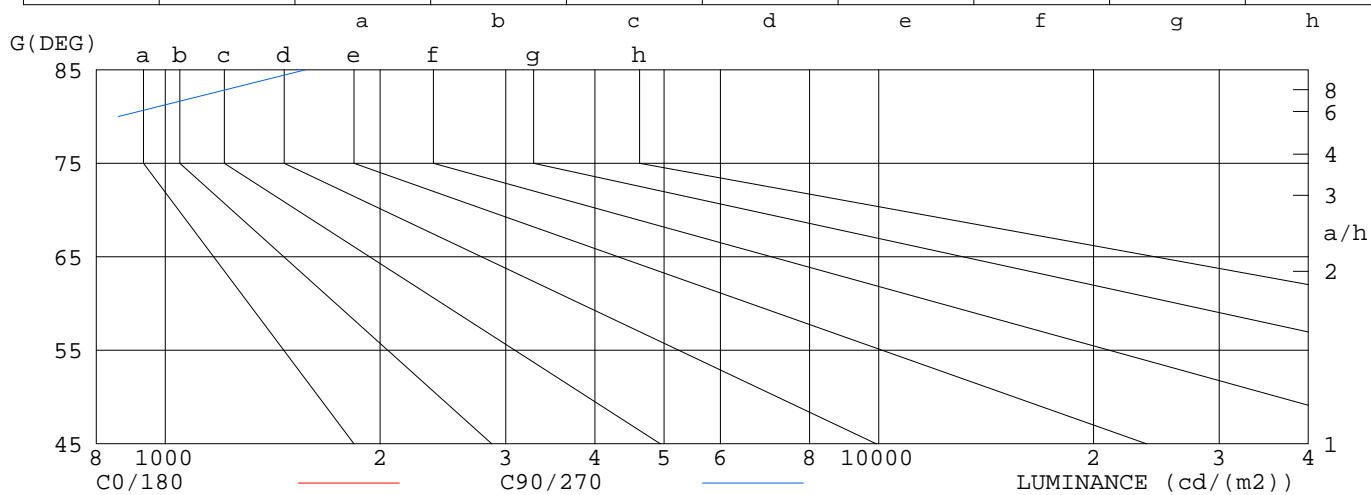
## LUMINANCE LIMITATION CURVES

Report number:

<b>MANUFACTURER:</b>			
<b>Address:</b>			
<b>NAME:</b>		<b>TYPE:</b>	
<b>SPECIFICATION:</b>		<b>SERIAL No.:</b>	
CCT(K): 0		DIMENSION:	
WEIGHT:		SERIAL No.:	

### LUMINANCE LIMITATION CURVES

GLARE	CLASS	ILLUMINANCE (lx)							
		2000	1000	500	<=300				
1.15	A								
1.50	B		2000	1000	500	<=300			
1.85	C			2000	1000	500	<=300		
2.20	D				2000	1000	500	<=300	
2.55	E					2000	1000	500	<=300



LUMINANCE cd/m2		
G (DEG)	C0/180	C90/270
85	333	1571
80	291	859
75	288	624
70	295	511
65	300	444
60	307	400
55	311	370
50	315	350
45	318	335

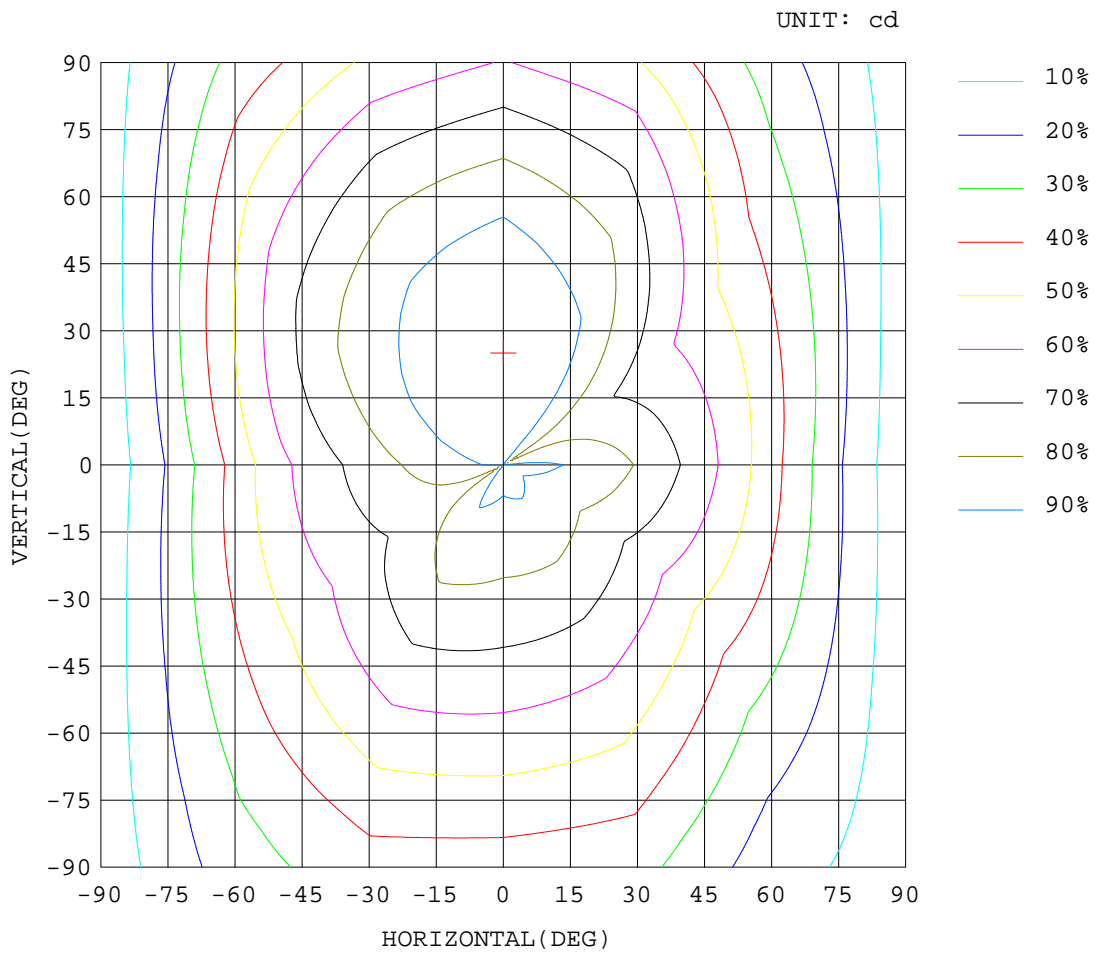
Test System: HOPOO HPG1800  
 Temperature: 25.3 DEG  
 Operators:  
 Test Date: 2025年06月26日

Test Set: 7.0deg/s C-Gamma (TYPE C)  
 Humidity: 65.0%  
 Test Distance: 6.100 m  
 Remarks:

# ISOCANDELA DIAGRAM

Report number:

MANUFACTURER:			
Address:			
NAME:		TYPE:	WEIGHT:
SPECIFICATION:	CCT(K): 0	DIMENSION:	SERIAL No.:



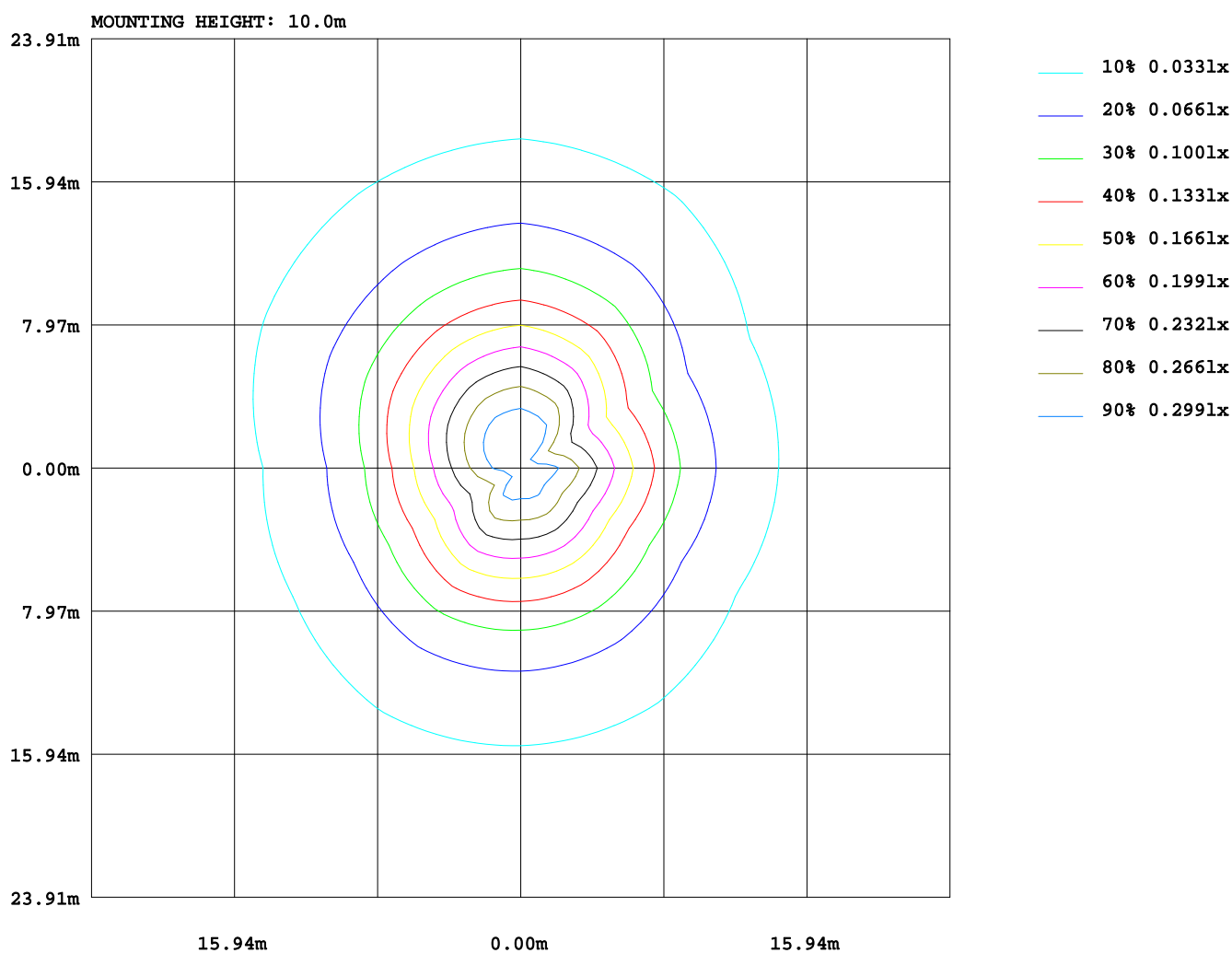
Test System: HOPOO HPG1800  
 Temperature: 25.3 DEG  
 Operators:  
 Test Date: 2025年06月26日

Test Set: 7.0deg/s C-Gamma (TYPE C)  
 Humidity: 65.0%  
 Test Distance: 6.100 m  
 Remarks:

# ISOLUX DIAGRAM

Report number:

MANUFACTURER:			
Address:			
NAME:		TYPE:	WEIGHT:
SPECIFICATION:	CCT(K): 0	DIMENSION:	SERIAL No.:



Test System:HOPOO HPG1800  
 Temperature:25.3DEG  
 Operators:  
 Test Date:2025年06月26日

Test Set: 7.0deg/s C-Gamma (TYPE C)  
 Humidity:65.0%  
 Test Distance:6.100 m  
 Remarks:

# AREA LUMINOUS FLUX

Report number:

MANUFACTURER:																			
Address:																			
NAME:										TYPE:					WEIGHT:				
SPECIFICATION:					CCT(K): 0					DIMENSION:					SERIAL No.:				

		AREA FLUX DIAGRAM																UNIT:lm		Φ t	Φ a
VERTICAL( DEG)	90	0.01	0.06	0.14	0.24	0.35	0.47	0.56	0.63	0.68	0.68	0.63	0.55	0.44	0.31	0.19	0.10	0.04	0.01	6.10	5.74
	80	0.01	0.06	0.16	0.28	0.40	0.54	0.65	0.73	0.78	0.78	0.71	0.63	0.50	0.35	0.22	0.12	0.05	0.01	6.96	6.56
	70	0.01	0.07	0.17	0.31	0.45	0.60	0.73	0.81	0.87	0.86	0.79	0.70	0.54	0.38	0.24	0.13	0.05	0.01	7.72	7.28
	60	0.01	0.07	0.18	0.33	0.49	0.65	0.79	0.88	0.95	0.94	0.86	0.75	0.57	0.40	0.25	0.14	0.06	0.01	8.33	7.86
	50	0.01	0.07	0.19	0.35	0.52	0.69	0.83	0.94	1.00	1.00	0.91	0.78	0.59	0.41	0.26	0.15	0.06	0.01	8.78	8.28
	40	0.01	0.07	0.19	0.36	0.54	0.71	0.86	0.97	1.04	1.03	0.94	0.78	0.58	0.41	0.28	0.16	0.06	0.01	9.01	8.50
	30	0.01	0.07	0.19	0.36	0.54	0.71	0.86	0.99	1.05	1.04	0.94	0.74	0.56	0.43	0.30	0.17	0.06	0.01	9.04	8.52
		0.01	0.07	0.19	0.35	0.52	0.69	0.84	0.97	1.04	1.02	0.86	0.70	0.59	0.46	0.31	0.17	0.06	0.01	8.87	8.36
		0.01	0.06	0.17	0.33	0.49	0.65	0.79	0.92	1.00	0.94	0.84	0.77	0.64	0.48	0.31	0.17	0.06	0.01	8.64	8.16
		0.01	0.06	0.17	0.31	0.47	0.61	0.74	0.82	0.92	0.96	0.88	0.78	0.64	0.47	0.31	0.16	0.06	0.01	8.38	7.91
		0.01	0.06	0.17	0.31	0.45	0.58	0.70	0.82	0.92	0.91	0.83	0.71	0.59	0.44	0.29	0.16	0.06	0.01	8.02	7.55
	-30	0.01	0.06	0.16	0.29	0.43	0.56	0.69	0.82	0.86	0.85	0.79	0.67	0.53	0.40	0.27	0.15	0.06	0.01	7.62	7.16
	-40	0.01	0.06	0.16	0.28	0.40	0.54	0.67	0.77	0.79	0.78	0.73	0.63	0.50	0.36	0.24	0.14	0.05	0.01	7.12	6.69
	-50	0.01	0.06	0.15	0.26	0.38	0.51	0.63	0.70	0.72	0.71	0.67	0.58	0.46	0.33	0.21	0.12	0.05	0.01	6.54	6.14
	-60	0.01	0.06	0.14	0.24	0.35	0.47	0.57	0.62	0.65	0.64	0.60	0.53	0.42	0.30	0.19	0.11	0.05	0.01	5.92	5.56
	-70	0.01	0.05	0.13	0.22	0.32	0.42	0.51	0.55	0.57	0.56	0.53	0.47	0.38	0.27	0.16	0.09	0.04	0.01	5.28	4.95
	-80	0.01	0.05	0.11	0.20	0.28	0.37	0.44	0.47	0.49	0.48	0.46	0.41	0.33	0.23	0.14	0.08	0.03	0.01	4.60	4.31
	-90	0.01	0.04	0.10	0.18	0.25	0.32	0.38	0.40	0.42	0.41	0.39	0.36	0.29	0.20	0.12	0.06	0.03	0.01	3.97	3.71
		-90	-80	-70	-60	-50	-40	-30	-20	HORIZONTAL( DEG)	20	30	40	50	60	70	80	90			
Φ t	0.19	1.11	2.86	5.17	7.64	10.0	12.2	13.8	14.7	14.6	13.3	11.5	9.16	6.63	4.30	2.38	0.95	0.17	157		
Φ a	0.00	0.00	0.00	5.17	7.64	10.0	12.2	13.8	14.7	14.6	13.3	11.5	9.16	6.63	4.30	0.00	0.00	0.00		82	

Test System:HOPOO HPG1800  
 Temperature:25.3DEG  
 Operators:  
 Test Date:2025年06月26日

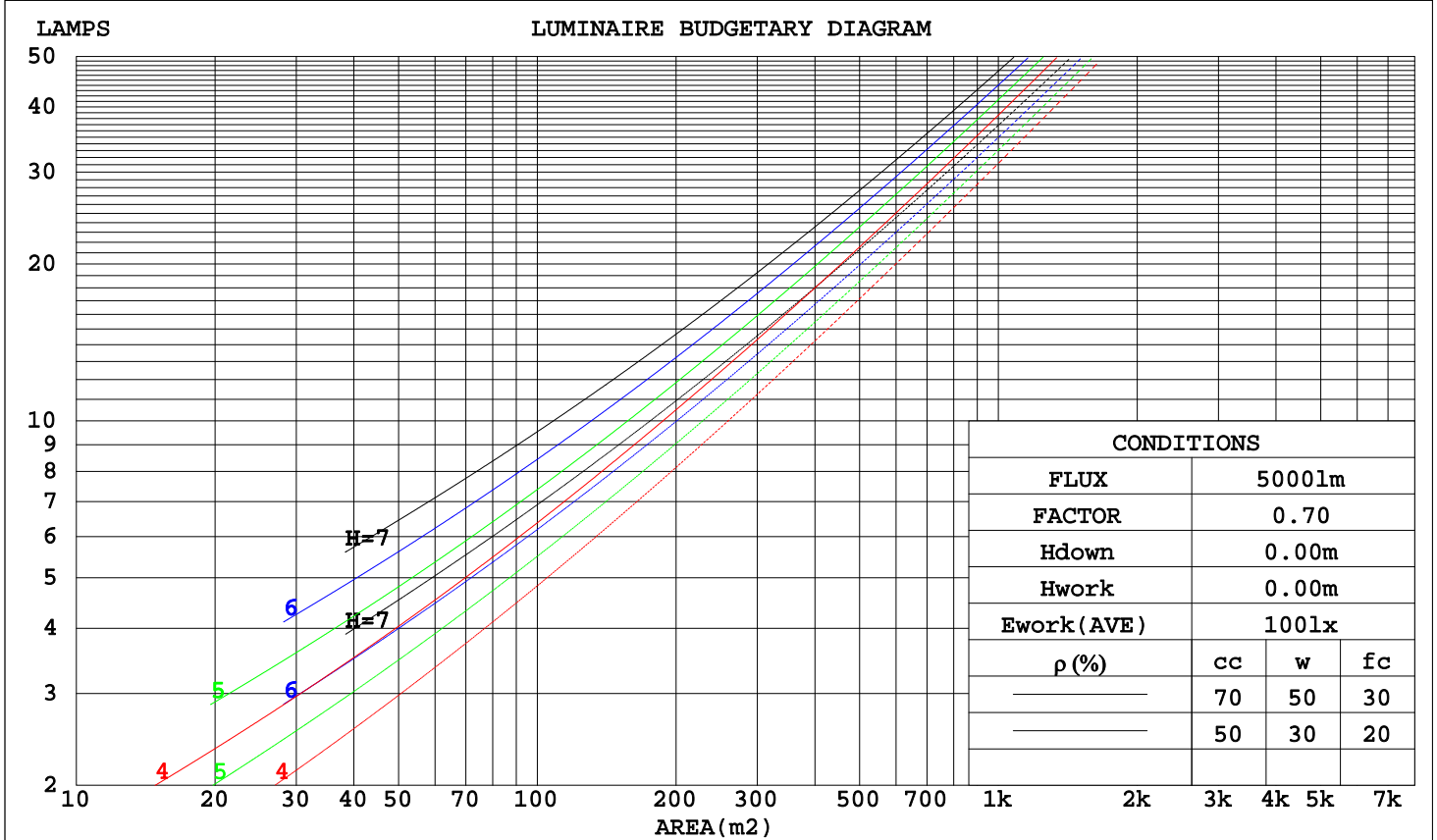
Test Set: 7.0deg/s C-Gamma (TYPE C)  
 Humidity:65.0%  
 Test Distance:6.100 m  
 Remarks:

## CU AND LUMINAIRE BUDGETARY ESTIMATE DIAGRAM

Report number:

MANUFACTURER:															
Address:															
NAME:								TYPE:				WEIGHT:			
SPECIFICATION:				CCT(K): 0				DIMENSION:				SERIAL No.:			

$\rho_{cc}$	80%			70%			50%			30%			10%			0
$\rho_w$	50%	30%	10%	50%	30%	10%	50%	30%	10%	50%	30%	10%	50%	30%	10%	0
$\rho_{fc}$	20%			20%			20%			20%			20%			0
RCR	RCR:Room Cavity Ratio						Coefficients of Utilization(CU)									
0.0	1.15	1.15	1.15	1.11	1.11	1.11	1.02	1.02	1.02	.94	.94	.94	.87	.87	.87	.84
1.0	.95	.89	.84	.91	.86	.81	.84	.80	.76	.77	.74	.71	.71	.68	.66	.62
2.0	.81	.73	.66	.77	.70	.64	.71	.65	.60	.65	.60	.56	.60	.56	.52	.49
3.0	.70	.61	.53	.67	.58	.52	.62	.54	.49	.57	.51	.46	.52	.47	.43	.40
4.0	.61	.51	.44	.59	.50	.43	.54	.46	.40	.50	.43	.38	.46	.40	.36	.33
5.0	.54	.44	.37	.52	.43	.36	.48	.40	.34	.44	.38	.32	.41	.35	.31	.28
6.0	.48	.39	.32	.47	.38	.31	.43	.35	.30	.40	.33	.28	.37	.31	.27	.24
7.0	.44	.34	.28	.42	.33	.27	.39	.31	.26	.36	.30	.25	.33	.28	.23	.21
8.0	.40	.31	.25	.38	.30	.24	.36	.28	.23	.33	.27	.22	.31	.25	.21	.19
9.0	.36	.28	.22	.35	.27	.21	.33	.25	.20	.30	.24	.20	.28	.23	.19	.17
10.0	.33	.25	.20	.32	.24	.19	.30	.23	.18	.28	.22	.18	.26	.21	.17	.15



Test System:HOPOO HPG1800  
 Temperature:25.3DEG  
 Operators:  
 Test Date:2025年06月26日

Test Set: 7.0deg/s C-Gamma (TYPE C)  
 Humidity:65.0%  
 Test Distance:6.100 m  
 Remarks:

## WEC AND CCEC

Report number:

MANUFACTURER:															
Address:															
NAME:								TYPE:				WEIGHT:			
SPECIFICATION:				CCT(K): 0				DIMENSION:				SERIAL No.:			

$\rho_{cc}$	80%			70%			50%			30%			10%			0
$\rho_w$	50%	30%	10%	50%	30%	10%	50%	30%	10%	50%	30%	10%	50%	30%	10%	0
$\rho_{fc}$	20%			20%			20%			20%			20%			0
RCR	RCR:Room Cavity Ratio						Wall Exitance Coefficients(WEC)									
0.0																
1.0	.405	.230	.073	.392	.224	.071	.369	.212	.068	.348	.201	.064	.329	.191	.061	
2.0	.346	.190	.058	.335	.185	.057	.314	.175	.054	.295	.166	.052	.278	.157	.049	
3.0	.306	.163	.049	.296	.158	.048	.277	.150	.046	.259	.142	.044	.243	.135	.042	
4.0	.274	.142	.042	.265	.139	.041	.248	.131	.039	.232	.125	.038	.217	.118	.036	
5.0	.248	.126	.037	.240	.123	.036	.224	.117	.034	.210	.111	.033	.197	.105	.032	
6.0	.227	.114	.033	.219	.111	.032	.205	.105	.031	.192	.100	.029	.180	.095	.028	
7.0	.209	.103	.029	.202	.101	.029	.189	.096	.028	.177	.091	.026	.166	.086	.025	
8.0	.193	.094	.027	.187	.092	.026	.175	.088	.025	.164	.083	.024	.154	.079	.023	
9.0	.180	.087	.024	.174	.085	.024	.163	.081	.023	.153	.077	.022	.143	.073	.021	
10.0	.168	.081	.022	.163	.079	.022	.153	.075	.021	.143	.071	.020	.134	.068	.019	

$\rho_{cc}$	80%			70%			50%			30%			10%			0
$\rho_w$	50%	30%	10%	50%	30%	10%	50%	30%	10%	50%	30%	10%	50%	30%	10%	0
$\rho_{fc}$	20%			20%			20%			20%			20%			0
RCR	RCR:Room Cavity Ratio						Ceiling Cavity Exitance Coefficients(CCEC)									
0.0	.315	.315	.315	.269	.269	.269	.184	.184	.184	.106	.106	.106	.034	.034	.034	
1.0	.312	.281	.252	.267	.241	.217	.183	.166	.150	.105	.096	.087	.034	.031	.028	
2.0	.306	.258	.218	.262	.222	.188	.180	.154	.131	.104	.089	.077	.033	.029	.025	
3.0	.298	.242	.196	.256	.208	.170	.176	.145	.119	.101	.085	.070	.033	.027	.023	
4.0	.290	.229	.182	.249	.198	.158	.171	.138	.111	.099	.081	.066	.032	.026	.022	
5.0	.283	.219	.173	.243	.190	.150	.167	.133	.106	.097	.078	.063	.031	.025	.021	
6.0	.275	.211	.166	.236	.183	.144	.163	.128	.102	.095	.075	.061	.031	.025	.020	
7.0	.268	.205	.161	.230	.177	.140	.159	.124	.099	.092	.073	.059	.030	.024	.020	
8.0	.261	.199	.157	.225	.173	.137	.155	.121	.097	.090	.072	.058	.029	.023	.019	
9.0	.255	.194	.154	.219	.169	.134	.152	.119	.095	.088	.070	.057	.029	.023	.019	
10.0	.249	.190	.151	.214	.165	.132	.149	.116	.094	.087	.069	.056	.028	.023	.019	

Test System:HOPOO HPG1800  
 Temperature:25.3DEG  
 Operators:  
 Test Date:2025年06月26日

Test Set: 7.0deg/s C-Gamma (TYPE C)  
 Humidity:65.0%  
 Test Distance:6.100 m  
 Remarks:

## UGR Table

Report number:

MANUFACTURER:										
Address:										
NAME:					TYPE:			WEIGHT:		
SPECIFICATION:		CCT(K): 0			DIMENSION:			SERIAL No.:		
ceiling/cavity	0.7	0.7	0.5	0.5	0.3	0.7	0.7	0.5	0.5	0.3
walls	0.5	0.3	0.5	0.3	0.3	0.5	0.3	0.5	0.3	0.3
working plane	0.2	0.2	0.2	0.2	0.2	0.2	0.2	0.2	0.2	0.2
Room dimensions	Viewed crosswise					Viewed endwise				
x = 2H y = 2H	6.7	8.1	7.2	8.6	9.1	8.1	9.6	8.6	10.0	10.6
3H	8.4	9.7	8.9	10.2	10.8	10.8	12.1	11.3	12.6	13.2
4H	9.2	10.4	9.7	11.0	11.6	12.2	13.5	12.8	14.0	14.6
6H	9.8	11.0	10.4	11.6	12.2	13.8	15.0	14.4	15.6	16.2
8H	10.1	11.2	10.6	11.8	12.4	14.7	15.9	15.3	16.5	17.1
12H	10.3	11.4	10.9	12.0	12.6	15.8	16.9	16.4	17.5	18.1
4H 2H	7.6	8.8	8.1	9.4	10.0	8.7	10.0	9.2	10.5	11.1
3H	9.5	10.6	10.1	11.2	11.8	11.6	12.7	12.2	13.3	14.0
4H	10.4	11.4	11.0	12.0	12.7	13.3	14.3	13.9	14.9	15.6
6H	11.2	12.1	11.9	12.8	13.5	15.1	16.0	15.8	16.7	17.4
8H	11.6	12.4	12.2	13.1	13.8	16.1	17.0	16.8	17.6	18.4
12H	11.9	12.7	12.5	13.3	14.1	17.3	18.1	18.0	18.8	19.5
8H 4H	11.3	12.2	11.9	12.8	13.5	13.7	14.5	14.3	15.2	15.9
6H	12.4	13.1	13.1	13.8	14.6	15.8	16.6	16.5	17.2	18.0
8H	12.9	13.5	13.6	14.2	15.0	17.1	17.7	17.8	18.4	19.2
12H	13.4	14.0	14.1	14.7	15.5	18.6	19.1	19.3	19.8	20.7
12H 4H	11.6	12.4	12.3	13.1	13.8	13.7	14.5	14.3	15.1	15.9
6H	12.9	13.6	13.6	14.2	15.0	15.9	16.6	16.6	17.3	18.1
8H	13.5	14.1	14.3	14.8	15.6	17.3	17.9	18.0	18.6	19.4
Variations with the observer position at spacings:										
S = 1.0H	+ 0.1 / - 0.1					+ 0.1 / - 0.1				
1.5H	+ 0.1 / - 0.2					+ 0.2 / - 0.3				
2.0H	+ 0.1 / - 0.3					+ 0.2 / - 0.4				

CIE Pub.117 Corrected 156.6 lm Total Lamp Luminous Flux. (8log(F/F0) = -6.4)

Test System:HOPOO HPG1800  
 Temperature:25.3DEG  
 Operators:  
 Test Date:2025年06月26日

Test Set: 7.0deg/s C-Gamma (TYPE C)  
 Humidity:65.0%  
 Test Distance:6.100 m  
 Remarks:

## UTILIZATION FACTORS TABLE

Report number:

MANUFACTURER:					
Address:					
NAME:		TYPE:		WEIGHT:	
SPECIFICATION:	CCT(K): 0	DIMENSION:		SERIAL No.:	

REFLECTANCE										
Ceiling	0.8	0.8	0.8	0.7	0.7	0.7	0.5	0.5	0.5	0
Walls	0.7	0.5	0.3	0.7	0.5	0.3	0.7	0.5	0.3	0
Working plane	0.2	0.2	0.2	0.2	0.2	0.2	0.2	0.2	0.2	0
ROOM INDEX	UTILIZATION FACTORS(PERCENT) $k(RI) \times RCR = 5$									
$k = 0.60$	47	34	27	46	34	27	44	33	26	20
0.80	56	43	35	55	42	34	52	41	34	26
1.00	64	51	42	62	50	41	59	50	40	32
1.25	71	58	49	68	56	48	64	54	47	37
1.50	76	63	54	73	62	53	69	59	52	41
2.00	83	72	63	80	70	62	75	66	59	48
2.50	88	77	69	85	75	67	78	71	64	52
3.00	92	82	74	88	79	72	82	75	69	56
4.00	96	88	81	93	85	79	86	80	75	61
5.00	100	92	86	96	89	84	88	83	79	64
ROOM INDEX	UF(total)									Direct
According to DIN EN 13032-2 2004				Suspended				SHRNOM = 1.25		

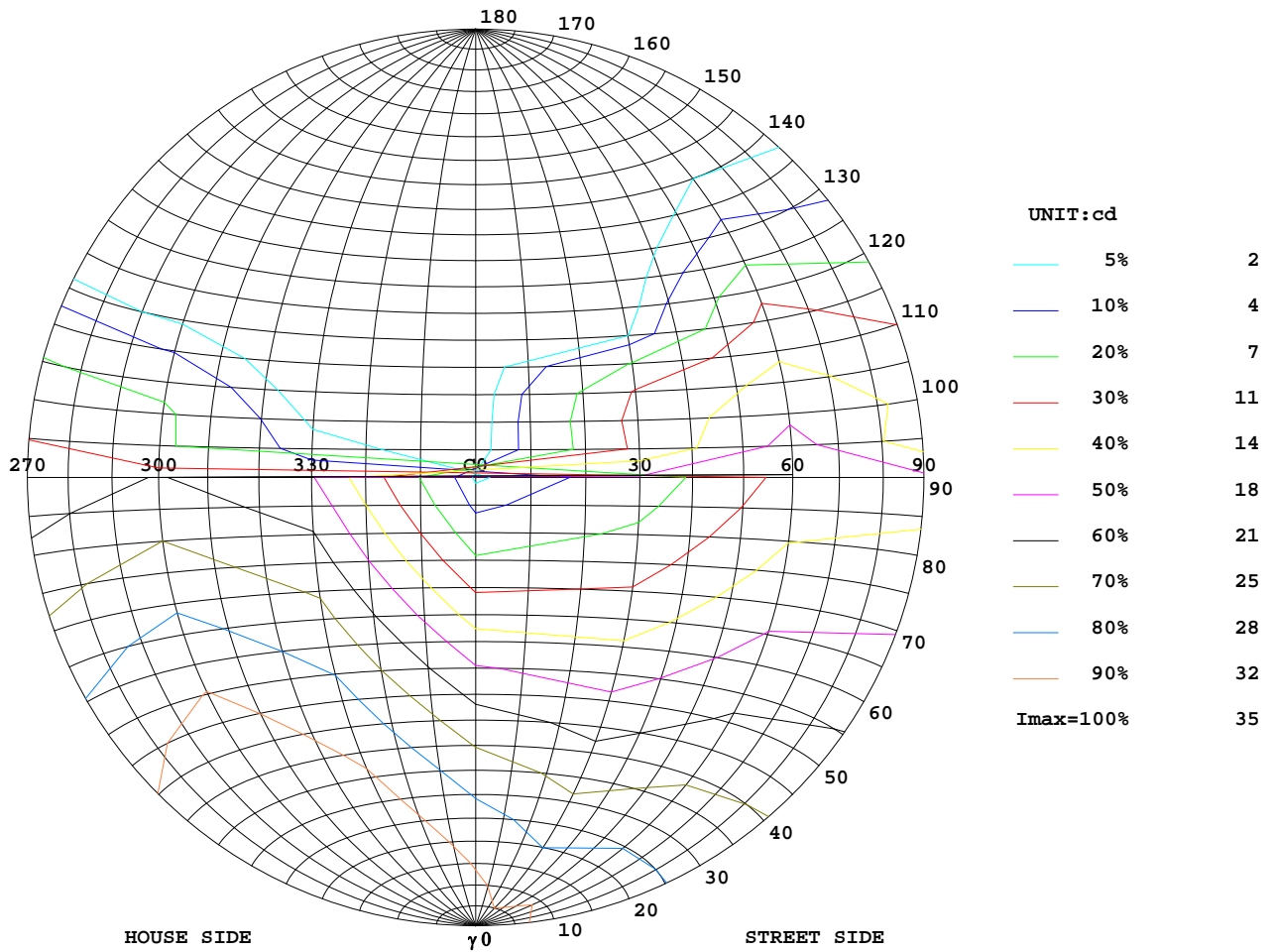
Test System:HOPOO HPG1800  
 Temperature:25.3DEG  
 Operators:  
 Test Date:2025年06月26日

Test Set: 7.0deg/s C-Gamma (TYPE C)  
 Humidity:65.0%  
 Test Distance:6.100 m  
 Remarks:

# ISOCANDELA DIAGRAM

Report number:

MANUFACTURER:			
Address:			
NAME:		TYPE:	WEIGHT:
SPECIFICATION:	CCT(K): 0	DIMENSION:	SERIAL No.:



Test System:HOPOO HPG1800  
 Temperature:25.3DEG  
 Operators:  
 Test Date:2025年06月26日

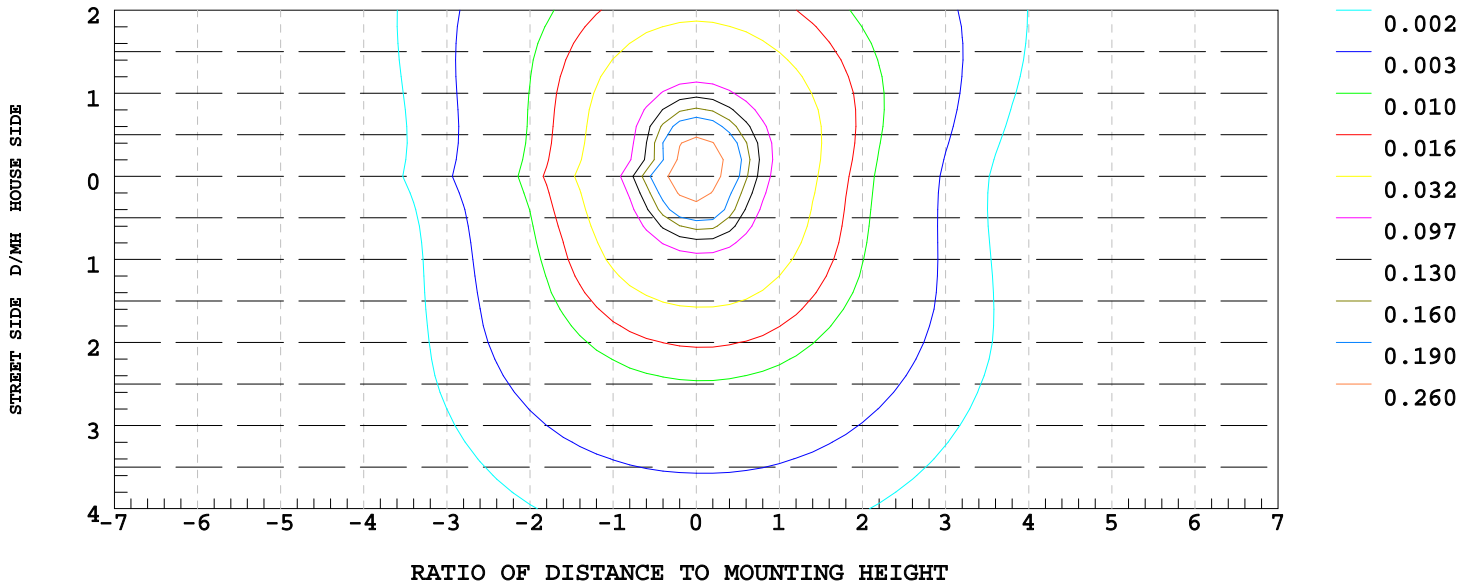
Test Set: 7.0deg/s C-Gamma (TYPE C)  
 Humidity:65.0%  
 Test Distance:6.100 m  
 Remarks:

# ISOLUX DIAGRAM

Report number:

MANUFACTURER:			
Address:			
NAME:		TYPE:	WEIGHT:
SPECIFICATION:	CCT(K): 0	DIMENSION:	SERIAL No.:

ILLUMINANCE AT MH=10 m, Enadir = 0.32 lx



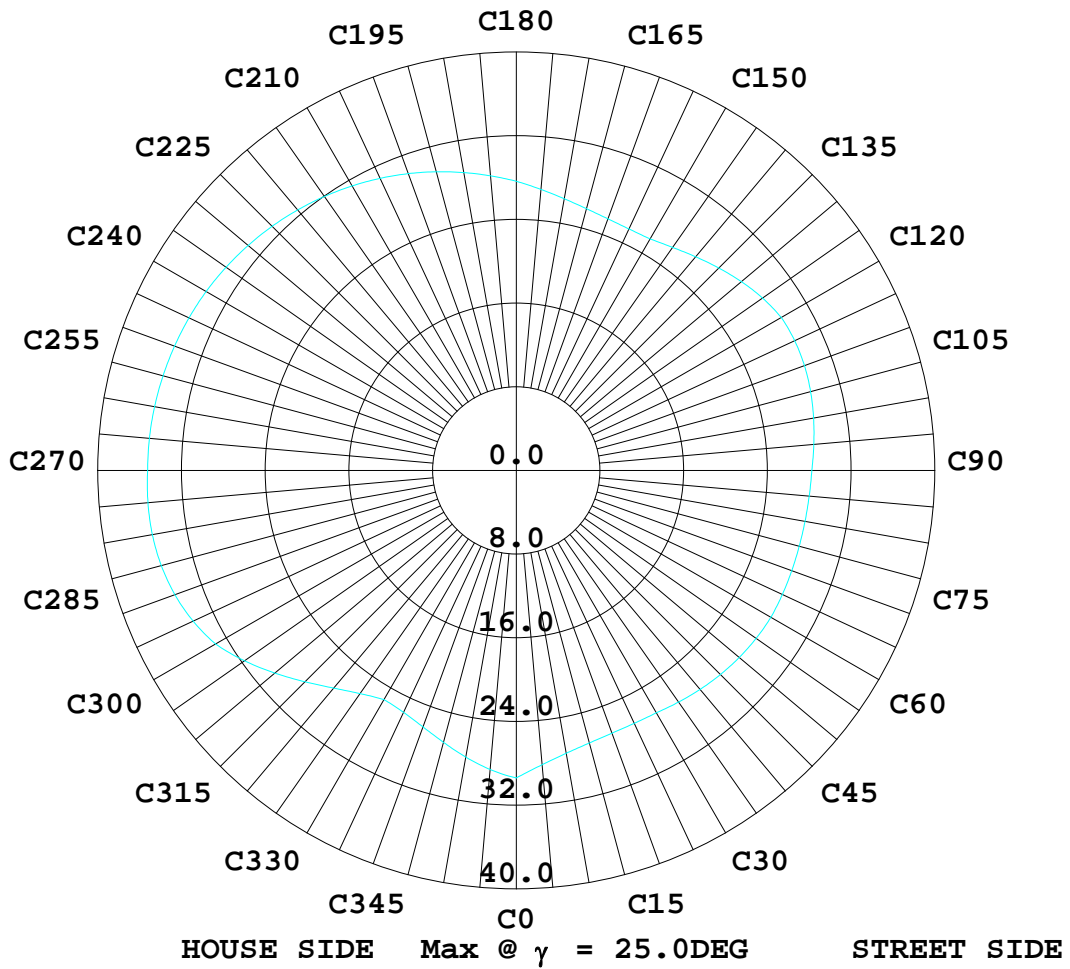
Test System:HOPOO HPG1800  
 Temperature:25.3DEG  
 Operators:  
 Test Date:2025年06月26日

Test Set: 7.0deg/s C-Gamma (TYPE C)  
 Humidity:65.0%  
 Test Distance:6.100 m  
 Remarks:

# ISOCANDELA DIAGRAM

Report number:

MANUFACTURER:			
Address:			
NAME:		TYPE:	WEIGHT:
SPECIFICATION:	CCT(K): 0	DIMENSION:	SERIAL No.:



Test System: HOPOO HPG1800  
 Temperature: 25.3DEG  
 Operators:  
 Test Date: 2025年06月26日

Test Set: 7.0deg/s C-Gamma (TYPE C)  
 Humidity: 65.0%  
 Test Distance: 6.100 m  
 Remarks:

## LUMINOUS DISTRIBUTION INTENSITY DATA

Report number:

<b>MANUFACTURER:</b>			
<b>Address:</b>			
<b>NAME:</b>		<b>TYPE:</b>	<b>WEIGHT:</b>
<b>SPECIFICATION:</b>	<b>CCT(K): 0</b>	<b>DIMENSION:</b>	<b>SERIAL No.:</b>

UNIT: cd

$\gamma$ (DEG)	C (DEG)											
	0	30	60	90	120	150	180	210	240	270	300	330
0.0	32.3	32.3	33.0	32.8	33.1	27.5	32.3	32.3	33.0	32.8	33.1	27.5
5.0	32.5	31.7	32.3	32.0	32.5	27.4	31.6	32.7	33.6	33.6	33.5	27.4
10.0	32.1	30.7	31.4	31.1	31.8	27.2	30.8	32.7	34.0	34.2	33.7	27.1
15.0	31.5	29.5	30.4	30.2	31.1	26.8	29.9	32.4	34.3	34.7	33.7	26.7
20.0	30.5	28.1	29.2	29.2	30.2	26.2	28.8	31.9	34.4	35.0	33.5	26.0
25.0	29.3	26.7	28.0	28.2	29.2	25.5	27.6	31.4	34.2	35.2	33.1	25.3
30.0	27.9	25.1	26.7	27.1	28.1	24.6	26.3	30.6	33.8	35.2	32.6	24.4
35.0	26.3	23.5	25.5	26.0	26.9	23.7	24.9	29.8	33.2	34.9	32.0	23.4
40.0	24.5	21.9	24.2	24.8	25.7	22.5	23.4	28.9	32.5	34.4	31.2	22.4
45.0	22.5	20.2	22.9	23.7	24.4	21.3	21.9	27.9	31.7	33.7	30.2	21.2
50.0	20.2	18.2	21.5	22.4	23.1	19.9	20.1	26.7	30.7	32.8	29.2	20.0
55.0	17.8	16.3	20.2	21.2	21.8	18.4	17.8	25.1	29.5	31.8	28.1	18.7
60.0	15.3	14.5	19.0	20.0	20.4	17.0	15.2	23.4	28.3	30.5	26.9	17.3
65.0	12.6	12.6	17.7	18.7	19.0	15.4	12.6	21.5	26.9	29.2	25.6	15.8
70.0	10.0	10.8	16.5	17.4	17.7	13.9	10.0	19.6	25.3	27.7	24.3	14.3
75.0	7.44	9.15	15.2	16.1	16.3	12.4	7.36	17.6	23.6	26.2	22.8	12.8
80.0	5.06	7.62	14.0	14.9	15.0	11.0	4.91	15.5	21.9	24.6	21.3	11.4
85.0	2.90	6.25	12.8	13.6	13.8	9.86	2.82	13.6	20.1	23.0	19.7	10.0
90.0	1.45	5.09	11.7	12.5	12.8	8.93	1.22	11.7	18.3	21.3	17.8	8.70
95.0	0.78	2.49	7.62	10.4	9.41	7.77	0.41	9.67	11.8	18.8	11.3	5.50
100.0	0.67	1.41	7.62	8.55	9.07	7.36	0.15	7.06	13.1	16.9	11.6	1.26
105.0	0.60	0.37	6.02	7.29	8.63	6.92	0.19	6.66	11.9	15.2	10.8	1.04
110.0	0.56	0.15	3.38	4.80	7.62	6.69	0.19	5.06	10.5	13.4	7.18	1.71
115.0	0.52	0.15	1.52	2.23	6.51	6.73	0.19	3.46	8.93	11.6	1.71	2.19
120.0	0.48	0.15	0.82	0.37	5.46	6.84	0.19	2.53	6.40	9.71	0.71	2.60
125.0	0.45	0.15	0.71	0.19	4.53	6.84	0.19	1.89	4.35	6.58	0.37	2.90
130.0	0.41	0.15	0.63	0.15	3.75	6.66	0.19	1.48	3.05	4.24	0.22	3.34
135.0	0.37	0.15	0.60	0.19	3.27	6.51	0.22	1.19	2.08	2.67	0.19	3.86
140.0	0.37	0.15	0.52	0.19	2.93	6.43	0.22	0.93	1.41	1.74	0.15	4.24
145.0	0.37	0.15	0.48	0.19	2.64	6.36	0.22	0.74	0.93	1.11	0.19	4.39
150.0	0.33	0.15	0.45	0.19	2.41	6.47	0.22	0.63	0.60	0.82	0.19	4.72
155.0	0.33	0.15	0.45	0.19	2.23	6.58	0.22	0.56	0.41	0.67	0.19	5.28
160.0	0.33	0.15	0.41	0.19	2.00	6.66	0.22	0.48	0.30	0.60	0.19	5.58
165.0	0.30	0.15	0.37	0.19	1.63	6.54	0.22	0.41	0.22	0.56	0.19	5.87
170.0	0.30	0.15	0.37	0.19	1.04	6.66	0.22	0.37	0.19	0.52	0.19	7.14
175.0	0.30	0.15	0.33	0.19	0.56	6.66	0.26	0.37	0.19	0.48	0.19	8.07
180.0	0.26	0.19	0.33	0.22	0.41	2.41	0.30	0.33	0.19	0.41	0.22	8.48

**Test System:**HOPOO HPG1800  
**Temperature:**25.3DEG  
**Operators:**  
**Test Date:**2025年06月26日

**Test Set:** 7.0deg/s C-Gamma (TYPE C)  
**Humidity:**65.0%  
**Test Distance:**6.100 m  
**Remarks:**